



**Part Number :** [1731071275](#)

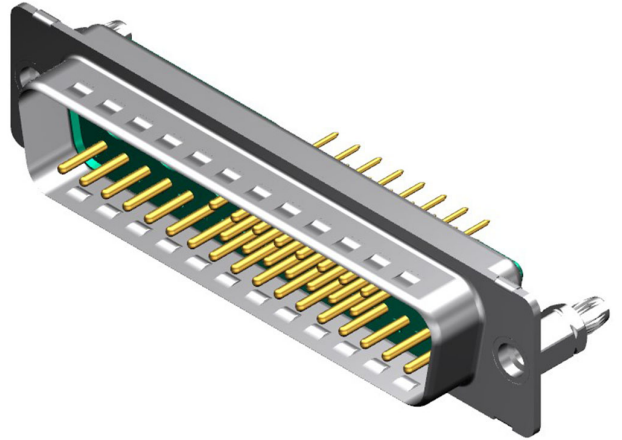
**Product Description :** FCT Mixed Layout D-Sub Connector, Male, Straight, PCB Through Hole, Gold Plating, Tin-plated Shell with Dimples, 6.60mm Snap-in Bolt, 2.40mm PCB Thickness, 36 Circuits Max, 32 Signal Contacts Loaded, Green Insulator

**Series Number :** 173107

**Status :** Active

**Product Category :** D-Sub Connectors

**Engineering Number :** FM36W4P1-1211



---

## Documents & Resources


### Drawings

[1731071275\\_sd.pdf](#)

---

## Product Environment Compliance

### Compliance

|                    |                                                                                       |
|--------------------|---------------------------------------------------------------------------------------|
| GADSL/IMDS         | Not Relevant                                                                          |
| China RoHS         |  |
| EU ELV             | Not Relevant                                                                          |
| Low-Halogen Status | Not Reviewed per IEC 61249-2-21                                                       |
| REACH SVHC         | Not Reviewed per D(2024)6225-DC (07 Nov 2024)                                         |
| EU RoHS            | Compliant with Exemption 6(c) per EU 2015/863                                         |

### Multiple Part Product Compliance Statements

- Eu RoHS
- REACH SVHC
- Low-Halogen

### Multiple Part Industry Compliance Documents

- IPC 1752A Class C
- IPC 1752A Class D
- Molex Product Compliance Declaration
- IEC-62474

## Part Details

### General

|              |                                                                                                                                                                                                                     |
|--------------|---------------------------------------------------------------------------------------------------------------------------------------------------------------------------------------------------------------------|
| Status       | Active                                                                                                                                                                                                              |
| Category     | D-Sub Connectors                                                                                                                                                                                                    |
| Series       | 173107                                                                                                                                                                                                              |
| Description  | FCT Mixed Layout D-Sub Connector, Male, Straight, PCB Through Hole, Gold Plating, Tinned Shell with Dimples, 6.60mm Snap-in Bolt, 2.40mm PCB Thickness, 36 Circuits Max, 32 Signal Contacts Loaded, Green Insulator |
| IP Rating    | IP20                                                                                                                                                                                                                |
| Magnetic     | Yes                                                                                                                                                                                                                 |
| Product Name | FCT Products                                                                                                                                                                                                        |
| Type         | Mixed Layout                                                                                                                                                                                                        |
| UPC          | 191130132133                                                                                                                                                                                                        |

### Electrical

|                               |      |
|-------------------------------|------|
| Current - Maximum per Contact | 7.5A |
| Shielded                      | Yes  |

### Physical

|                                |              |
|--------------------------------|--------------|
| Circuits (Loaded)              | 32           |
| Circuits (maximum)             | 36           |
| Color - Resin                  | Green        |
| Durability (mating cycles max) | 500          |
| Gender                         | Male         |
| Material - Contact             | Copper Alloy |
| Material - Resin               | PBT          |
| Material - Shell               | Steel        |
| Net Weight                     | 16.200/g     |
| Number of Rows                 | 3            |

|                               |                  |
|-------------------------------|------------------|
| Orientation                   | Straight         |
| Packaging Type                | Carton           |
| Panel Mount                   | Rear             |
| Panel Mount Method            | Thread-In        |
| PC Tail Length                | 10.30mm          |
| PCB Locator                   | Yes              |
| PCB Retention                 | Yes              |
| PCB Thickness - Recommended   | 1.60mm           |
| Plating - Contact             | Gold over Nickel |
| Plating min - Mating          | 0.800µm          |
| Plating - Shell               | Tin              |
| Polarized to Mating Part      | Yes              |
| Polarized to PCB              | Yes              |
| Ports                         | 1                |
| Temperature Range - Operating | -55° to +130°C   |
| Termination Style             | Through Hole     |
| Waterproof / Dustproof        | No               |
| Waterproof / Dustproof Type   | IP20             |

---

## Mates With / Use With

### Mates with Part(s)

| Description | Part Number                                  |
|-------------|----------------------------------------------|
| Mates With  | FCT Mixed Layout D-Sub, Size 5, 36W4, Socket |

### Use with Part(s)

| Description | Part Number                                                  |
|-------------|--------------------------------------------------------------|
| Use With    | FCT Coaxial, High Power, High Voltage, or Pneumatic Contacts |