

# PRODUCT INFORMATION PACKET



Model No: 098010.00  
Catalog No: 098010.00  
0.75 HP SCR Motor, 2500 RPM, 180 V, 56C Frame, TEFC  
SCR Motors



Regal and Leeson are trademarks of Regal Beloit Corporation or one of its affiliated companies.  
©2020 Regal Beloit Corporation, All Rights Reserved. MC017097E





**Nameplate Specifications**

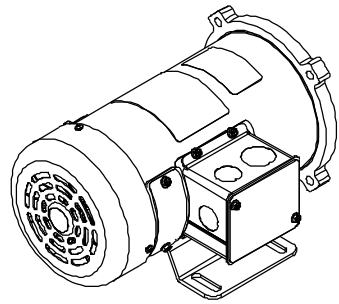
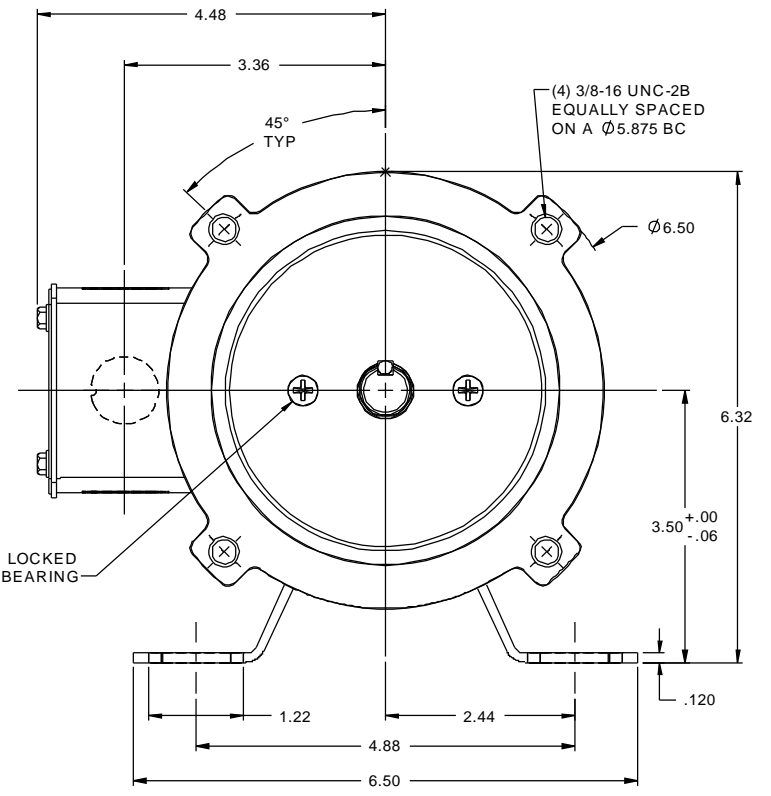
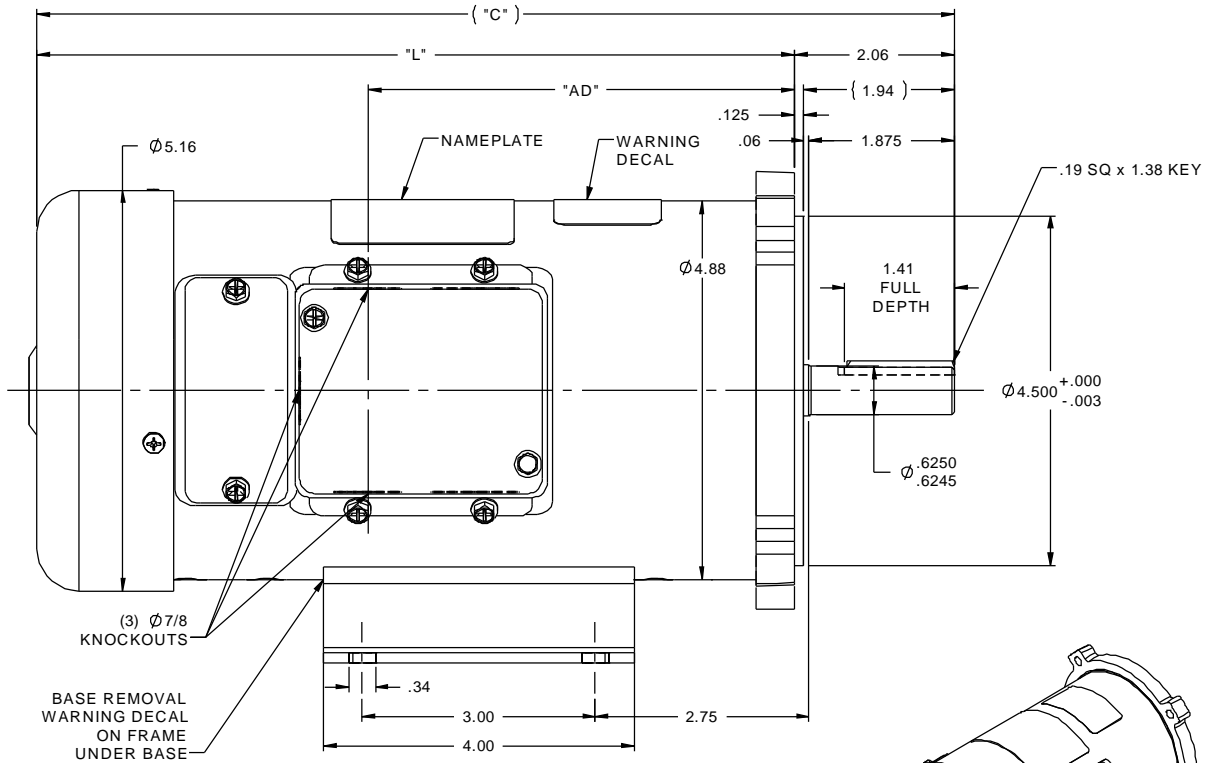
Output HP	0.75 Hp	Output KW	0.56 kW
Voltage	180 V	Current	3.8 A
Speed	2500 rpm	Service Factor	1
Efficiency	72.1 %	Duty	Continuous
Insulation Class	F	Frame	NSS56C
Enclosure	Totally Enclosed Fan Cooled	Thermal Protection	No
Ambient Temperature	40 °C	Drive End Bearing Size	6203
Opp Drive End Bearing Size	6203	UL	Recognized
CSA	Y	CE	N

**Technical Specifications**

Rotation	Reversible	Mounting	Rigid C base
Overall Length	11.81 in	Frame Length	7.50 in
Shaft Diameter	0.625 in	Shaft Extension	2.06 in
Connection Drawing	00531901	Outline Drawing	027620-098010

This is an uncontrolled document once printed or downloaded and is subject to change without notice. Date Created:30/12/2020

RBC PROPRIETARY AND CONFIDENTIAL INFORMATION  
 This document is the property of REGAL BELOIT CORPORATION ("RBC") including its subsidiaries and divisions and contains proprietary information of RBC. This document is loaned on the express condition that neither it nor the information contained therein shall be disclosed to others without the express written consent of RBC, and that the information shall be used by the recipient only as approved expressly by RBC. This document shall be returned to RBC upon its request. This document may be subject to certain restrictions under U.S. export control laws and regulations.

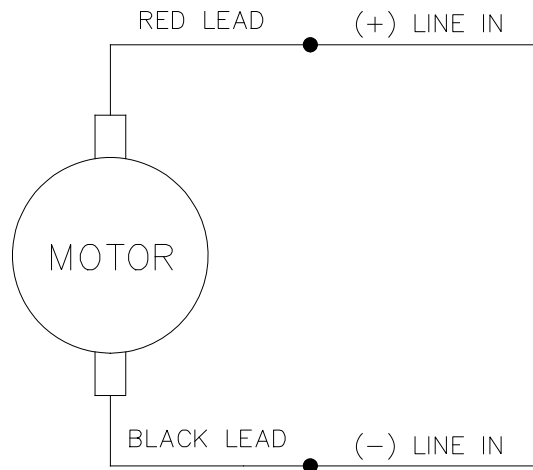


- NOTES:  
 1) MAXIMUM FACE RUNOUT .004 T.I.R.  
 2) MAXIMUM PILOT ECCENTRICITY .004 T.I.R.  
 3) PERMISSIBLE SHAFT RUNOUT .002 T.I.R.  
 4) GASKETS THROUGHOUT.


098382.00	10.81	8.75	4.49	48	1/2	1800
098381.00	10.81	8.75	4.49	36	1/2	1800
098069.00	13.81	11.75	7.49	180	3/4	1750
098032.00	13.81	11.75	7.49	90	3/4	1750
098010.00	11.81	9.75	5.49	180	3/4	2500
098009.00	11.81	9.75	5.49	90	3/4	2500
098008.00	11.81	9.75	5.49	180	1/2	1750
098007.00	10.81	8.75	4.49	180	1/2	2500
098006.00	10.81	8.75	4.49	90	1/2	2500
098005.00	11.31	9.25	4.99	180	1/3	1750
098004.00	11.31	9.25	4.99	90	1/3	1750
098003.00	11.31	9.25	4.99	180	1/4	1750
098002.00	10.81	8.75	4.49	90	1/4	1750
098000.00	11.81	9.75	5.49	90	1/2	1750
CATALOG No.	"C"	"L"	"AD"	VOLTS	H.P.	RPM

		TOLERANCES UNLESS SPECIFIED		DRAWN JRA 5/11/95	
		DEC INCHES		CHK	
		X ±.1		APPR	
08	REDRAWN IN SOLIDWORKS, MODIFIED TABLE PER NEW STANDARD	IPG 9/8/2011	XX ±.03	TITLE OUTLINE	SCALE 5:8
			XXX ±.005	42 FRAME DC - SS56C MOUNT	REF RDOUT42DC8
07	ADDED FAN GUARD HOLE PLUG, ISAAC 10-4174	IPG 10/11/10	XXXX ±.0005	MATL	FMF C42D17FK1
NO	REVISION	BY & DATE	CHK LANG ±1/2°	FINISH	PAGE OF
THIRD ANGLE PROJECTION		RFP	PREV	SIZE	DRAWING NO
		NETWORK FILE NAME 027620		B	027620
				REV	08

005319.01



CONNECTIONS SHOWN FOR CCW ROTATION FACING LEAD END OF THE MOTOR  
 TO REVERSE ROTATION INTERCHANGE LINE LEADS

				TOLERANCES UNLESS SPECIFIED		 ELECTRIC MOTORS GEARMOTORS AND DRIVES	DRAWN TJF 11/15/97				
				DEC.	INCHES		CHK				
				.X	±.1		APPD POW 11/15/97				
E	"MOTOR" WAS "ARMATURE", ECO-0163602	IPG	3/14/19	.XX	±.01	TITLE	EXTERNAL WIRING DIAGRAM		SCALE	1=2	
D	UPDATED TO MAKE IT GENERIC, ECO-0163547	IPG	3/13/19	.XXX	±.005		PMDc MOTOR		REF		
01	REDRAWN ON CAD. REVISED NOTES.	SJB	9/20/2005	.XXXX	±.0005	MAT'L.			FMF		
NO.	REVISION	BY & DATE	CHK	ANG	±1/2'	FINISH			PREV		
THIS DRAWING IN DESIGN AND DETAIL IS OUR PROPERTY AND MUST NOT BE USED EXCEPT IN CONNECTION WITH OUR WORK ALL RIGHTS OF DESIGN AND INVENTION ARE RESERVED THIS IS AN ELECTRONICALLY GENERATED DOCUMENT – DO NOT SCALE THIS PRINT				RFP	CAD FILE		00531901	SIZE	DRAWING NO.		REV.
				DIST			A	005319.01		E	

# LEESON ELECTRIC CORPORATION

## TYPICAL PERFORMANCE CURVE FOR DIRECT CURRENT PERMANENT MAGNET MOTOR

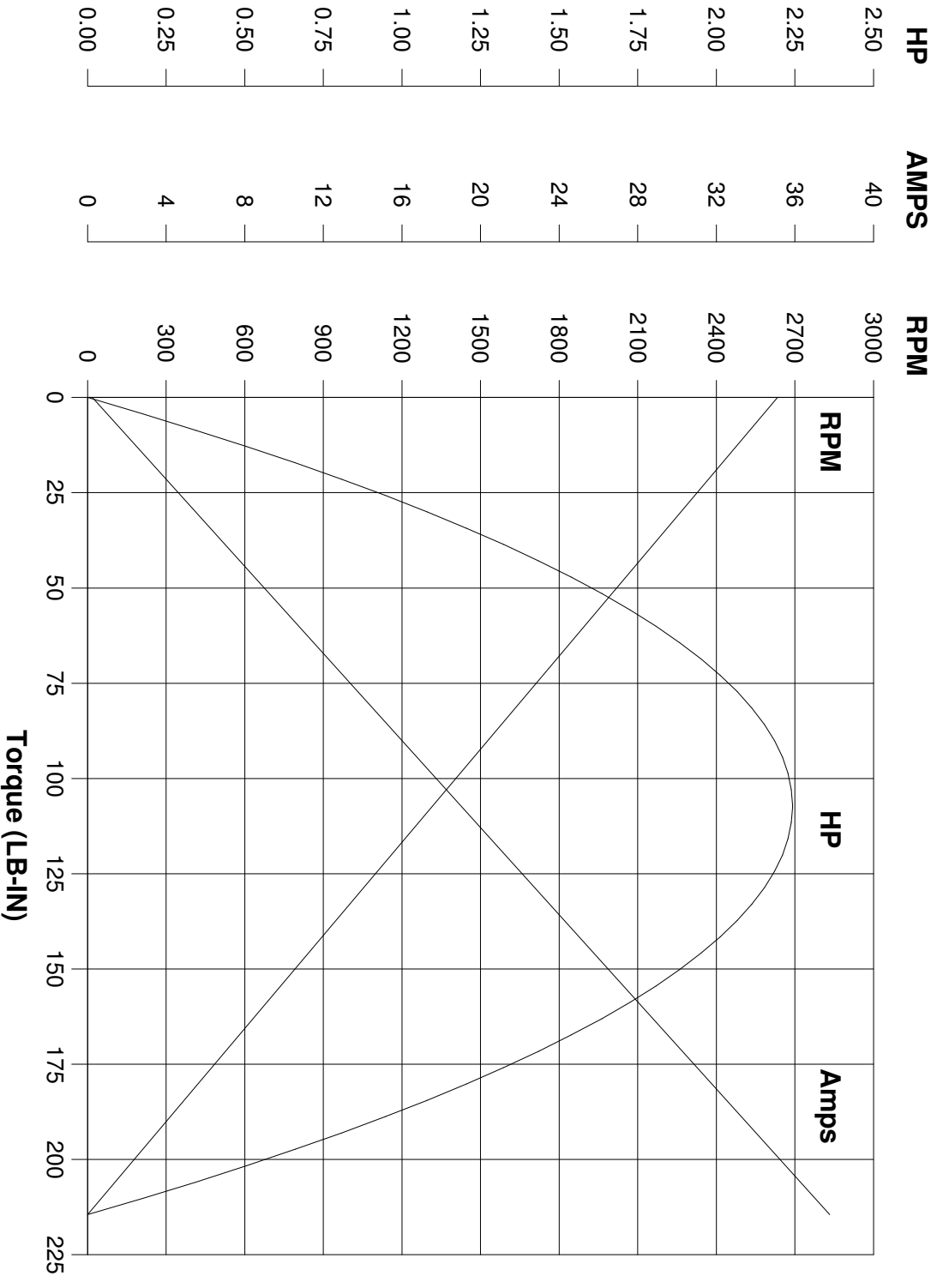
Model No. C42D28FK4

Catalog No. 098010.00

HP 0.750 RPM 2500 DC Volts 180.0 N.P. FLA 3.80

F.F. 1.38 Encl TEFC Type DF S.F. 1.00

Max. Amb. 40.0 Deg C Insul. F Frame NSS56C Duty CONT



Ra 2.3440 Ohms  
 La 27.50 mHenrys  
 Ja 7.813 LB-IN<sup>1/2</sup>  
 Ke 69.11 V/KRPM

Kt 5.842 LB-IN/AMP  
 I<sub>max</sub> 39.9 AMPS Allowed  
 FL Torque 18.90 LB-IN  
 FL EFF 72.00 %

Winding W- D4725-1 Prepared by V. Boehlen Date 04-29-2005