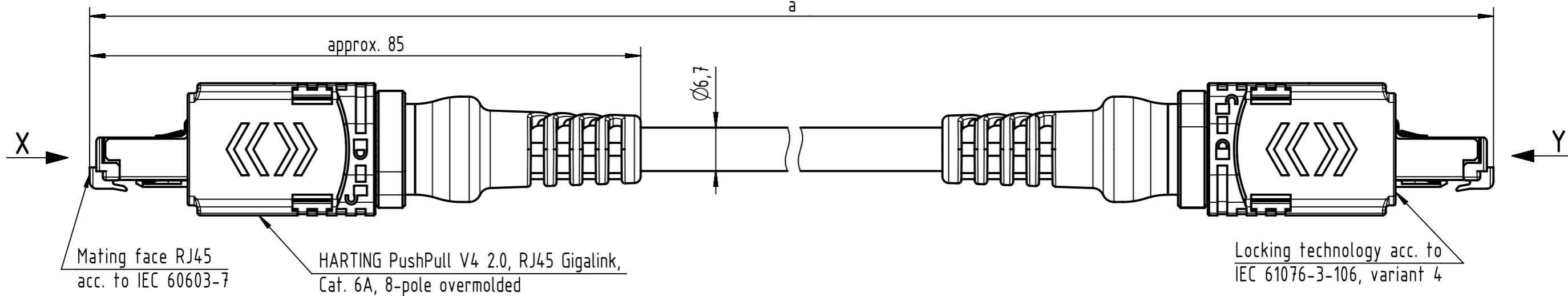


Connector Location A

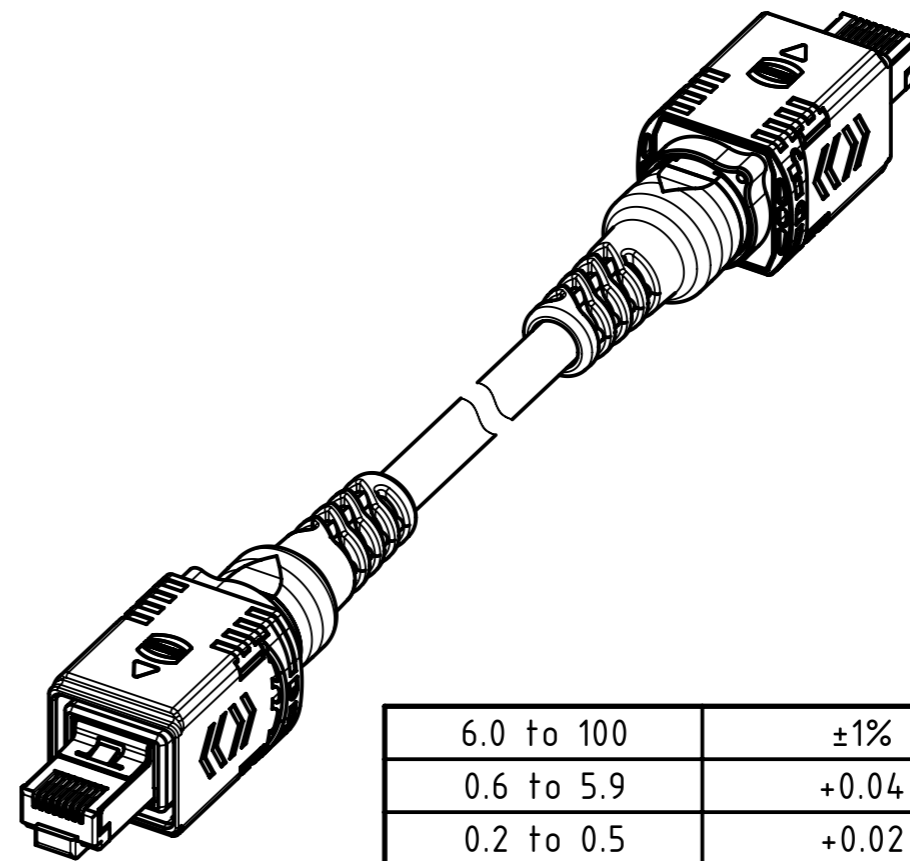
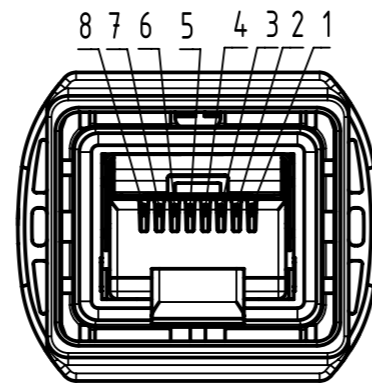
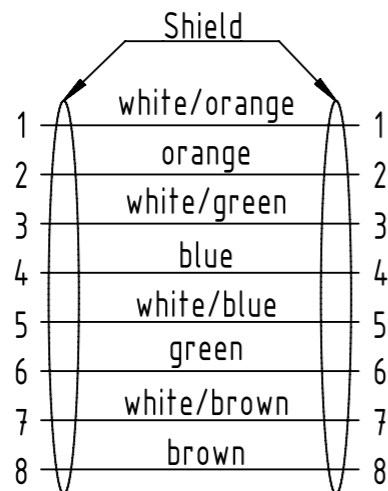
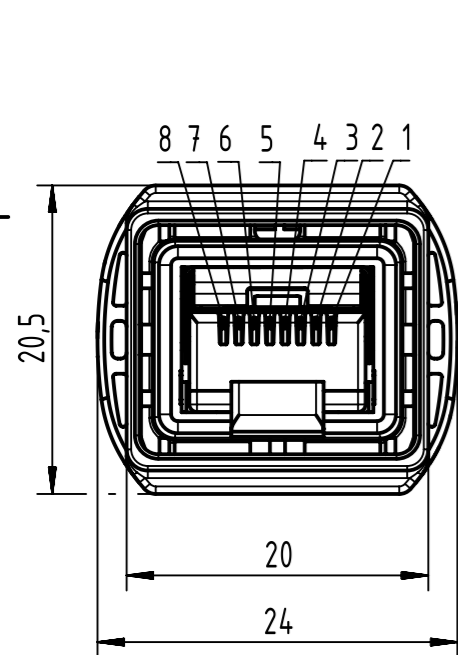
Connector Location B



X
male

Loading Plan
acc. to TIA/EIA 568B

Y
male



6.0 to 100	±1%
0.6 to 5.9	+0.04
0.2 to 0.5	+0.02
a [m]	Tolerance

length in "1m" step	100	XXX=000
	99	XXX=990
	.	.
	12	XXX=120
length in "0.1m" step	11	XXX=110
	10	XXX=100
	9.9	XXX=099
	9.8	XXX=098
	.	.
	0.5	XXX=005
	0.4	XXX=004
	0.3	XXX=003
	0.2	XXX=002
Step	a [m]	XXX

RJ45 Ethernet Stranded Cable, 4x2xAWG 26/7, PUR, Cat. 6A, yellow	09482828756XXX
Type of cable	Part no.

NOTE:

- * Ethernet transmission possible for lengths up to 45m
- Protection level: IP65/67
- Temperature range:
 - Fixed installation: -40°C ... +80°C
 - Dynamic installation: -40°C ... +80°C

	All rights reserved	Created by COSTEA Costea	Inspected by 402676 Gross	Standardisation MUNTEANV Muntean	Date 2020-05-11	State Final Release
	Department HCS - RO	Title HA PPV4 2.0 RJ45 Cat6A PUR		Doc-Key / ECM-Nr. 100696412/UGD/001/E 500000173178		Rev. E
HARTING Customised Solutions D-32339 Espelkamp		Type TB	Number 09482828756XXX		Page 1/1	