

## Han HP Base Panel

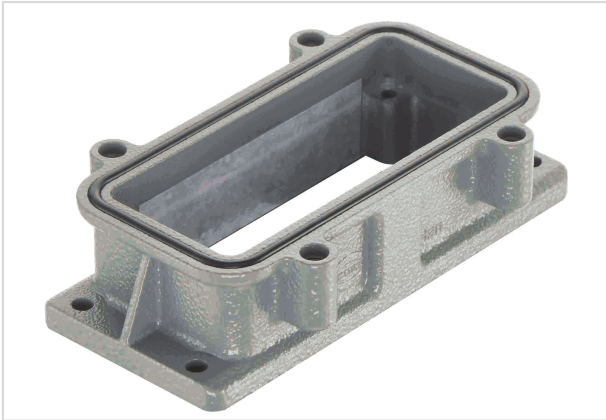


Image is for illustration purposes only. Please refer to product description.

Part number	09 39 016 0310
Specification	Han HP Base Panel
HARTING eCatalogue	<a href="https://b2b.harting.com/09390160310">https://b2b.harting.com/09390160310</a>

### Identification

Category	Hoods/Housings
Series of hoods/housings	Han <sup>®</sup> HP
Type of hood/housing	Bulkhead mounted housing

### Version

Locking type	Screw locking
Size	16 B
Field of application	Hoods/housings for rough environments

### Technical characteristics

Tightening torque (screw locking)	3 Nm
Limiting temperature	-40 ... +125 °C
Degree of protection acc. to IEC 60529	IP66 IP68 IP69 / IPX9K acc. to ISO 20653

### Material properties

Material (hood/housing)	Aluminium die-cast
Surface (hood/housing)	Powder-coated
Colour (hood/housing)	RAL 7037 (dust grey)
Material (seal)	NBR
RoHS	compliant
ELV status	compliant
China RoHS	e



Pushing Performance

## Material properties

REACH Annex XVII substances	No
REACH ANNEX XIV substances	No
REACH SVHC substances	No

## Specifications and approvals

Specifications	EN 60664-1 IEC 61984
----------------	-------------------------

## Commercial data

Packaging size	1
Net weight	127 g
Country of origin	Germany
European customs tariff number	85389099
eCl@ss	27440202 Shell for industrial connectors