

## Han 3A female insert Quick-Lock 1,5mm<sup>2</sup>

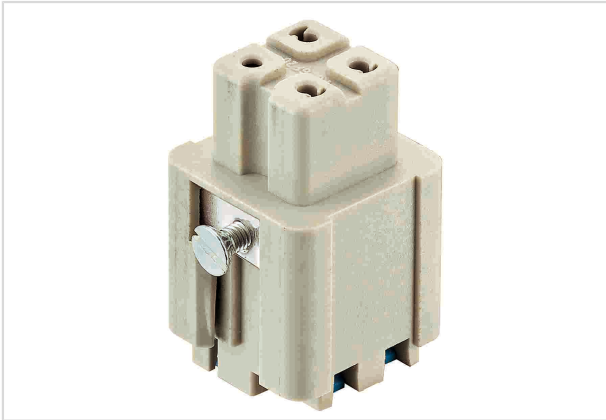


Image is for illustration purposes only. Please refer to product description.

Part number	09 20 003 2734
Specification	Han 3A female insert Quick-Lock 1,5mm <sup>2</sup>
HARTING eCatalogue	<a href="https://b2b.harting.com/09200032734">https://b2b.harting.com/09200032734</a>

### Identification

Category	Inserts
Series	Han A <sup>®</sup>

### Version

Termination method	Han-Quick Lock <sup>®</sup> termination
Gender	Female
Size	3 A
Number of contacts	3
PE contact	Yes
Details	Black slide

### Technical characteristics

Conductor cross-section	0.25 ... 1.5 mm <sup>2</sup>
Rated current	10 A
Rated voltage conductor-earth	230 V
Rated voltage conductor-conductor	400 V
Rated impulse voltage	4 kV
Pollution degree	3
Rated voltage acc. to UL	600 V
Insulation resistance	>10 <sup>10</sup> Ω
Limiting temperature	-40 ... +125 °C
Mating cycles	≥500



Pushing Performance

## Material properties

Material (insert)	Polycarbonate (PC)
Colour (insert)	RAL 7032 (pebble grey)
Material (contacts)	Copper alloy
Surface (contacts)	Silver plated
Material flammability class acc. to UL 94	V-0
RoHS	compliant with exemption
RoHS exemptions	6(c): Copper alloy containing up to 4 % lead by weight
ELV status	compliant with exemption
China RoHS	50
REACH Annex XVII substances	No
REACH ANNEX XIV substances	No
REACH SVHC substances	Yes
REACH SVHC substances	Lead
ECHA SCIP number	564b7d75-7bf6-4cfb-acb1-2168eb61b675

## Specifications and approvals

Specifications	EN 60664-1 IEC 61984
Approvals	DNV GL
UL / CSA	UL 1977 ECBT2.E235076 CSA-C22.2 No. 182.3 ECBT8.E235076

## Commercial data

Packaging size	10
Net weight	14.85 g
Country of origin	Germany
European customs tariff number	85366990
eCl@ss	27440205 Contact insert for industrial connectors