

## Han 6Mod Docking Frame Moveable, Set

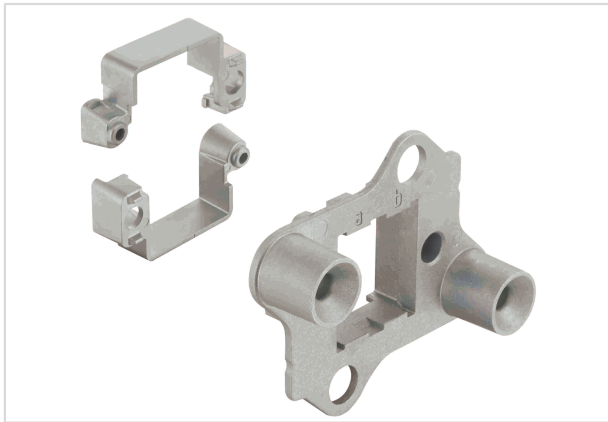


Image is for illustration purposes only. Please refer to product description.

|                    |   |
|--------------------|---|
| Part number        | 09 14 006 1706  |
| Specification      | Han 6Mod Docking Frame Moveable, Set  |
| HARTING eCatalogue | <a href="https://b2b.harting.com/09140061706">https://b2b.harting.com/09140061706</a> |

### Identification

|                              |   |
|------------------------------|---|
| Category                     | Accessories                             |
| Series                       | Han-Modular®                            |
| Type of accessory            | Docking frame                           |
| Description of the accessory | Float mount<br>for 2 modules<br>a ... f |

### Technical characteristics

|   |                 |
|---|-----------------|
| Limiting temperature                    | -40 ... +125 °C |
| Mating cycles                           | ≥500            |
| Mating cycles with other HMC components | ≥10,000         |
| Floating tolerance                      | ±2 mm           |
| Lock-in range                           | ±4 mm           |

### Material properties

|                             |               |
|-----------------------------|---------------|
| Material                    | Zinc die-cast |
| RoHS                        | compliant     |
| ELV status                  | compliant     |
| China RoHS                  | e             |
| REACH Annex XVII substances | No            |
| REACH ANNEX XIV substances  | No            |
| REACH SVHC substances       | No            |



Pushing Performance

## Specifications and approvals

|                |                         |
|----------------|-------------------------|
| Specifications | EN 60664-1<br>IEC 61984 |
|----------------|-------------------------|

## Commercial data

|                                |   |
|--------------------------------|---|
| Packaging size                 | 1   |
| Net weight                     | 211 g   |
| Country of origin              | China   |
| European customs tariff number | 85389099  |
| eCl@ss                         | 27440206 Module carrier frame for industrial connectors |