

Number of contacts

# max. 48

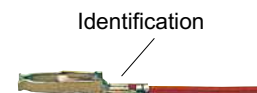
Ⓘ



Ⓡ

## Accessories

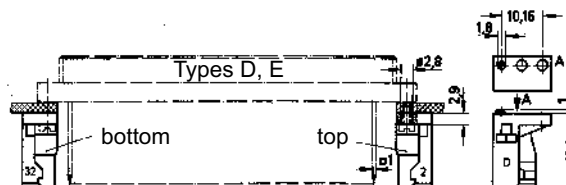
Identification	No. of contacts	Part number	Drawing	Dimensions in mm																
<b>Female FC crimp contacts</b> individual contacts <sup>1)</sup> FC1 FC2 FC3 Bandoliered contacts (approx. 2,500 pcs.) FC1 FC2 FC3		09 06 000 6464 09 06 000 6461 09 06 000 6462 09 06 000 6454 09 06 000 6451 09 06 000 6452	<table border="1"> <thead> <tr> <th>Identi- fication</th> <th>Wire gauge mm<sup>2</sup></th> <th>AWG</th> <th>Insulations ø mm</th> </tr> </thead> <tbody> <tr> <td>1</td> <td>0.09-0.25</td> <td>28-24</td> <td>0.7-1.5</td> </tr> <tr> <td>2</td> <td>0.14-0.56</td> <td>26-20</td> <td>0.8-2.0</td> </tr> <tr> <td>3</td> <td>0.50-1.50</td> <td>20-16</td> <td>1.6-2.8</td> </tr> </tbody> </table> <p>3.5 + 0.5 mm of insulation is stripped from the wires to be crimped.                      For the fabrication in line with the specification please use exclusively crimp tools approved by HARTING (see DIN EN 60352-2)                      Crimping tools see chapter 30</p>	Identi- fication	Wire gauge mm <sup>2</sup>	AWG	Insulations ø mm	1	0.09-0.25	28-24	0.7-1.5	2	0.14-0.56	26-20	0.8-2.0	3	0.50-1.50	20-16	1.6-2.8	
Identi- fication	Wire gauge mm <sup>2</sup>	AWG	Insulations ø mm																	
1	0.09-0.25	28-24	0.7-1.5																	
2	0.14-0.56	26-20	0.8-2.0																	
3	0.50-1.50	20-16	1.6-2.8																	
<b>Mateable with                      1 x 1 mm wrap posts</b>																				



## Distance fixing brackets for female connectors

Type D  
 Type E

top (pos. 2)  
 09 04 000 9907<sup>f)</sup>  
 bottom (pos. 32)  
 09 04 000 9906<sup>f)</sup>

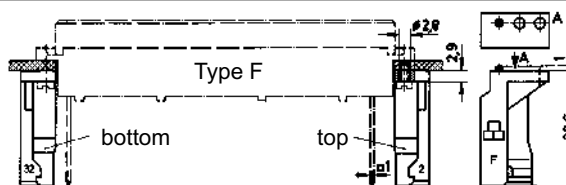


Type F

Ⓘ

Ⓡ

top (pos. 2)  
 09 06 000 9936<sup>f)</sup>  
 bottom (pos. 32)  
 09 06 000 9937<sup>f)</sup>



<sup>1)</sup> Packaging unit 1,000 pieces  
<sup>f)</sup> Railway classification NFF 16-101, Smoke index: F1, Flammability class: I2