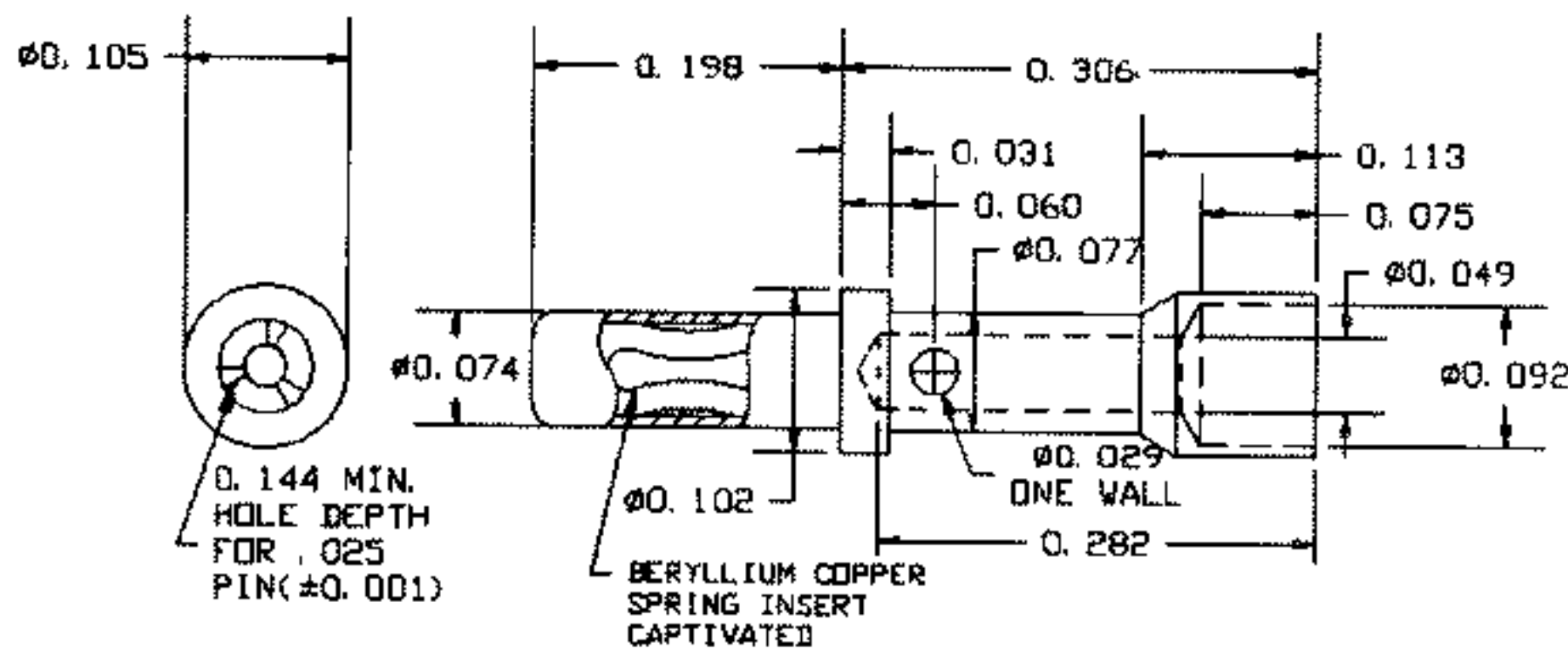


JACKS FOR PATCH CORD ASSEMBLY

09-9058-1-03 JACK FOR .025 PIN-MS 3190 CRIMP BARREL, SIZE 20A

BASIC PART NO. FINISH



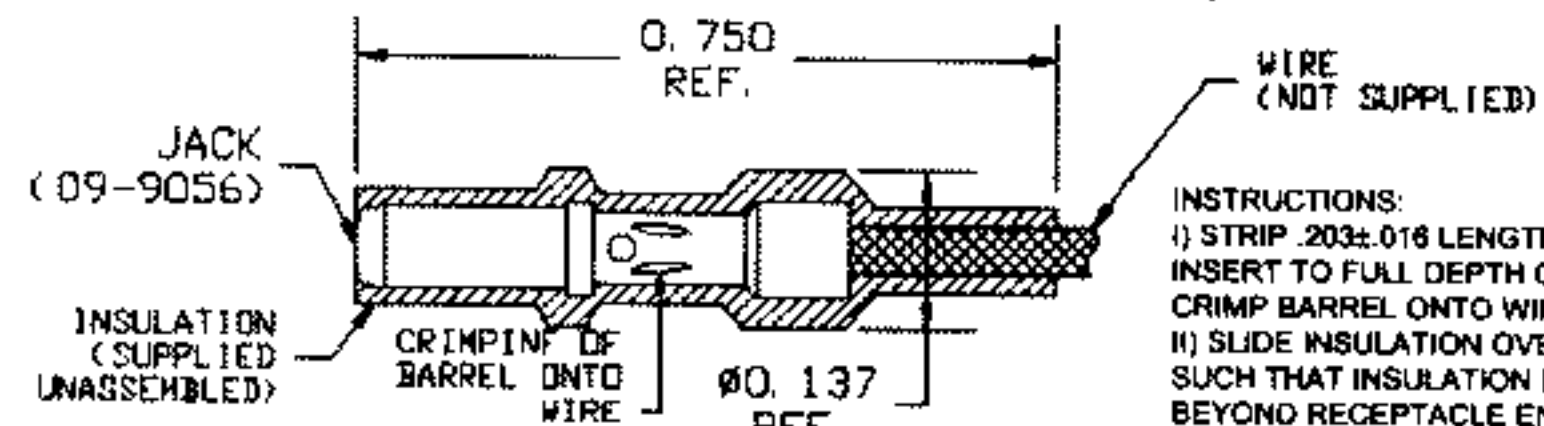
ACCEPTS .025±.001 PIN

PART NO.	BODY (BRASS)	SPRING (BERYLLIUM COPPER)
09-9058-1-03	Gold	Gold

NOTE: JACK 09-9058 USED IN JACK ASSEMBLY 09-9059

09-9057-1-XX10 JACK AND INSULATION FOR PATCH CORD ASSEMBLY MS 3190 CRIMP BARREL, SIZE 20A

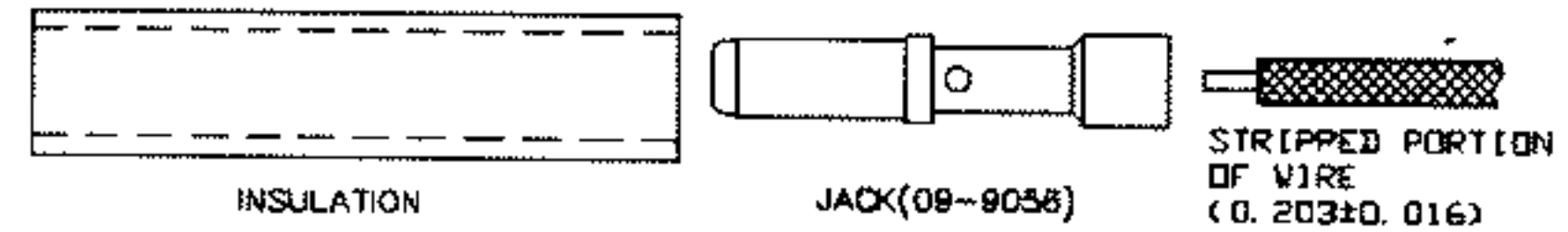
BASIC PART NO. FINISH COLOR



INSTRUCTIONS:
 I) STRIP .203±.016 LENGTH OF WIRE AND INSERT TO FULL DEPTH OF BARREL HOLE. CRIMP BARREL ONTO WIRE.
 II) SLIDE INSULATION OVER JACK AND WIRE SUCH THAT INSULATION DOES NOT EXTEND BEYOND RECEPTACLE END OF JACK. ASSEMBLY SHOULD BE HEATED AT 275°F FOR APPROX. TWO MINUTES.

RECOMMENDED WIRE:
 NO.22 GAGE, 7 STRANDS, NO. 30 WIRE, PTFE INSULATION, .054 MAX. DIA. OVER INSULATION

UNASSEMBLED VIEW

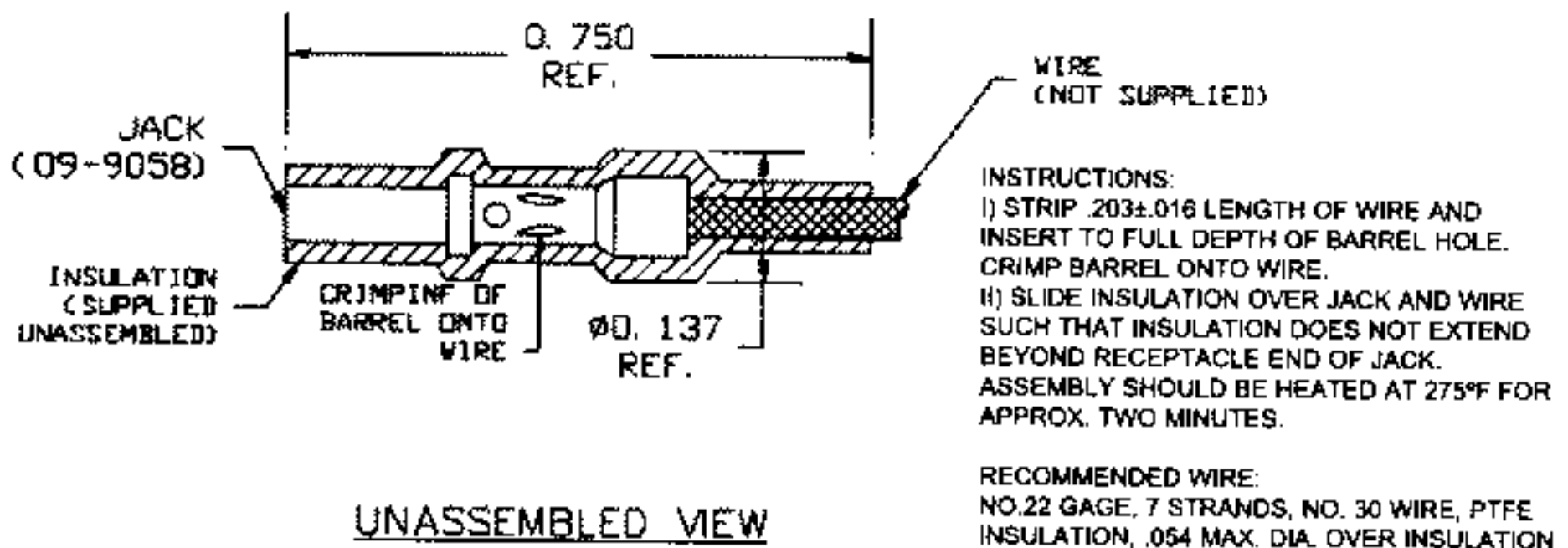


ACCEPTS .040±.001 PIN

PART NO. NUMBER	BODY (BRASS)	SPRING (BERYLLIUM COPPER)	INSULATION (POLYOLEFIN PLASTIC)
09-9057-1-0310	Gold	Gold	Black
0410	Electro Tin	Electro Tin	Black
0610	Electro Tin	Gold	Black
06310	Bright Tin-Lead	Gold	Black
08810	Bright Tin-Lead	Bright Tin-Lead	Black

09-9059-1-0310 JACK AND INSULATION FOR PATCH CORD ASSEMBLY MS 3190 CRIMP BARREL, SIZE 20A

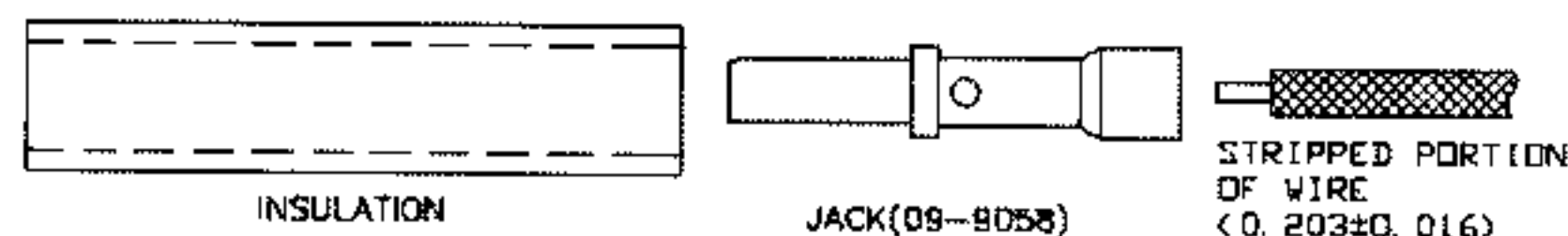
BASIC PART NO. FINISH COLOR



INSTRUCTIONS:
 I) STRIP .203±.016 LENGTH OF WIRE AND INSERT TO FULL DEPTH OF BARREL HOLE. CRIMP BARREL ONTO WIRE.
 II) SLIDE INSULATION OVER JACK AND WIRE SUCH THAT INSULATION DOES NOT EXTEND BEYOND RECEPTACLE END OF JACK. ASSEMBLY SHOULD BE HEATED AT 275°F FOR APPROX. TWO MINUTES.

RECOMMENDED WIRE:
 NO.22 GAGE, 7 STRANDS, NO. 30 WIRE, PTFE INSULATION, .054 MAX. DIA. OVER INSULATION

UNASSEMBLED VIEW

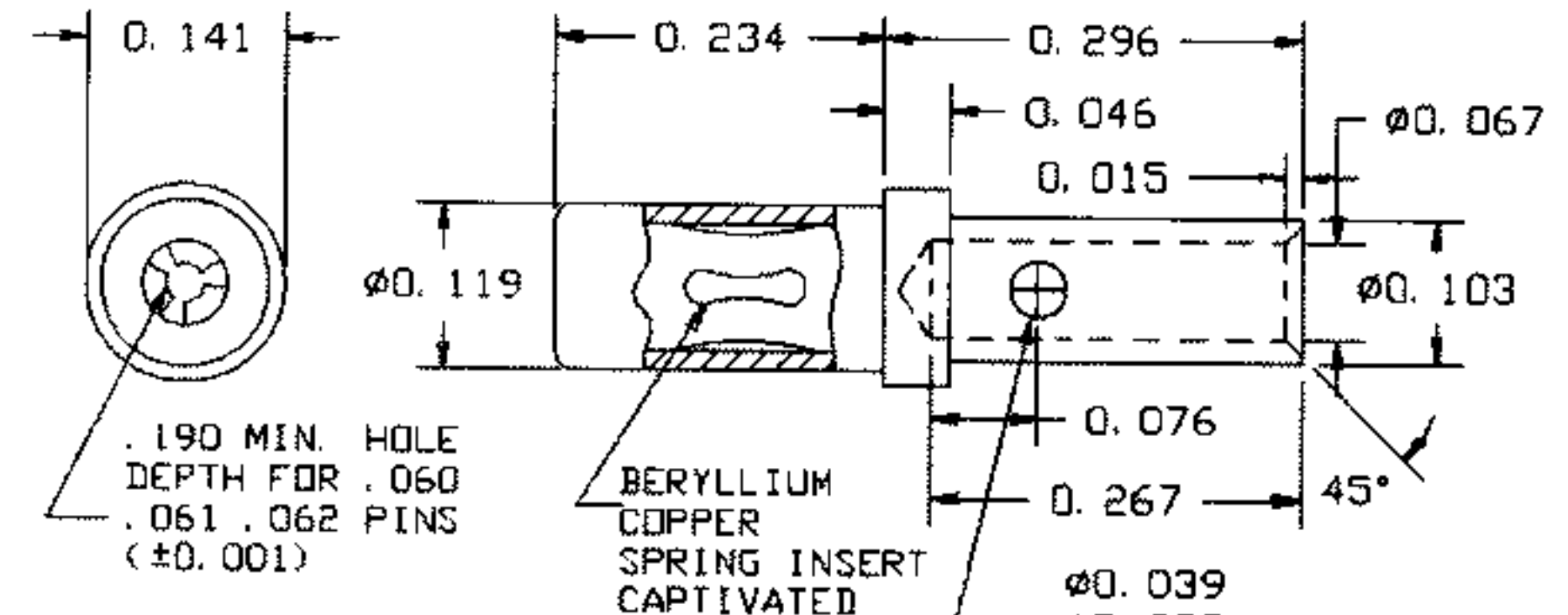


ACCEPTS .025±.001 PIN

PART NO. NUMBER	BODY (BRASS)	SPRING (BERYLLIUM COPPER)	INSULATION (POLYOLEFIN PLASTIC)
09-9059-1-0310	Gold	Gold	Black

09-9070-1-XX JACK FOR .060, .061 AND .062 PINS* MS 3190 CRIMP BARREL, SIZE 16

BASIC PART NO. FINISH



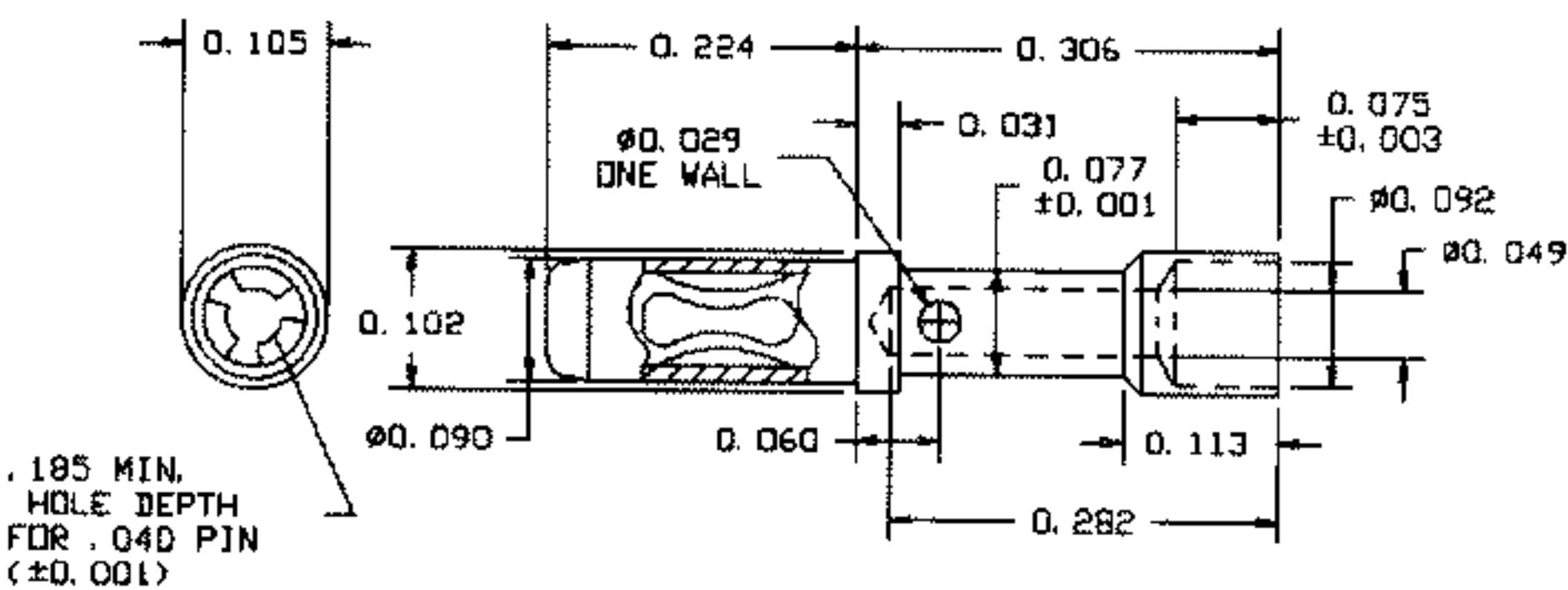
ACCEPTS .060, .061 AND .062 PINS (±.001)

PART NO. NUMBER	BODY (BRASS)	SPRING (BERYLLIUM COPPER)
09-9070-1-03	Gold	Gold
04	Electro Tin	Electro Tin
06	Electro Tin	Gold
063	Bright Tin-Lead	Gold
088	Bright Tin-Lead	Bright Tin-Lead

NOTE: JACK 09-9070 USED IN JACK ASSEMBLY 09-9071
 *USE ONE SIZE PIN ONLY- NOT RECOMMENDED FOR SMALLER PIN USE AFTER LARGER PIN HAS BEEN USED

09-9056-1-XX JACK FOR .040 PIN-MS 3190 CRIMP BARREL, SIZE 20A

BASIC PART NO. FINISH



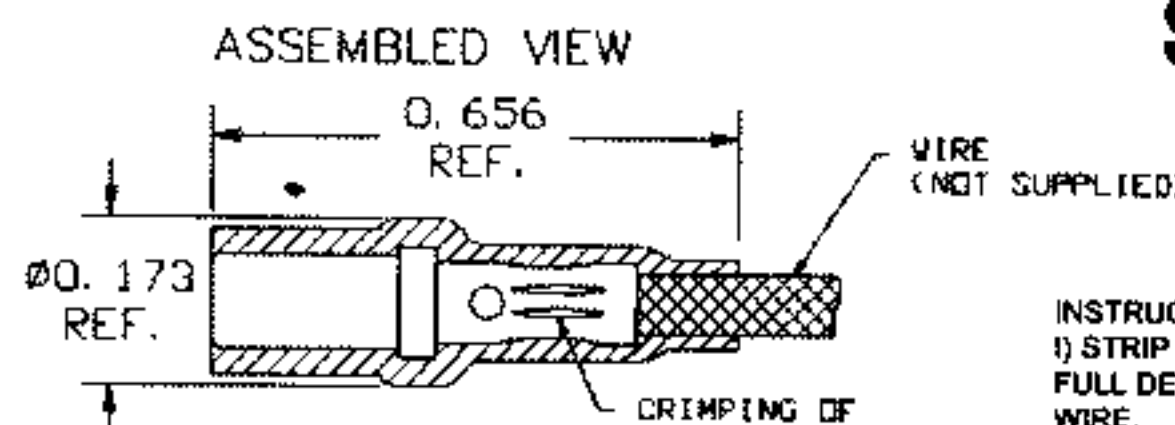
ACCEPTS .040±.001 PIN

PART NO.	BODY (BRASS)	SPRING (BERYLLIUM COPPER)
09-9056-1-03	Gold	Gold
04	Electro Tin	Electro Tin
06	Electro Tin	Gold
063	Bright Tin-Lead	Gold
088	Bright Tin-Lead	Bright Tin-Lead

NOTE: JACK 09-9056 USED IN JACK ASSEMBLY 09-9057

09-9071-1-XX10 JACK AND INSULATION FOR MS 3190 CRIMP BARREL, SIZE 16

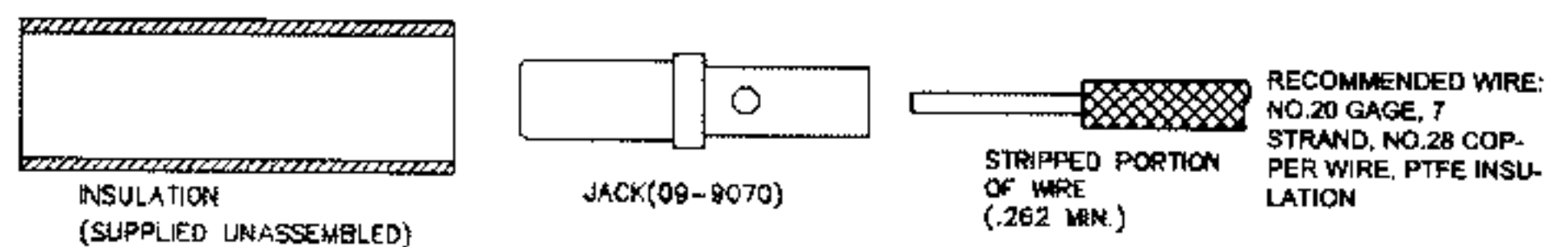
BASIC PART NO. FINISH COLOR



ACCEPTS .060 AND .062 PINS

INSTRUCTIONS:
 I) STRIP .262 MIN. LENGTH OF WIRE AND INSERT TO FULL DEPTH OF BARREL HOLE. CRIMP BARREL ONTO WIRE.
 II) SLIDE INSULATION OVER JACK AND WIRE SUCH THAT INSULATION DOES NOT EXTEND BEYOND RECEPTACLE END OF JACK. ASSEMBLY SHOULD BE HEATED AT 275°F FOR APPROX. TWO MINUTES.

UNASSEMBLED VIEW



PART NO. NUMBER	BODY (BRASS)	SPRING (BERYLLIUM COPPER)	INSULATION (POLYOLEFIN PLASTIC)
09-9071-1-0310	Gold	Gold	Black
0410	Electro Tin	Electro Tin	Black
0610	Electro Tin	Gold	Black
06310	Bright Tin-Lead	Gold	Black
08810	Bright Tin-Lead	Bright Tin-Lead	Black

FOR ADDITIONAL SIZES AND MATERIALS, CONTACT FACTORY

BLK	BRN	RED	ORN	YEL	GRN	BLU	PUR	GRY	WHT
10	11	12	13	14	15	16	17	18	19



8()-847-4162 (Outside N.Y.S.)
 Pl : 212-777-6571 Fax: 212-991-0161
 s: es@concord-electronics.com
 e: ineering@concord-electronics.com