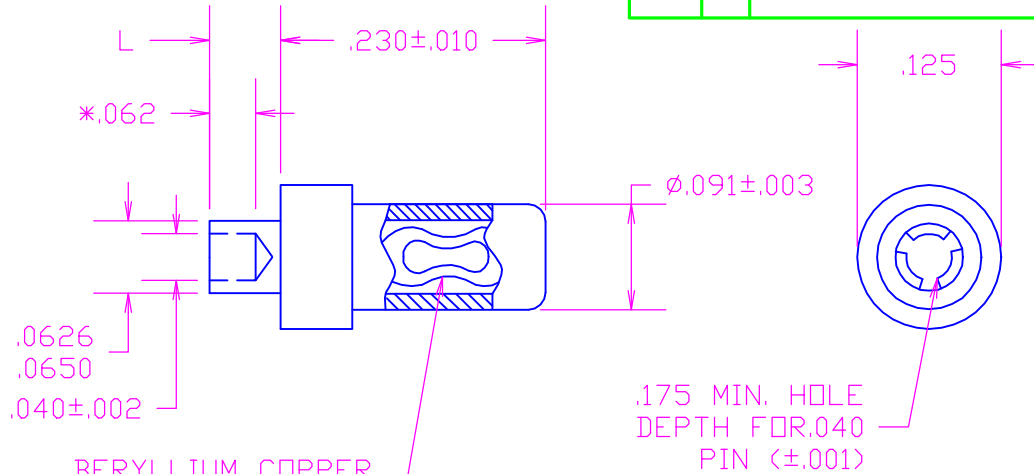


DATE	SYM	REVISION RECORD	AUTH.	DR.	CK.
5/1/01	-	ISSUED		NT	DG
7/15/02	1	UPDATE GOLD PLATING SPEC.		NT	DG
3/27/03	2	ADDED 088 AND 063 PLATING	DI	NT	DI



BERYLLIUM COPPER
SPRING INSERT CAPTIVATED

*FOR DASH 1- .062 BECAME .040

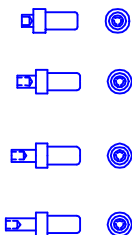
RECOMMENDED MOUNTING HOLE .067±.002 DIA.<#51 DRILL>

ACCEPTS .040 PIN

FINISH CODE	COMPONENT	MATERIAL	FINISH
03	BODY	BRASS PER ASTM B16	.000010" GOLD PER ASTM B 488, TYPE II, CODE C, OVER .0001" NICKEL PER AMS-QQ-N-290
	SPRING	BERYLLIUM COPPER PER ASTM B194	.000030" GOLD PER ASTM B 488, TYPE II, CODE C OVER .0001" NICKEL PER AMS-QQ-N-290
04	BODY	BRASS PER ASTM B16	.0001" ELECTRO-TIN PER ASTM B545 OVER .0001" NICKEL
	SPRING	BERYLLIUM COPPER PER ASTM B194	.0002" BRIGHT ELECTRO-TIN PER ASTM B545, TYPE I OVER .000050" NICKEL
06	BODY	BRASS PER ASTM B16	.0001" ELECTRO-TIN PER ASTM B545, OVER .0001" NICKEL
	SPRING	BERYLLIUM COPPER PER ASTM B194	.000030" GOLD PER ASTM B 488, TYPE II, CODE C OVER .0001" NICKEL PER AMS-QQ-N-290
063	BODY	BRASS PER ASTM B16	.0002" BRIGHT 93%-7% TIN-LEAD, OVER .0001" NICKEL
	SPRING	BERYLLIUM COPPER PER ASTM B194	.000030" GOLD PER ASTM B 488, TYPE II, CODE C OVER .0001" MIN. NICKEL PER AMS-QQ-N-290
088	BODY	BRASS PER ASTM B16	.0002" BRIGHT 93%-7% TIN-LEAD OVER .0001" NICKEL
	SPRING	BERYLLIUM COPPER PER ASTM B194	.0002" BRIGHT 93%-7% TIN-LEAD, OVER .0001" NICKEL

PART NUMBER:	L:	BOARD THICKNESS:
09-9035-1-XX	.062	1/32
09-9035-2-XX	.094	1/16
09-9035-3-XX	.125	3/32
09-9035-4-XX	.156	1/8

ACTUAL SIZE



TOLERANCES (EXCEPT AS NOTED)	CONCORD ELECTRONICS CORPORATION		
DECIMAL ± .005	P/N	SCALE	30 GREAT JONES ST. NEW YORK N.Y. 10012
FRACTIONAL ± 1/64	TITLE P.C. JACK FOR .040 PIN		
ANGULAR ±	DATE 4/30/01	DRAWING NUMBER 09-9035-X-XX	