

# Product data sheet

## Power connectors



Product description **RD24 Female panel mount connector, Contacts: 6+PE, unshielded, screw clamp, IP67**

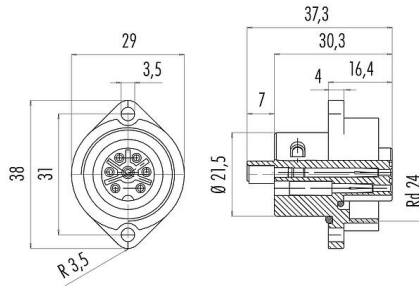
Area **RD24 series 692**

Part no. **09 0220 00 07**

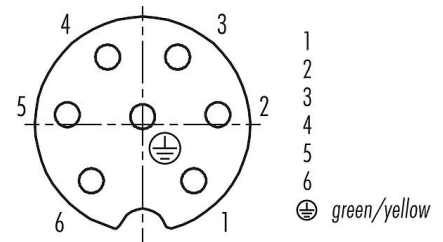
### Illustration



### Scale drawing



### Contact arrangement (Plug-in side)



You can find the assembly instructions on the next page.

### Technical data

#### General features

Part no.	<b>09 0220 00 07</b>
Connector design	Female panel mount connector
Version	Connector socket straight
Connector locking system	screw
Termination	screw clamp
Degree of protection	IP67
Cross-sectional area	max. 1.50 mm <sup>2</sup> / AWG 16
Temperature range from/to	-40 °C / 100 °C
Mechanical operation	> 500 Mating cycles
Weight (g)	25.14
Customs tariff number	85369010

#### Electrical parameters

Rated voltage	250 V
Rated impulse voltage	4000 V
Rated current (40 °C)	10.0 A
Insulation resistance	≥ 10 <sup>10</sup> Ω
Pollution degree	3
Overvoltage category	III
Insulating material group	III
EMC compliance	unshielded

#### Material

Contact body material	PBT
Contact material	CuSn (bronze)
Contact plating	Ag (silver)
REACH SVHC	CAS 7439-92-1 (Lead)
SCIP number	440bb629-4194-4da8-888c-1dafa10c7a1e

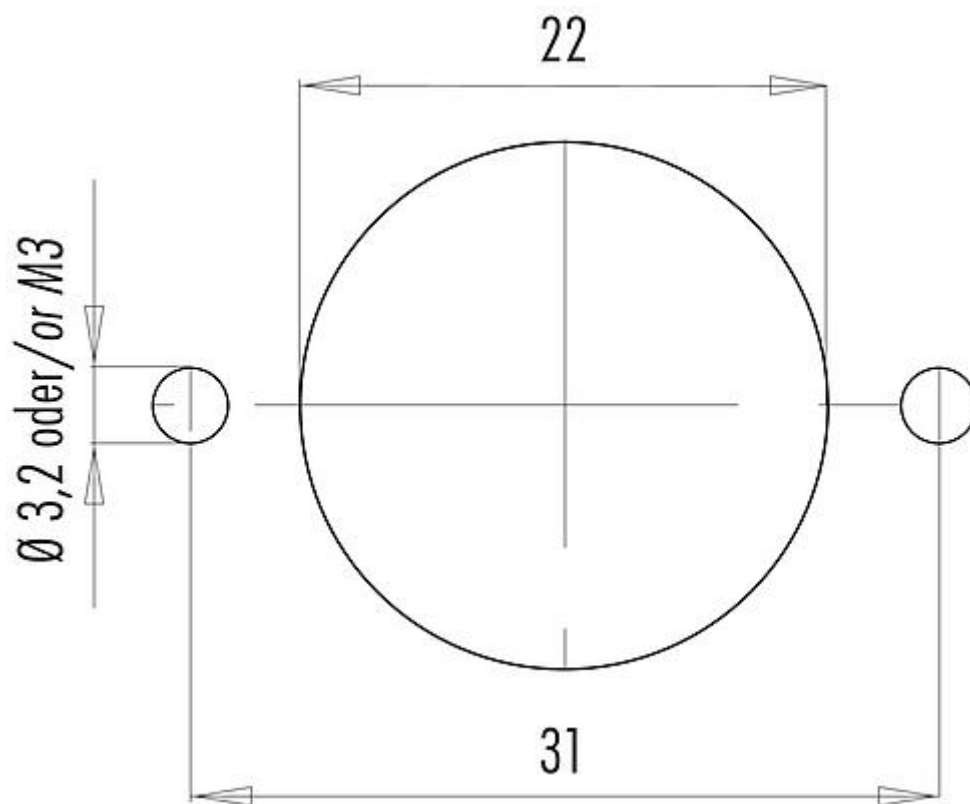
Product description	<b>RD24 Female panel mount connector, Contacts: 6+PE, unshielded, screw clamp, IP67</b>
Area	<b>RD24 series 692</b>
Part no.	<b>09 0220 00 07</b>

### Classifications

eCl@ss 11.1  
ETIM 7.0

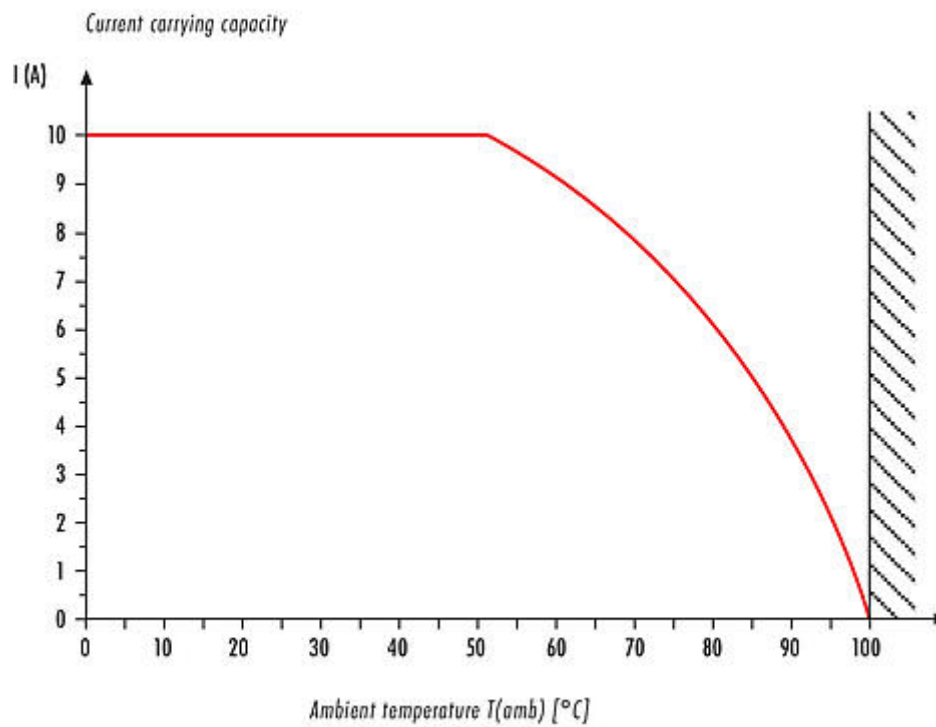
27-44-01-09  
EC003569

### Assembly instructions / Panel cut-out



Product description	<b>RD24 Female panel mount connector, Contacts: 6+PE, unshielded, screw clamp, IP67</b>
Area	<b>RD24 series 692</b>
Part no.	<b>09 0220 00 07</b>

## Derating curve



Product description	<b>RD24 Female panel mount connector, Contacts: 6+PE, unshielded, screw clamp, IP67</b>
Area	<b>RD24 series 692</b>
Part no.	<b>09 0220 00 07</b>

### **General Disclaim Notice**

The connector must not be plugged or unplugged under load. Non-observance and improper use can result in personal injury.

The connectors have been developed for applications in plant engineering, control and electrical equipment construction. The user is responsible for checking whether the connectors can also be used in other areas of application.

Plug connectors with enclosure protection IP67 and IP68 are not suitable for use under water. When used outdoors, the plug connectors must be protected separately against corrosion. For further information on the IP protection classes, please refer to the "Technical Information" download centre.