

THE INFORMATION CONTAINED HEREIN IS CONSIDERED "PROPRIETARY" TO BEL FUSE INC. AND SHALL NOT BE COPIED, REPRODUCED OR DISCLOSED WITHOUT THE WRITTEN APPROVAL OF BEL FUSE INC.

LED 2 & 4 POLARITY			LED 1 & 3 POLARITY		
PIN 13	PIN 14	COLOR	PIN 15	PIN 16	COLOR
-	+	YELLOW	-	+	YELLOW
+	-	GREEN	+	-	GREEN

RoHS



RJ45

**ELECTRICAL CHARACTERISTICS @ 25°C**

**URNS RATIO**

TP1	1CT : 1CT ±2%
TP2	1CT : 1CT ±2%
TP3	1CT : 1CT ±2%
TP4	1CT : 1CT ±2%

**□CL @ 100kHz/100mVRMS**

8mA DC BIAS 350 μH MIN.

**INS. LOSS**

0.1MHz TO 1MHz	-1.1 dB MAX
1MHz TO 65MHz	-0.5 dB MAX
65MHz TO 100MHz	-0.8 dB MAX
100MHz TO 125MHz	-1.2 dB MAX

**RET. LOSS (MIN) @ 100ΩHMS ±15%**

0.5MHz-40MHz	-18 dB
40MHz-100MHz	-12+20LOG(f/80MHz) dB

**CM TO CM REJ**

100kHz - 100MHz -30 dB MIN

**CM TO DM REJ**

100kHz - 100MHz -35 dB MIN

**OPERATING TEMPERATURE:**

-40° TO +85°C

**HIPOT (Isolation Voltage):**

2250 VDC

**TEST POINTS: RJ1-8 + P11-12 ISOLATED FROM P1-10**

**AND RJ1-8 + P11-12 ISOLATED FROM SHIELD**

**100% OF PRODUCTION TESTED TO COMPLY WITH**

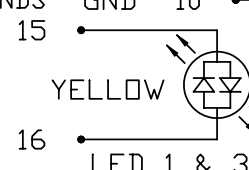
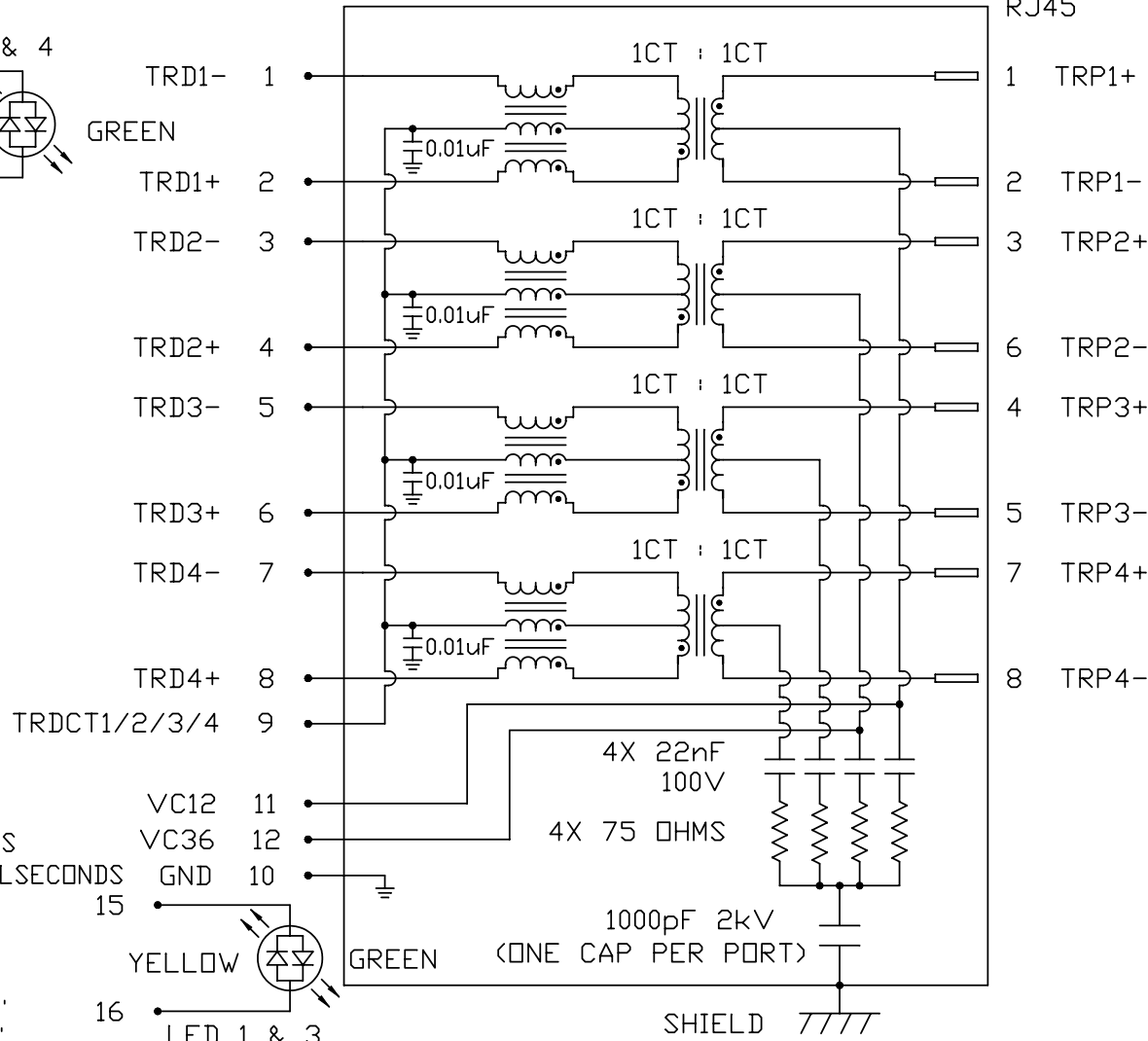
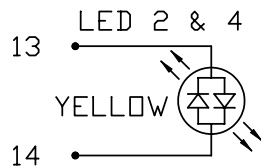
**IEEE 802.3 ISOLATION REQUIREMENTS.**

**BALANCED DC LINE CURRENT**

720mA MAX. @ 57 VDC CONTINUOUS  
1.2A MAX. @ 57 VDC FOR 200 MILLSECONDS

**LED 1, 2, 3 & 4**

VF (FORWARD VOLTAGE)	IF=20mA	GREEN	2.2V TYP.
		YELLOW	2.1V TYP.
λD (DOMINANT WAVELENGTH)	IF=20mA	GREEN	565nm TYP.
		YELLOW	590nm TYP.



<b>ORIGINATED BY</b>	<b>DATE</b>
CHOW WANCHUNG	2012-08-15
<b>DRAWN BY</b>	<b>DATE</b>
TAN QIGUANG	2012-08-15

**TITLE** 2X2 gigabit MagJack®  
WITH UPPER AND LOWER LED  
PoEp(EXTENDED TEMPERATURE)  
PATENTED

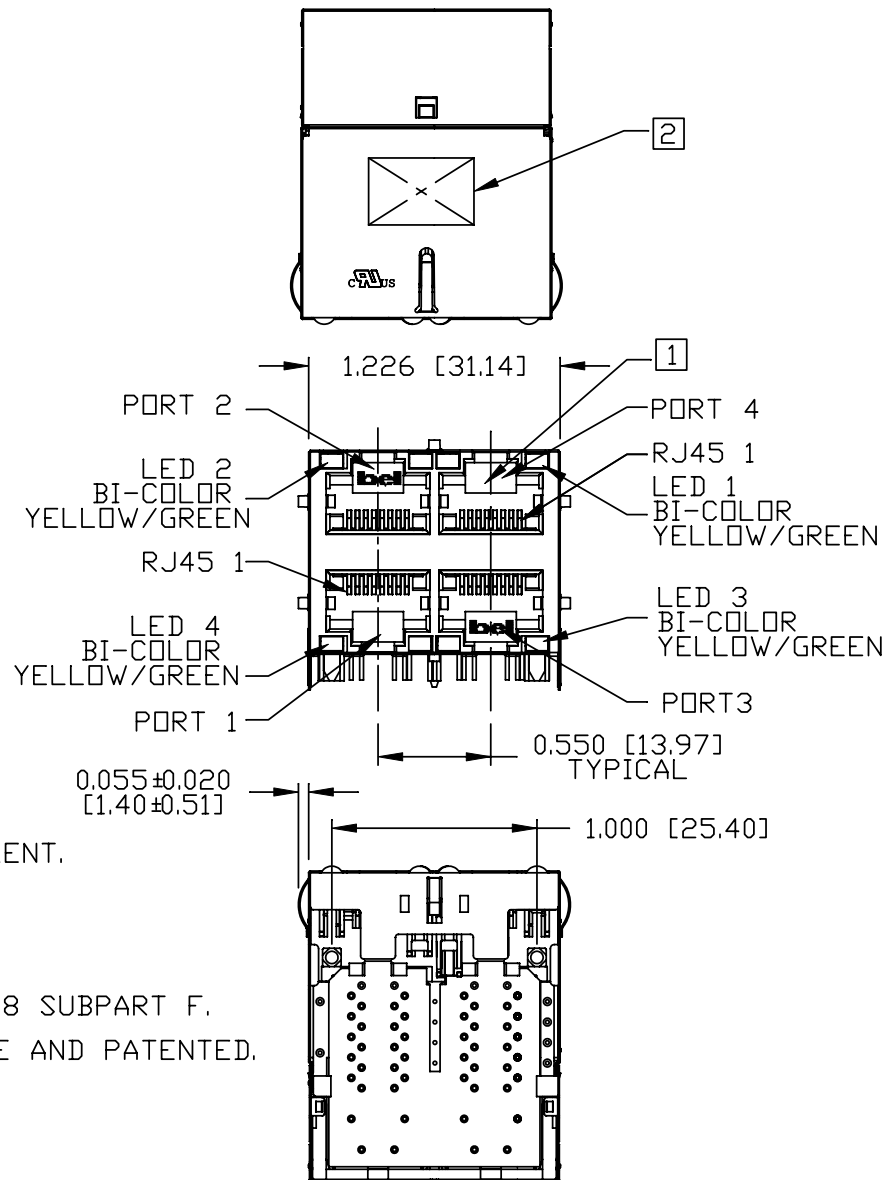
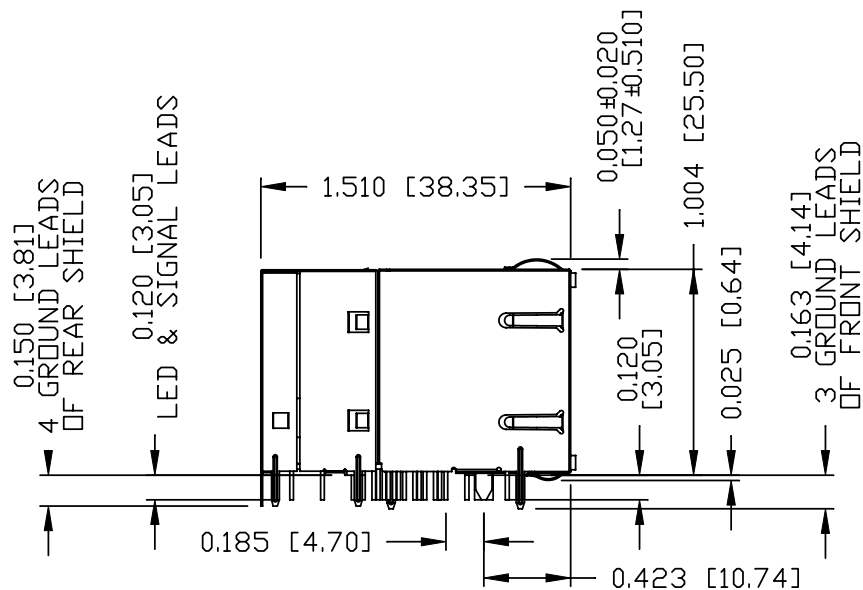
<b>PART NO. / DRAWING NO.</b>	0895-2S2R-FM
<b>FILE NAME</b>	0895-2S2R-FM_B.DWG

<b>STANDARD DIM.</b>	[ ] METRIC DIM. AS REFERENCE	
<b>TOL. IN INCH</b>	<b>UNIT : INCH [mm]</b>	<b>REV. : B</b>
.X		<b>SCALE : N/A</b>
.XX		<b>SIZE : A4</b>
.XXX		<b>PAGE : 2</b>



THE INFORMATION CONTAINED HEREIN IS CONSIDERED "PROPRIETARY" TO BEL FUSE INC. AND SHALL NOT BE COPIED, REPRODUCED OR DISCLOSED WITHOUT THE WRITTEN APPROVAL OF BEL FUSE INC.

RoHS



**NOTES:**

PLASTIC HOUSING: THERMOPLASTIC PBT  
 FLAMMABILITY RATING UL 94V-0  
 CONTACT PLATING: 50 MICRO-INCH HARD GOLD PLATING OR EQUIVALENT.  
 OUTPUT PINS: TIN-COATED COPPER WIRE, DIA 0.018 INCH.  
 METAL SHIELD: NICKEL PLATED ON COPPER ALLOY.  
 (ALL GROUND LEADS ARE SOLDER DIPPED)

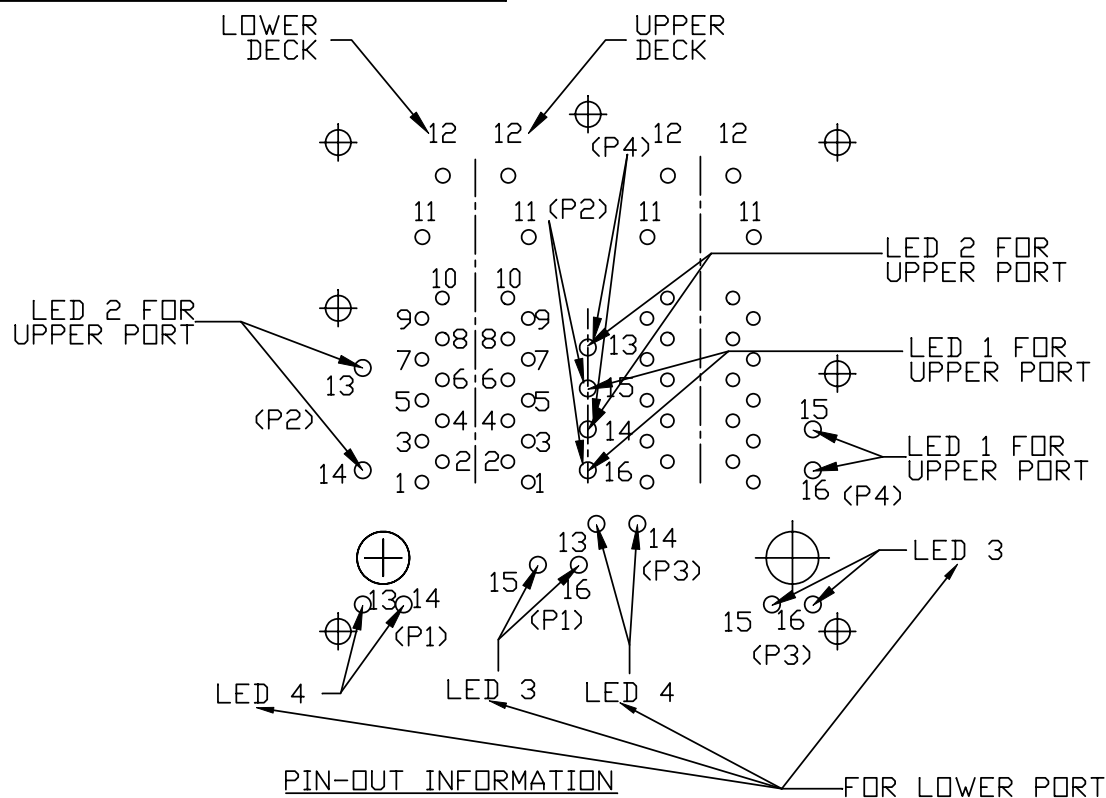
1. JACK CAVITY CONFORMS TO FCC RULES AND REGULATIONS, PART 68 SUBPART F.
2. MARK PART WITH MFG LOGO, MFG NAME, PART NUMBER, DATE CODE AND PATENTED.
3. THE PRODUCT IS RoHS COMPLIANT.
4. LED POLARITY IS REFER TO GENERAL REQUEST OF 'C' LED
5. THE PRODUCT IS PATENT PRODUCT. THE PATENT NUMBER ARE U.S. PAT. 5,736,910 AND U.S. PAT. 6,840,817 AND U.S. PAT. 7,123,117.

UL RECOGNIZED - FILE #E196366 AND E169987.

ORIGINATED BY ANTON LIAO	DATE 2012-08-15	TITLE 2X2 glgabit MagJack® WITH UPPER AND LOWER LED PoEp<EXTENDED TEMPERATURE> PATENTED	PART NO. / DRAWING NO. 0895-2S2R-FM	STANDARD DIM. TOL. IN INCH .X .XX .XXX	[ ] METRIC DIM. AS REFERENCE	
					UNIT : INCH [mm]	REV. : B
DRAWN BY HE ZHEN	DATE 2012-08-15		FILE NAME 0895-2S2R-FM_B.DWG	±0.010	SCALE : N/A	SIZE : A4
						PAGE : 3



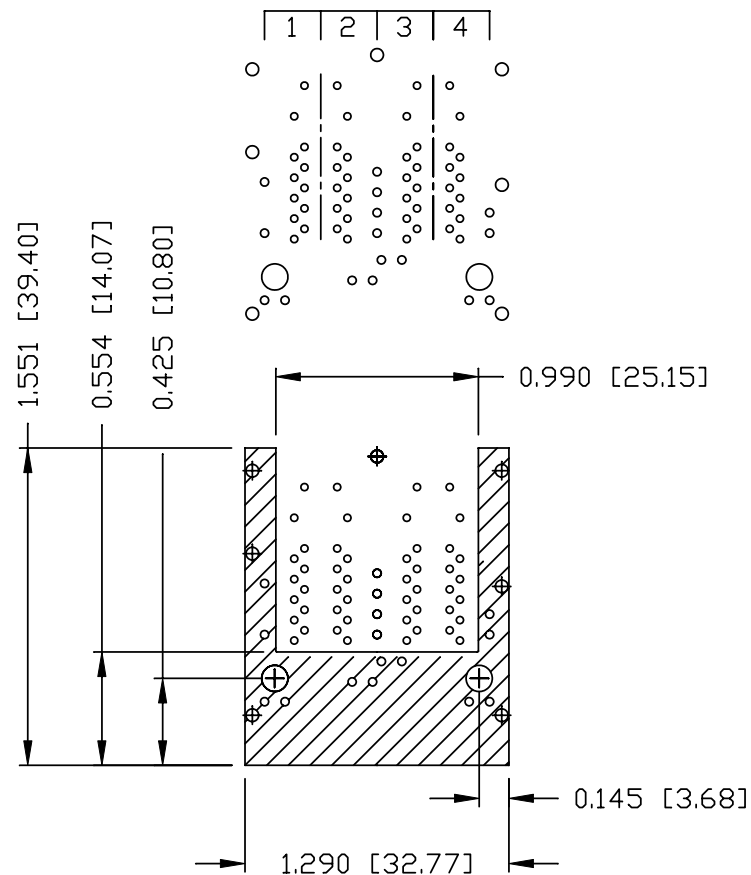
THE INFORMATION CONTAINED HEREIN IS CONSIDERED "PROPRIETARY" TO BEL FUSE INC. AND SHALL NOT BE COPIED, REPRODUCED OR DISCLOSED WITHOUT THE WRITTEN APPROVAL OF BEL FUSE INC.



PIN-OUT INFORMATION  
(COMPONENT SIDE VIEW)

10	GND		
9	TRDCT1/2/3/4		
8	TRD 4+		
7	TRD 4-		
6	TRD 3+	16	YEL(+) GRN(-)
5	TRD 3-	15	YEL(-) GRN(+)
4	TRD 2+	14	YEL(+) GRN(-)
3	TRD 2-	13	YEL(-) GRN(+)
2	TRD 1+	12	VC36
1	TRD 1-	11	VC12

PORT ASSIGNMENT  
(COMPONENT SIDE VIEW)



THE SHADED AREA ON THE CUSTOMER BOARD ARE RECOMMENDED TO BE CLEAR OFF ANY VIA HOLE OR COMPONENT PAD.

<b>ORIGINATED BY</b>	<b>DATE</b>
ANTON LIAO	2012-08-15
<b>DRAWN BY</b>	<b>DATE</b>
HE ZHEN	2012-08-15

**TITLE** 2X2 gigabit MagJack®  
WITH UPPER AND LOWER LED  
PoEp(EXTENDED TEMPERATURE)  
PATENTED

**PART NO. / DRAWING NO.**  
0895-2S2R-FM  
**FILE NAME**  
0895-2S2R-FM\_B.DWG

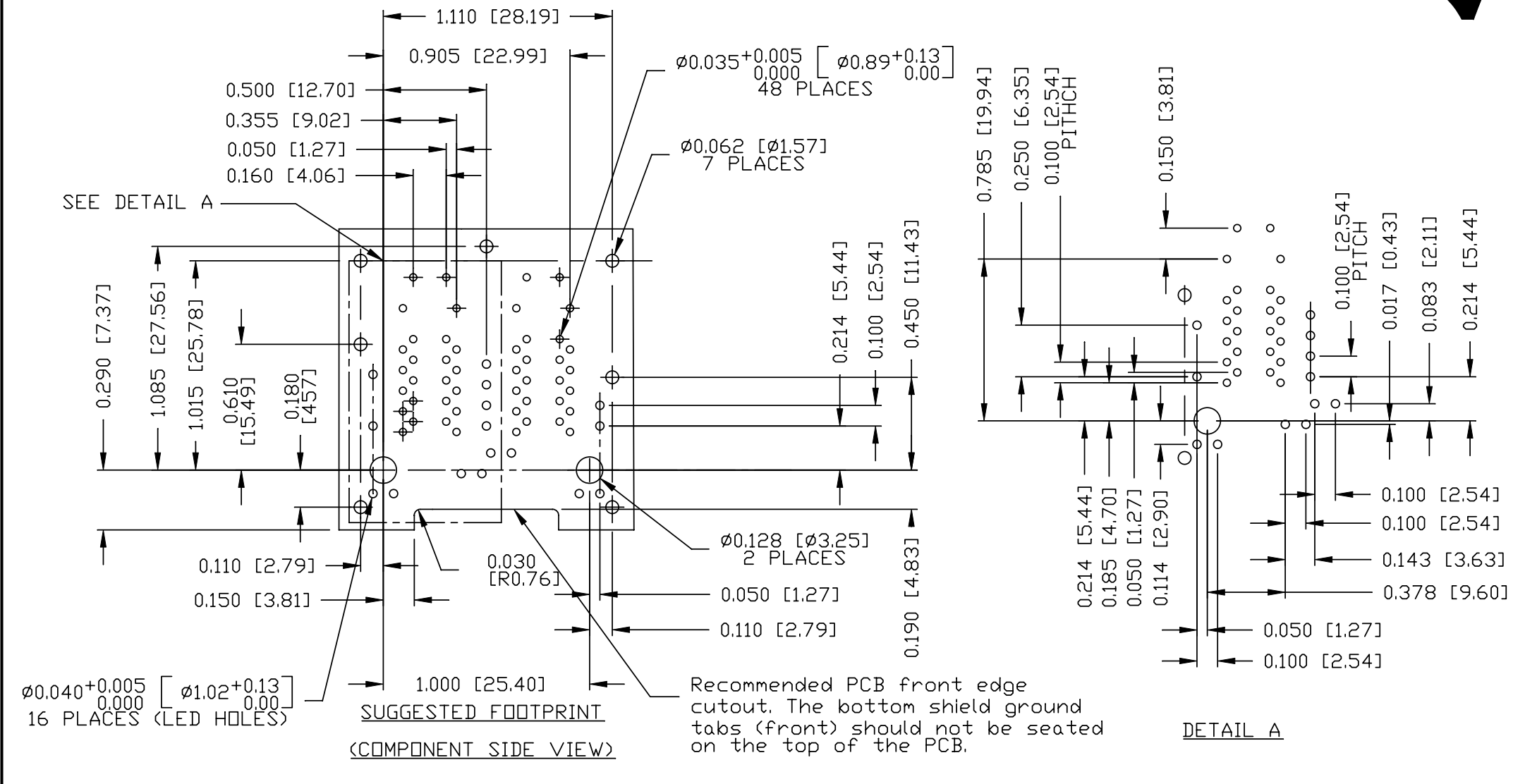
STANDARD DIM.	
TOL. IN INCH	
.X	
.XX	
.XXX	±0.004

[ ] METRIC DIM. AS REFERENCE	
UNIT : INCH [mm]	REV. : B
SCALE : N/A	SIZE : A4
	PAGE : 4



THE INFORMATION CONTAINED HEREIN IS CONSIDERED "PROPRIETARY" TO BEL FUSE INC. AND SHALL NOT BE COPIED, REPRODUCED OR DISCLOSED WITHOUT THE WRITTEN APPROVAL OF BEL FUSE INC.

RoHS



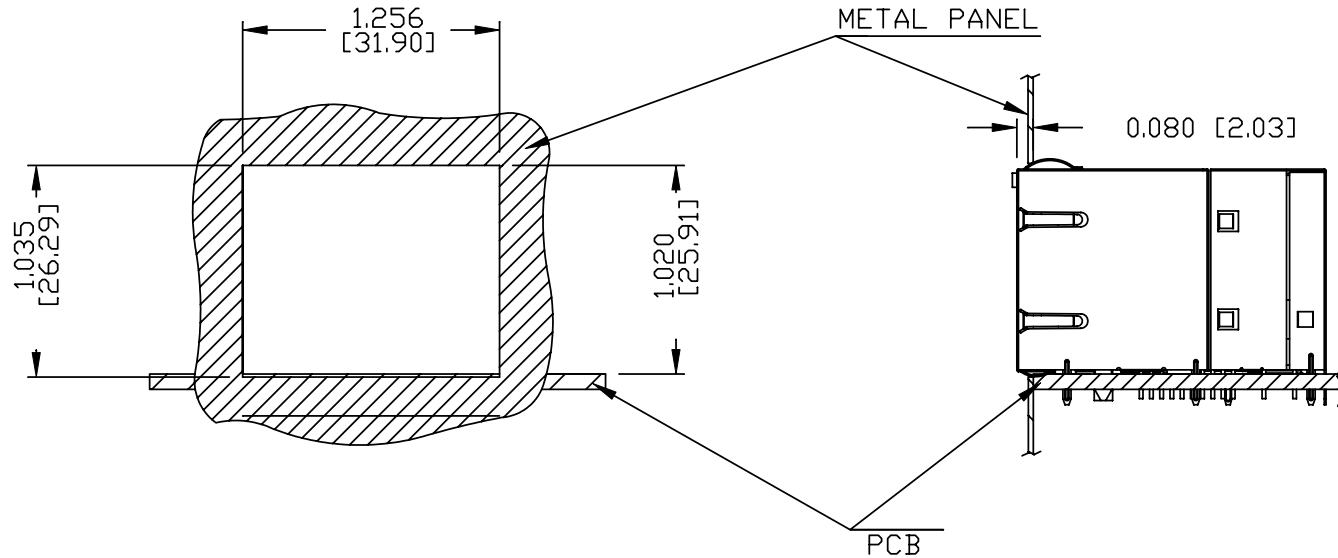
ORIGINATED BY ANTON LIAO	DATE 2012-08-15	TITLE 2X2 gigabit MagJack® WITH UPPER AND LOWER LED PoEp(EXTENDED TEMPERATURE) PATENTED	PART NO. / DRAWING NO. 0895-2S2R-FM	STANDARD DIM. TOL. IN INCH .X .XX .XXX	[ ] METRIC DIM. AS REFERENCE UNIT : INCH [mm] SCALE : N/A	REV. : B SIZE : A4 PAGE : 5	 COMPONENTS FOR A CONNECTED PLANET
DRAWN BY HE ZHEN	DATE 2012-08-15	FILE NAME 0895-2S2R-FM_B.DWG		±0.004			

THE INFORMATION CONTAINED HEREIN IS CONSIDERED "PROPRIETARY" TO BEL FUSE INC. AND SHALL NOT BE COPIED, REPRODUCED OR DISCLOSED WITHOUT THE WRITTEN APPROVAL OF BEL FUSE INC.

RoHS



SUGGESTED PANEL OPENING



NOTE:

THE DISTANCE OF PANEL INSIDE SURFACE RELATIVE TO FRONT SURFACE OF PART IS ONLY A SUGGESTION. IN CASE THIS DISTANCE IS DIFFERENT, THE REQUIRED PANEL OPENING DIMENSIONS CHANGE ACCORDINGLY.

PACKING INFORMATION

PACKING TRAY : 0200M9999-H0 (TOP)  
0200M9999-H1 (BOTTOM)

PACKING QUANTITY : 32 PCS FINISHED GOODS PER TRAY  
7 TRAYS ( 224 PCS FINISHED GOODS) PER CARTON BOX

NOTE : CARDBOARDS ARE PLACED BETWEEN LAYERS OF PACKING TRAY INSIDE CARTON BOX (INCLUDE THE UPPERMOST AND LOWERMOST TRAY)

ORIGINATED BY ANTON LIAO	DATE 2012-08-15	TITLE 2X2 gigabit MagJack® WITH UPPER AND LOWER LED PoEp(EXTENDED TEMPERATURE) PATENTED	PART NO. / DRAWING NO. 0895-2S2R-FM	STANDARD DIM.		[ ] METRIC DIM. AS REFERENCE	
				TOL. IN INCH		UNIT : INCH [mm]	REV. : B
DRAWN BY HE ZHEN	DATE 2012-08-15	FILE NAME 0895-2S2R-FM_B.DWG		.X	±0.004	SCALE : N/A	SIZE : A4
				.XX		⊕ ---	PAGE : 6
				.XXX			

