



U.FL TO RP SMA BULKHEAD CABLE, 105MM

Cable Assembly - U.FL to Reverse Polarity
SMA Bulkhead Female

ORDERING INFORMATION

ORDER NUMBER	DESCRIPTION
080-0001	Cable Assembly: 105mm in Length with Reverse Polarity SMA Female Bulkhead and U.FL Connector using 1.13mm Diameter Cable.

SPECIFICATIONS

SPECIFICATION	VALUE
Frequency Range	DC to 6GHz
Impedance	50 ohms
Operating Temp	-40° to +85° C
Rated Voltage	AC 60V
Contact Resistance	20m ohm max - signal and ground
Withstand Voltage	AC 200V
Insulation Resistance	500M ohm minimum/DC 100V
VSWR	< 1.2:1 @ 900MHz
	< 1.4:1 @ 2400MHz
	< 2.0:1 @ 4900MHz
	< 2.0:1 @ 5900MHz
IL	< 0.4dB @ 900MHz
	< 0.7dB @ 2400MHz
	< 1.5dB @ 4900MHz
	< 2.0dB @ 5900MHz
Bend Radius	6.8mm minimum

Table 2 Specifications

PHYSICAL DIMENSIONS (MM)

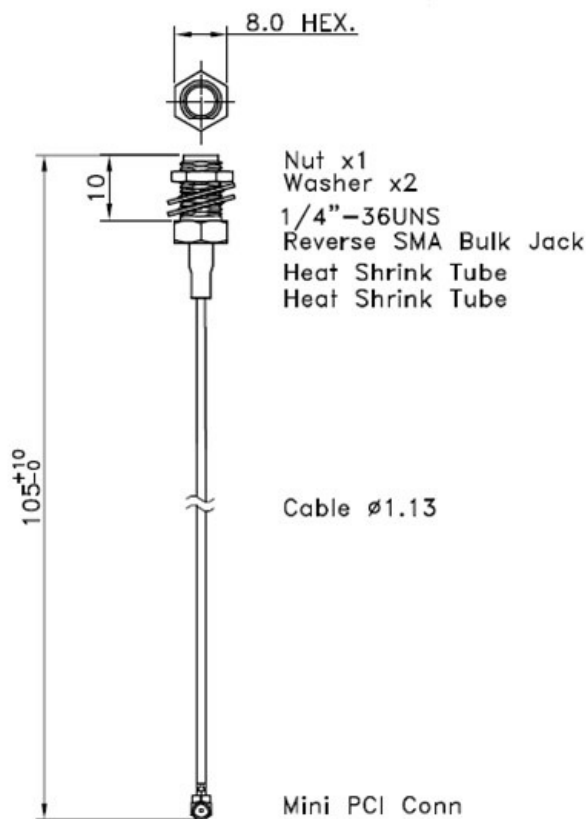
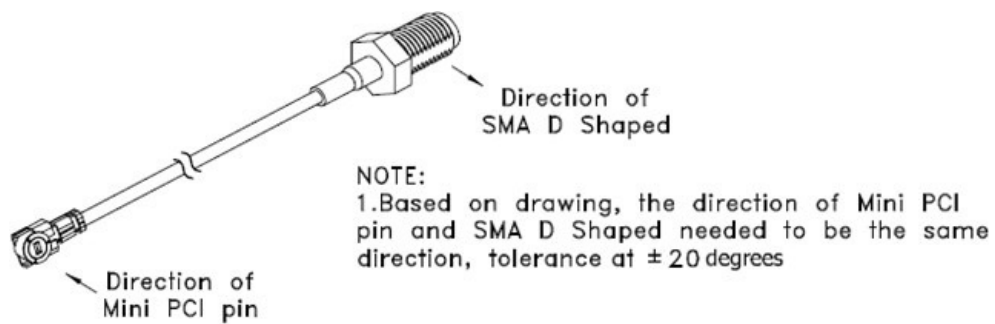


Figure 1 Physical Dimensions

PHYSICAL DIMENSIONS (MM)

RECOMMENDED PANEL CUTOUT

3.80 MAX. PANEL THICKNESS

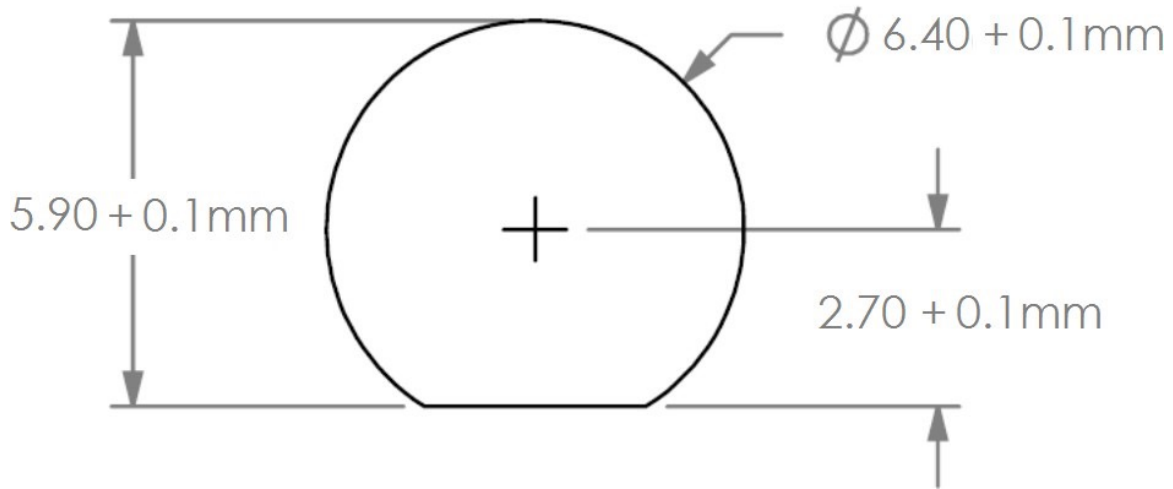


Figure 2 Recommend Cutout

TE TECHNICAL SUPPORT CENTER

USA:	+1 (800) 522-6752
Canada:	+1 (905) 475-6222
Mexico:	+52 (0) 55-1106-0800
Latin/S. America:	+54 (0) 11-4733-2200
Germany:	+49 (0) 6251-133-1999
UK:	+44 (0) 800-267666
France:	+33 (0) 1-3420-8686
Netherlands:	+31 (0) 73-6246-999
China:	+86 (0) 400-820-6015

te.com

TE Connectivity, TE Connectivity (logo) and Every Connection Counts are trademarks. All other logos, products and/or company names referred to herein might be trademarks of their respective owners.

The information given herein, including drawings, illustrations and schematics which are intended for illustration purposes only, is believed to be reliable. However, TE Connectivity makes no warranties as to its accuracy or completeness and disclaims any liability in connection with its use. TE Connectivity's obligations shall only be as set forth in TE Connectivity's Standard Terms and Conditions of Sale for this product and in no case will TE Connectivity be liable for any incidental, indirect or consequential damages arising out of the sale, resale, use or misuse of the product. Users of TE Connectivity products should make their own evaluation to determine the suitability of each such product for the specific application.

©2021 TE Connectivity. All Rights Reserved.

11/21 Original