

# Product data sheet

## Miniature connectors

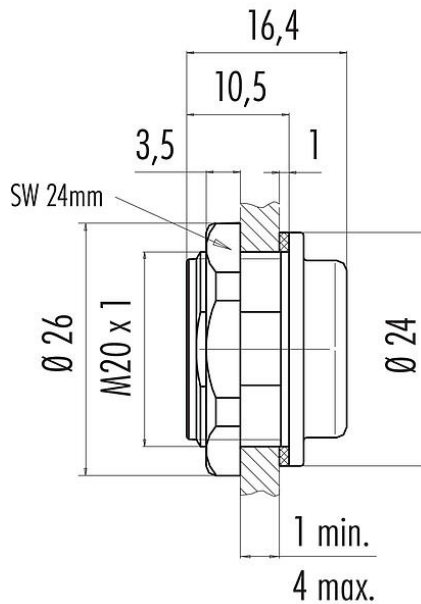


Product description **Snap-In IP67 Adapter, unshielded, VDE, front fastened**  
Area **Snap-In IP67 series 720**  
Part no. **08 2434 000 001**

### Illustration



### Scale drawing



You can find the component part drawing and assembly instructions on the next page.

### Technical data

#### General features

Part no.	<b>08 2434 000 001</b>
Connector design	Adapter
Version	adapter
Temperature range from/to	-25 °C / 85 °C
Weight (g)	7.42
Customs tariff number	85366990

#### Electrical parameters

Pollution degree	2
EMC compliance	unshielded

#### Material

Housing material	PA
REACH SVHC	CAS 7439-92-1 (Lead)
SCIP number	05a38a3d-094f-4305-a54e-1708a531137e



Product description **Snap-In IP67 Adapter, unshielded, VDE, front fastened**

Area **Snap-In IP67 series 720**  
Part no. **08 2434 000 001**

**Authorization/approvals**

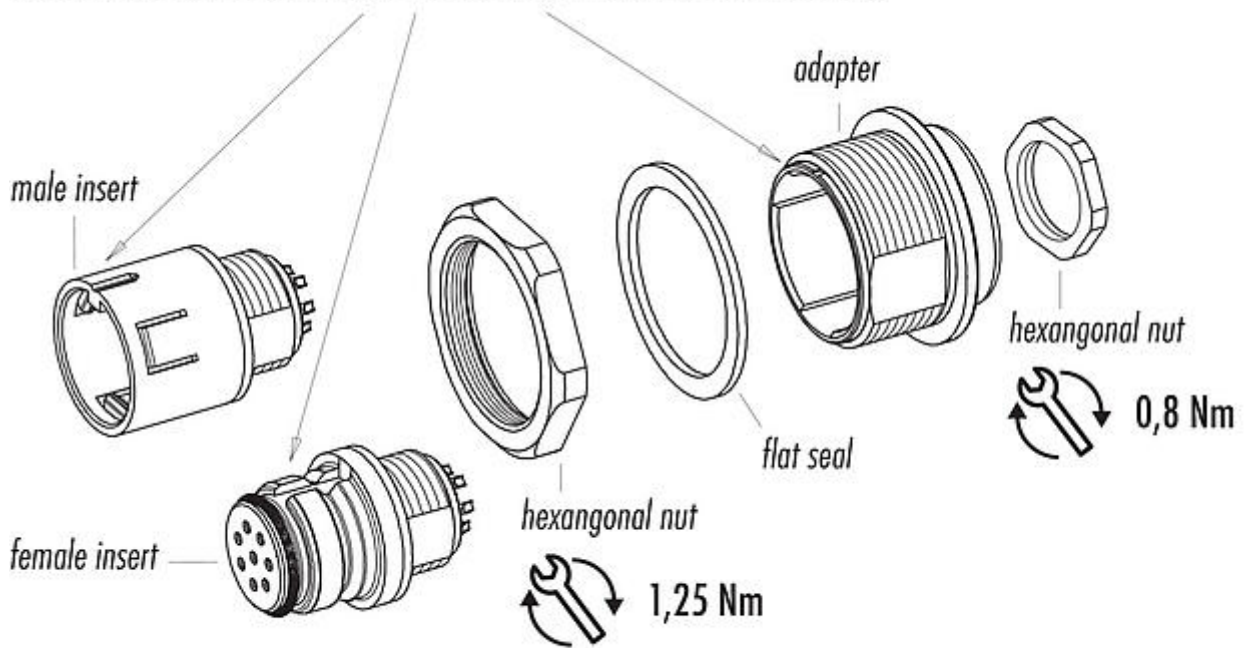
Approvals VDE

**Classifications**

eCl@ss 11.1 27-44-02-08  
ETIM 7.0 EC002314

**Assembly instructions**

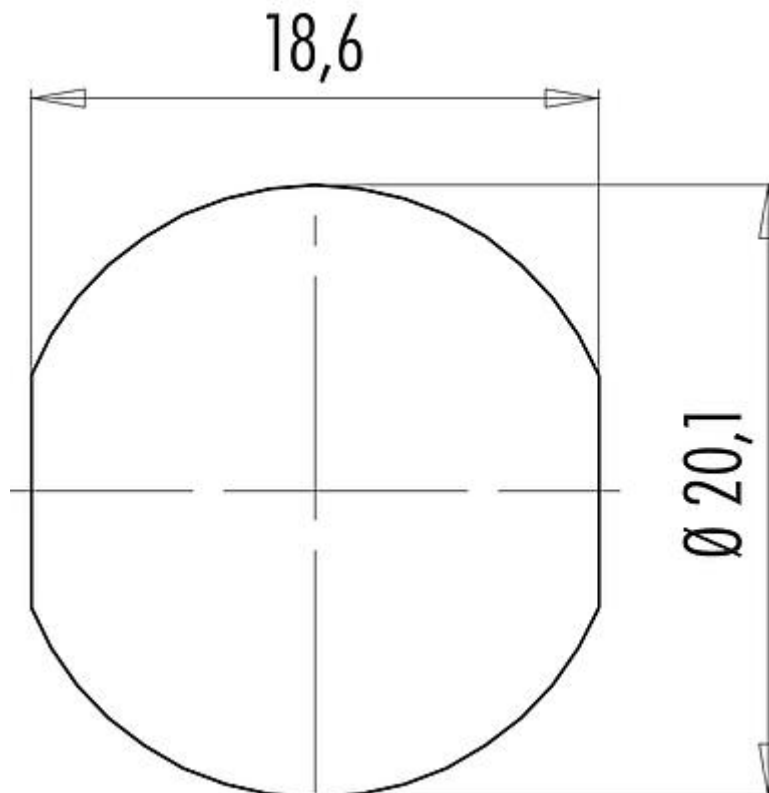
*The marking of the adapter must be conform with the coding nut of the insert*



*Inserts have to be ordered separately*

Product description	<b>Snap-In IP67 Adapter, unshielded, VDE, front fastened</b>
Area	<b>Snap-In IP67 series 720</b>
Part no.	<b>08 2434 000 001</b>

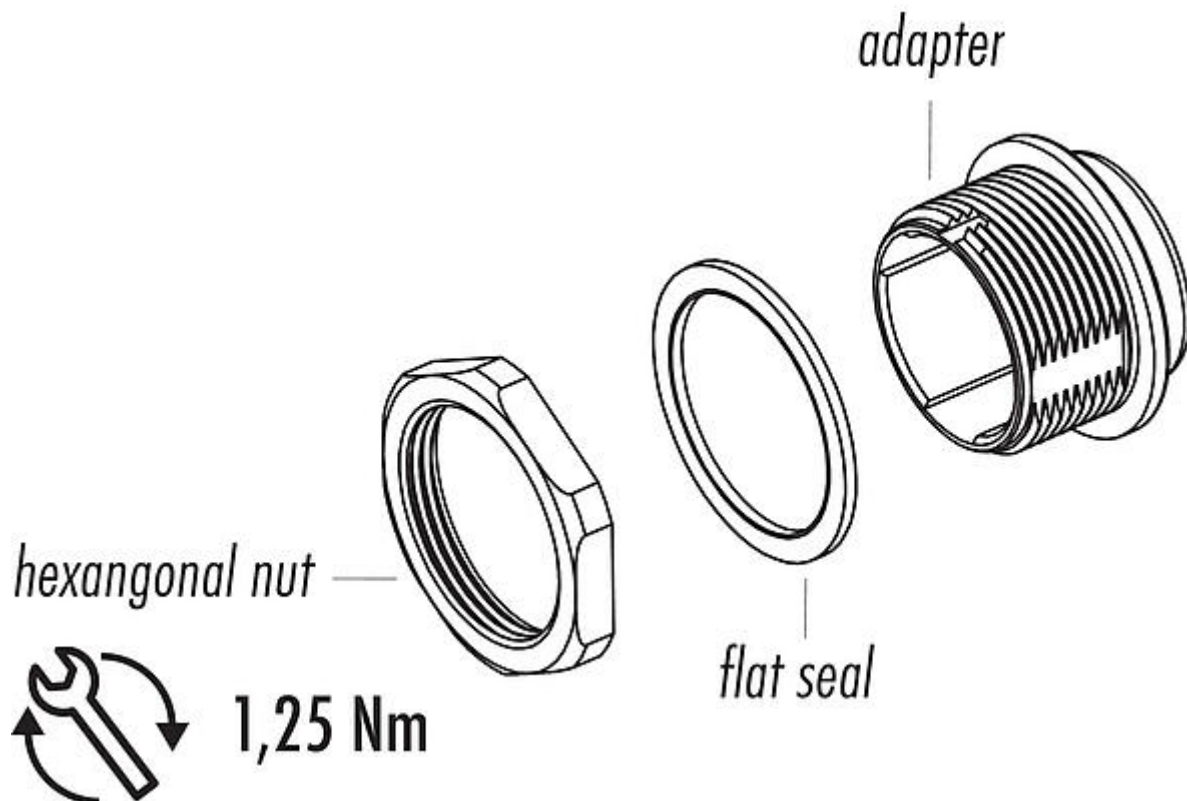
**Assembly instructions / Panel cut-out**



Product description **Snap-In IP67 Adapter, unshielded, VDE, front fastened**

Area **Snap-In IP67 series 720**  
Part no. **08 2434 000 001**

**Component part drawing**



# Product data sheet

## Miniature connectors



Product description	<b>Snap-In IP67 Adapter, unshielded, VDE, front fastened</b>
Area	<b>Snap-In IP67 series 720</b>
Part no.	<b>08 2434 000 001</b>

### Security notices

The connector must not be plugged or unplugged under load. Non-observance and improper use can result in personal injury.

The connectors have been developed for applications in plant engineering, control and electrical equipment construction. The user is responsible for checking whether the connectors can also be used in other areas of application.

