

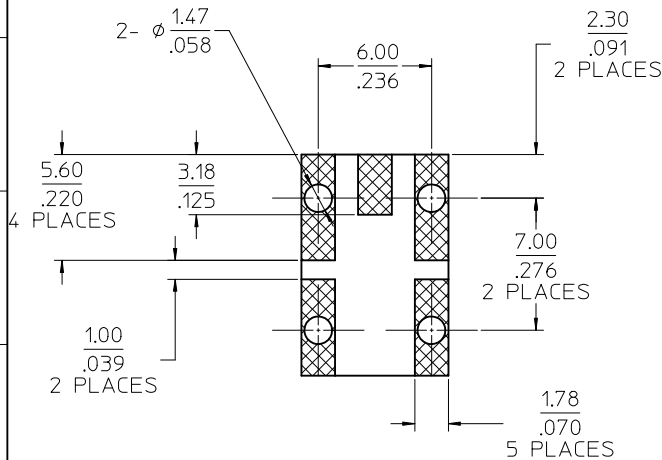
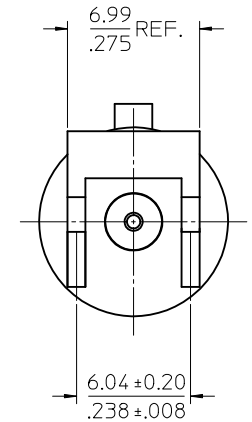
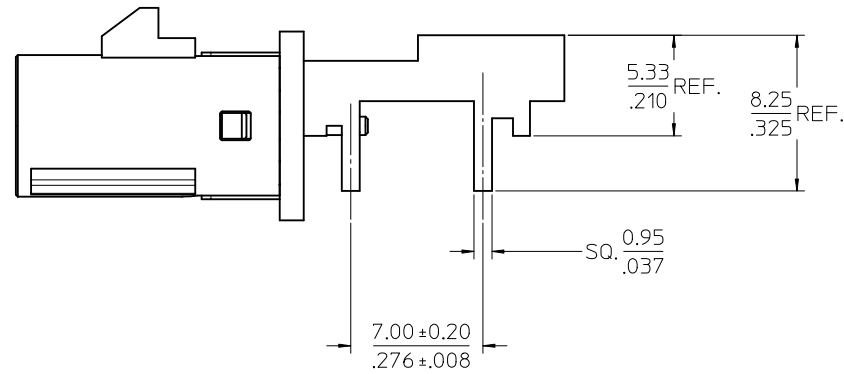
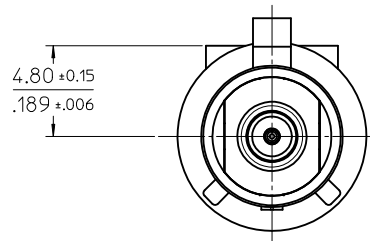
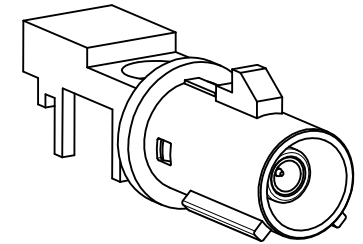
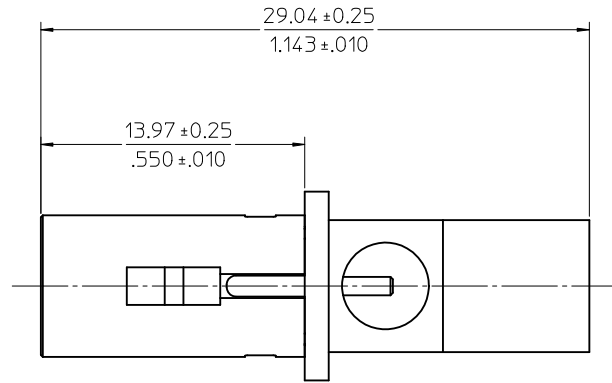
MATERIALS AND FINISHES

BODY ZINC ALLOY
PLATED TIN

CENTER CONTACT BRASS
PLATED GOLD

INSULATOR TEFLON

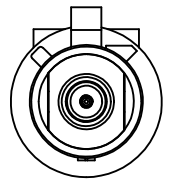
SHROUD NYLON 46 40%G.F.



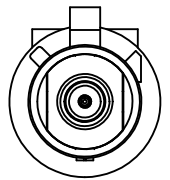
ADDED PACKAGE RF10-E112 EC NO: URF2010-0529 2010/03/19 DRW:ELIN 2005/10/24 CHK:PENNY 2010/03/29 APPR:HUANG REV: A1	QUALITY SYMBOLS ▽=0 ▽=0	GENERAL TOLERANCES (UNLESS SPECIFIED) <table border="1"> <tr> <th></th> <th>mm</th> <th>INCH</th> </tr> <tr> <td>4 PLACES</td> <td>± .13</td> <td>± .005</td> </tr> <tr> <td>3 PLACES</td> <td>± .15</td> <td>± .006</td> </tr> <tr> <td>2 PLACES</td> <td>± 0.13</td> <td>± .005</td> </tr> <tr> <td>1 PLACE</td> <td>± 0.25</td> <td>± .010</td> </tr> </table> ANGULAR ± 2 °		mm	INCH	4 PLACES	± .13	± .005	3 PLACES	± .15	± .006	2 PLACES	± 0.13	± .005	1 PLACE	± 0.25	± .010	DIMENSION STYLE MM/IN	SCALE 5:1	DESIGN UNITS METRIC	THIRD ANGLE PROJECTION
		mm	INCH																		
	4 PLACES	± .13	± .005																		
	3 PLACES	± .15	± .006																		
2 PLACES	± 0.13	± .005																			
1 PLACE	± 0.25	± .010																			
DRAWN BY EVITA 2005/10/24	DATE 2005/10/24	TITLE FAKRA MOUNT JACK FAKRA/J																			
CHECKED BY PENNY 2005/10/24	DATE 2005/10/24	APPROVED BY MHUANG 2010/03/26																			
MATERIAL NO. SEE SHEET 2	DOCUMENT NO. SD-73396-046	SHEET NO. 1 OF 3	MOLEX INCORPORATED																		

DRAFT WHERE APPLICABLE
MUST REMAIN
WITHIN DIMENSIONS

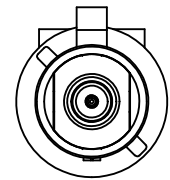
THIS DRAWING CONTAINS INFORMATION THAT IS PROPRIETARY TO MOLEX INCORPORATED AND SHOULD NOT BE USED WITHOUT WRITTEN PERMISSION



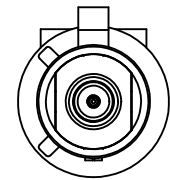
CODE - A



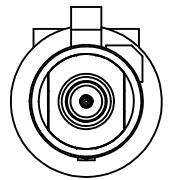
CODE - B



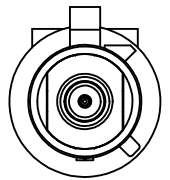
CODE - C



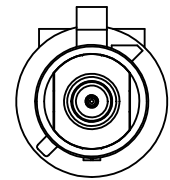
CODE - D



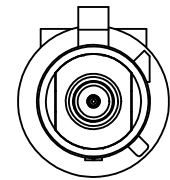
CODE - E



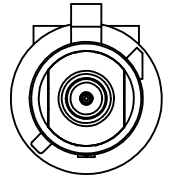
CODE - F



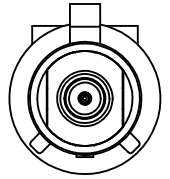
CODE - G



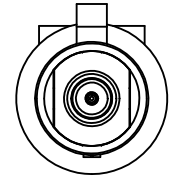
CODE - H



CODE - I



CODE - K



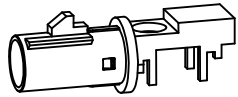
CODE - Z

Z	WATER BLUE	73396-0470
K	CURRY YELLOW	73396-0469
I	BEIGE	73396-0468
H	VIOLET	73396-0467
G	GRAY	73396-0466
F	BROWN	73396-0465
E	GREEN	73396-0464
D	BORDEAUXVIOLET	73396-0463
C	BLUE	73396-0462
B	CREAM WHITE	73396-0461
A	BLACK	73396-0460
KEYING CODE	COLOR	PART NO.

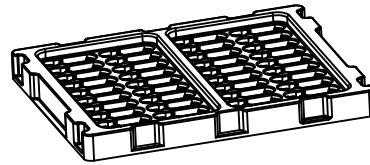
UNLESS OTHERWISE SPECIFIED DIMS ARE MILLIMETERS AND ANGLES ARE DEGREES.

- \sqrt{R} ALL OVER.
- NO CHATTER OR NON-UNIFORM SURFACE FINISH ALLOWED.
- PARTS TO BE FREE OF BURRS & SHARP EDGES 0.13(0.005) MAX BREAK.
- EXTERNAL THREADS TO BE ROLLED OR SINGLE POINT.
- DIAMETERS TO BE CONCENTRIC WITHIN 0.08(0.003) TIR.

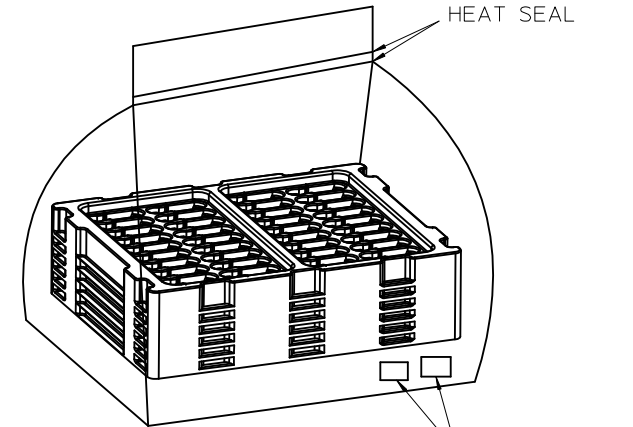
SEE SHEET 1 EC NO: URF-2010-0529 2010/03/19 DRW:LIN 2005/10/24 CHK:PENNY APPR:MHUANG 2010/03/29	QUALITY SYMBOLS ▽=0 ▽=0	GENERAL TOLERANCES (UNLESS SPECIFIED) <table border="1"> <tr> <th></th> <th>mm</th> <th>INCH</th> </tr> <tr> <td>4 PLACES</td> <td>± ---</td> <td>± ---</td> </tr> <tr> <td>3 PLACES</td> <td>± ---</td> <td>± ---</td> </tr> <tr> <td>2 PLACES</td> <td>± 0.13</td> <td>± ---</td> </tr> <tr> <td>1 PLACE</td> <td>± 0.25</td> <td>± ---</td> </tr> </table> ANGULAR ± 2 °		mm	INCH	4 PLACES	± ---	± ---	3 PLACES	± ---	± ---	2 PLACES	± 0.13	± ---	1 PLACE	± 0.25	± ---	DIMENSION STYLE MM/IN	SCALE 3:1	DESIGN UNITS METRIC	THIRD ANGLE PROJECTION
		mm	INCH																		
	4 PLACES	± ---	± ---																		
	3 PLACES	± ---	± ---																		
2 PLACES	± 0.13	± ---																			
1 PLACE	± 0.25	± ---																			
DRAWN BY EVITA DATE 2005/10/24	CHECKED BY PENNY DATE 2005/10/24	APPROVED BY MHUANG DATE 2010/03/26	TITLE FAKRA MOUNT JACK FAKRA/J																		
DRAFT WHERE APPLICABLE MUST REMAIN WITHIN DIMENSIONS			MATERIAL NO. SEE TABLE	MOLEX INCORPORATED																	
			SIZE C	DOCUMENT NO. SD-73396-046																	



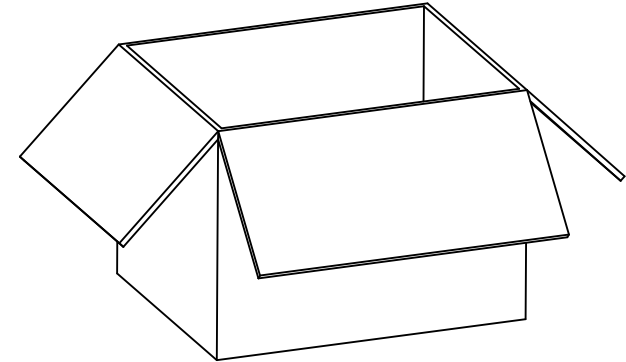
PART NO. 73396-046*



40 SET PER TYAY
TRAY P/N: 89707-0169



HDPE BAG



480 SET PER OUTER
CARTON BOX
P/N: 89499-9027

SEE SHEET 1 EC NO: URF2010-0529 2010/03/19 DRW:LIN 2005/10/24 CHK:PENNY 2010/03/29 APPR:MHUANG	QUALITY SYMBOLS ▼=0 ▽=0	GENERAL TOLERANCES (UNLESS SPECIFIED) <table border="1"> <tr> <td></td> <td>mm</td> <td>INCH</td> </tr> <tr> <td>4 PLACES</td> <td>± ---</td> <td>± ---</td> </tr> <tr> <td>3 PLACES</td> <td>± ---</td> <td>± ---</td> </tr> <tr> <td>2 PLACES</td> <td>± 0.13</td> <td>± ---</td> </tr> <tr> <td>1 PLACE</td> <td>± 0.25</td> <td>± ---</td> </tr> </table>		mm	INCH	4 PLACES	± ---	± ---	3 PLACES	± ---	± ---	2 PLACES	± 0.13	± ---	1 PLACE	± 0.25	± ---	DIMENSION STYLE MM/IN	SCALE 2:1	DESIGN UNITS METRIC	THIRD ANGLE PROJECTION
		mm	INCH																		
	4 PLACES	± ---	± ---																		
	3 PLACES	± ---	± ---																		
2 PLACES	± 0.13	± ---																			
1 PLACE	± 0.25	± ---																			
DESCRIPTION REV	DRAFT WHERE APPLICABLE MUST REMAIN WITHIN DIMENSIONS	DRAWN BY EVITA DATE 2005/10/24	CHECKED BY PENNY DATE 2005/10/24	TITLE FAKRA MOUNT JACK FAKRA/J																	
A1	ANGULAR ± 2 °	APPROVED BY MHUANG DATE 2010/03/26	MATERIAL NO. SEE SHEET 2	DOCUMENT NO. SD-73396-046	SHEET NO. 3 OF 3																
DRAFT WHERE APPLICABLE MUST REMAIN WITHIN DIMENSIONS			SIZE C	THIS DRAWING CONTAINS INFORMATION THAT IS PROPRIETARY TO MOLEX INCORPORATED AND SHOULD NOT BE USED WITHOUT WRITTEN PERMISSION																	