



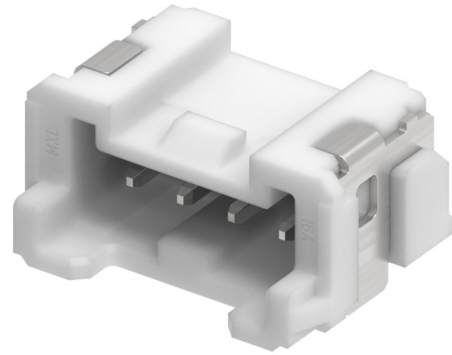
Part Number : [5055780470](#)

Product Description : 2.00mm Pitch, Micro-Lock Plus PCB Header, Single Row, Right-Angle, Surface Mount, Matte Tin Plating, Positive Lock, 4 Circuits, Low-Halogen, Natural (White)

Series Number : 505578

Status : Active

Product Category : PCB Headers and Receptacles



Documents & Resources

Drawings

[5055780470_sd.pdf](#)

3D Models and Design Files

[5055780470.dxf](#)

[5055780470.pdf](#)

[5055780470_stp.zip](#)

Specifications


[5055700001-A03.pdf](#)

[5055789200-200.pdf](#)

[5055701001-PS-000.pdf](#)

Product Environment Compliance

Compliance

| | |
|--------------------|---|
| GADSL/IMDS | Compliant with Exemption 44; 33 |
| China RoHS |  |
| EU ELV | Not Relevant |
| Low-Halogen Status | Low-Halogen per IEC 61249-2-21 |
| REACH SVHC | Not Contained per D(2024)6225-DC (07 Nov 2024) |
| EU RoHS | Compliant per EU 2015/863 |

Multiple Part Product Compliance Statements

- Eu RoHS
- REACH SVHC

- Low-Halogen

Multiple Part Industry Compliance Documents

- IPC 1752A Class C
- IPC 1752A Class D
- Molex Product Compliance Declaration
- IEC-62474
- chemSHERPA (xml)

EU RoHS Certificate of Compliance

Part Details

General

| | |
|----------------|--|
| Status | Active |
| Category | PCB Headers and Receptacles |
| Series | 505578 |
| Description | 2.00mm Pitch, Micro-Lock Plus PCB Header, Single Row, Right-Angle, Surface Mount, Matte Tin Plating, Positive Lock, 4 Circuits, Low-Halogen, Natural (White) |
| Application | Signal, Wire-to-Board |
| Component Type | PCB Header |
| Product Name | Micro-Lock Plus |
| UPC | 889056578417 |

Agency

| | |
|----|--------|
| UL | E29179 |
|----|--------|

Electrical

| | |
|-------------------------------|------------------|
| Current - Maximum per Contact | 3.4A |
| Voltage - Maximum | 250V AC (RMS)/DC |

Physical

| | |
|--------------------------------|-----------------|
| Breakaway | No |
| Circuits (Loaded) | 4 |
| Circuits (maximum) | 4 |
| Color - Resin | Natural (White) |
| Durability (mating cycles max) | 30 |

| | |
|--------------------------------|-----------------------|
| First Mate / Last Break | No |
| Flammability | 94V-0 |
| Glow-Wire Capable | No |
| Guide to Mating Part | No |
| Keying to Mating Part | Yes |
| Lock to Mating Part | Yes |
| Material - Metal | Brass |
| Material - Plating Mating | Matte Tin |
| Material - Plating Termination | Matte Tin |
| Material - Resin | Polyamide |
| Net Weight | 579.850/mg |
| Number of Rows | 1 |
| Orientation | Right Angle |
| Packaging Type | Embossed Tape on Reel |
| PCB Locator | No |
| PCB Retention | Yes |
| Pitch - Mating Interface | 2.00mm |
| Pitch - Termination Interface | 2.00mm |
| Plating min - Mating | 1.000µm |
| Plating min - Termination | 1.000µm |
| Polarized to Mating Part | Yes |
| Polarized to PCB | Yes |
| Robotic Placement | Vacuum Pick-Up Area |
| Shrouded | Fully |
| Stackable | No |
| Temperature Range - Operating | -40° to +105°C |
| Termination Interface Style | Surface Mount |

Mates With / Use With

Mates with Part(s)

| Description | Part Number |
|--|---------------|
| 2.00mm Pitch, Micro-Lock Plus Single Row Receptacle Housings | <u>505570</u> |

This document was generated on Feb 08, 2025