



NPVF

TE Internal #: 044782-000

TE Internal Description: NPVF050VT-100

[View on TE.com >](#)



### Product Compliance

[For compliance documentation, visit the product page on TE.com>](#)

EU RoHS Directive 2011/65/EU	Compliant
EU ELV Directive 2000/53/EC	Compliant
China RoHS 2 Directive MIIT Order No 32, 2016	No Restricted Materials Above Threshold
EU REACH Regulation (EC) No. 1907/2006	Current ECHA Candidate List: JUNE 2023 (235) Candidate List Declared Against: JUNE 2023 (235) Does not contain REACH SVHC
Halogen Content	Not Low Halogen - contains Br or Cl > 900 ppm.
Solder Process Capability	Not applicable for solder process capability

Product Compliance Disclaimer

This information is provided based on reasonable inquiry of our suppliers and represents our current actual knowledge based on the information they provided. This information is subject to change. The part numbers that TE has identified as EU RoHS compliant have a maximum concentration of 0.1% by weight in homogenous materials for lead, hexavalent chromium, mercury, PBB, PBDE, DBP, BBP, DEHP, DIBP, and 0.01% for cadmium, or qualify for an exemption to these limits as defined in the Annexes of Directive 2011/65/EU (RoHS2). Finished electrical and electronic equipment products will be CE marked as required by Directive 2011/65/EU. Components may not be CE marked. Additionally, the part numbers that TE has identified as EU ELV compliant have a maximum concentration of 0.1% by weight in homogenous materials for lead, hexavalent chromium, and mercury, and 0.01% for cadmium, or qualify for an exemption to these limits as defined in the Annexes of Directive 2000/53/EC (ELV). Regarding the REACH Regulation, the information TE provides on SVHC in articles for this part number is based on the latest European Chemicals Agency (ECHA) 'Guidance on requirements for substances in articles' posted at this URL: <https://echa.europa.eu/guidance-documents/guidance-on-reach>

### Also in the Series | NPVF

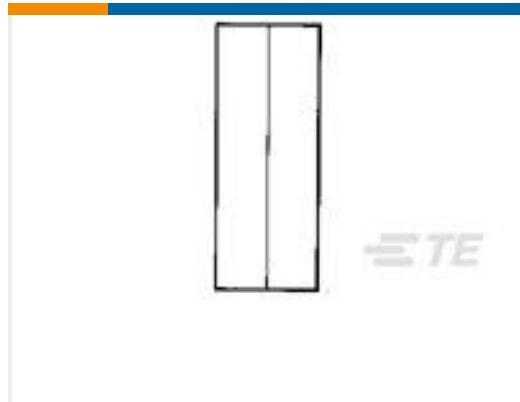


Standard Labels(6)

## Customers Also Bought



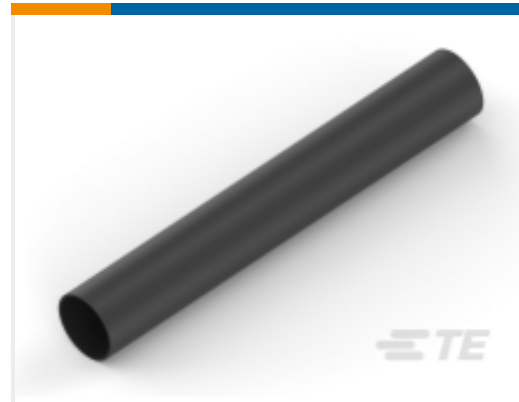
TE Part #38943-22L  
CONT SOC ASSY



TE Part #34130  
SPLICE,SOLIS PARA 22-16



TE Part #YDTS26W25-35PNV001  
PLUG ASSY



TE Part #NB10132001  
ATUM-24/6-0-STK



TE Part #0662-207-0082  
CONT SOC ASSY



TE Part #38941-16L  
CONT PIN



TE Part #F60687-000  
55A0812-8-96CS2654



TE Part #820457-000  
55PC2131-22-MST3-9CS2743



TE Part #EM0561-000  
55A0811-14-9CS3476



TE Part #EM0562-000  
55A0811-16-9CS3476

## Documents

### Datasheets & Catalog Pages

#### IDENTIFICATION SELECTION GUIDE

English

### Product Specifications

#### IDENTIFICATION PRINTER PRODUCT RIBBON MATRIX

English