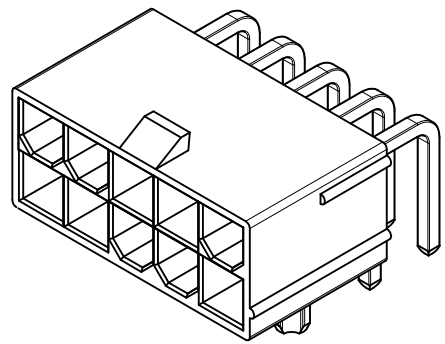


CIRCUIT SIZE	DIM. "A"	DIM. "B"	DIM. "C"	DIM. "D"
2	.606 (15.40)	N.A.	.213 (5.40)	.354 (9.00)
4	.772 (19.60)	.165 (4.20)	.378 (9.60)	.520 (13.20)
6	.937 (23.80)	.331 (8.40)	.543 (13.80)	.685 (17.40)
8	1.102 (28.00)	.496 (12.60)	.709 (18.00)	.850 (21.60)
10	1.268 (32.20)	.661 (16.80)	.874 (22.20)	1.016 (25.80)
12	1.433 (36.40)	.827 (21.00)	1.039 (26.40)	1.181 (30.00)
14	1.598 (40.60)	.992 (25.20)	1.205 (30.60)	1.346 (34.20)
16	1.764 (44.80)	1.157 (29.40)	1.370 (34.80)	1.512 (38.40)
18	1.929 (49.00)	1.323 (33.60)	1.535 (39.00)	1.677 (42.60)
20	2.094 (53.20)	1.488 (37.80)	1.701 (43.20)	1.843 (46.80)
22	2.260 (57.40)	1.654 (42.00)	1.866 (47.40)	2.008 (51.00)
24	2.425 (61.60)	1.819 (46.20)	2.031 (51.60)	2.173 (55.20)

- NOTES:
- MATERIALS:
 - HOUSING MATERIAL OPTIONS: SEE CHART FOR SPECIFIC PART
 - NYLON (PA66), UNFILLED, UL94V-2, COLOR: NATURAL
 - NYLON (PA66), UNFILLED, UL94V-2, COLOR: BLACK
 - NYLON (PA66), UNFILLED, UL94V-0, COLOR: NATURAL
 - NYLON (PA66), UNFILLED, UL94V-0, COLOR: BLACK
 - TERMINALS: BRASS
 - FINISH (PLATING) OPTIONS: SEE CHART FOR SPECIFIC PART
 - *TIN* = 0.00508/(.000200) MIN. BRIGHT TIN OVER
0.00254/(.000100) MIN. COPPER
 - *G* = 0.00076/(.000030) MIN. GOLD OVER
0.00127/(.000050) MIN. NICKEL
 - *GS* = 0.00076/(.000030) MIN. SELECT GOLD AND
0.00254/(.0000100) SELECT MATTE TIN OVER
0.00127/(.000050) MIN. NICKEL
 - *S* = 0.00254/(.000100) MIN. BRIGHT TIN OVER
0.00127/(.000050) MIN. NICKEL
 - *MS* = 0.00254/(.000100) MIN. MATTE TIN OVER
0.00127/(.000050) MIN. NICKEL
 - *RM* = 0.00152/(.000060) MIN. REFLOWED MATTE TIN OVER
0.00127/(.000050) MIN. NICKEL OVERALL
 - PRODUCT SPECIFICATION: PS-5556-001
 - PACKAGING: SEE CHART: BULK PER PK-5569-002
TRAY PER PK-5569-003

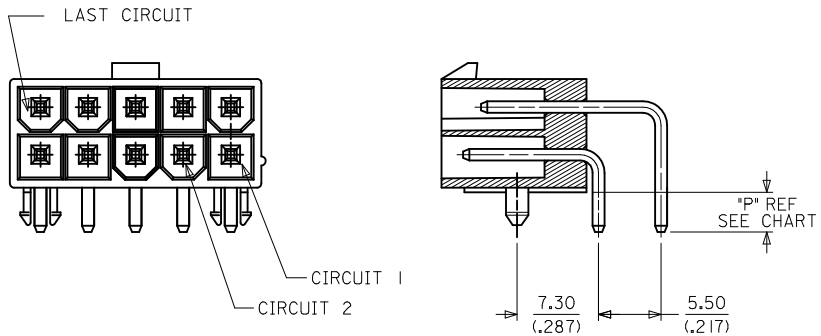
- CIRCUITS SHOWN PROVIDE THE MAKE-FIRST/BREAK-LAST FEATURE. SEE CHART ON SHEET 3 FOR SPECIFIC CIRCUIT LOCATIONS.
- PART MATES WITH MINI-FIT JR. RECEPTACLE #5557.
- CONNECTORS ARE NOT TO BE MATED OR UNMATED WHILE CIRCUITS ARE LIVE.
- PARTS ARE NOT DESIGNED FOR CURRENT SHARING.
- DISCOLORATION IN THE BANDOLIER CARRIER AREA OF THE PIN IS INHERENT TO THE PLATING PROCESS AND IS DUE TO THE MASKING EFFECT OF THE CARRIER. THIS DISCOLORATION, IF PRESENT, IS IN A NON-FUNCTIONAL AREA OF THE PIN AND WILL NOT EFFECT THE PERFORMANCE OF THE HEADER ASSEMBLY.
- PART CONFORMS TO CLASS "B" REQUIREMENTS OF COSMETIC SPECIFICATION PS-45499-002.



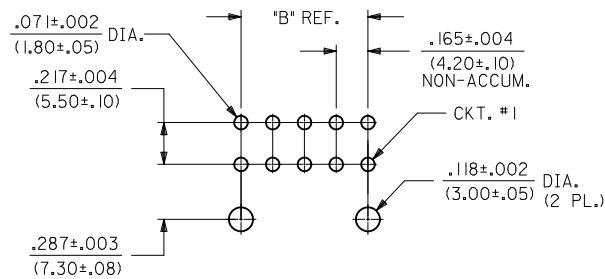
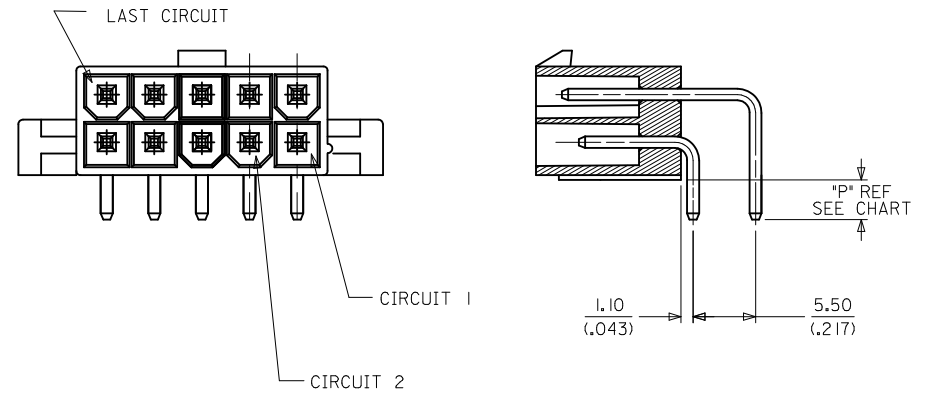
ADD -0032 EC NO: UCP2012-1103 DRW: NGUYEN 2011/10/07 CHKD: BELL 2011/10/07 APPR: FSMITH 2011/10/11	DESCRIPTION QUALITY SYMBOLS ▽=0 ▽=0 ▽=0	GENERAL TOLERANCES (UNLESS SPECIFIED)		DIMENSION STYLE MM/IN		SCALE 4:1	DESIGN UNITS METRIC	THIRD ANGLE PROJECTION		
		4 PLACES ± --- ± --- 3 PLACES ± --- ± .15 2 PLACES ± 0.38 ± --- 1 PLACE ± --- ± ---	mm INCH	DRAWN BY POLGAR	DATE 1998/01/23	TITLE MINI-FIT JR RIGHT ANGLE HEADER ASSY CUSTOM HEADERS				
		ANGULAR ±1/2°		CHECKED BY BANDURA	DATE 1998/01/28	APPROVED BY FSMITH		DATE 2011/05/18	MOLEX INCORPORATED	
		DRAFT WHERE APPLICABLE MUST REMAIN WITHIN DIMENSIONS		MATERIAL NO. SEE CHART		DOCUMENT NO. SD-44130-001		SHEET NO. 1 OF 4		

THIS DRAWING CONTAINS INFORMATION THAT IS PROPRIETARY TO MOLEX INCORPORATED AND SHOULD NOT BE USED WITHOUT WRITTEN PERMISSION

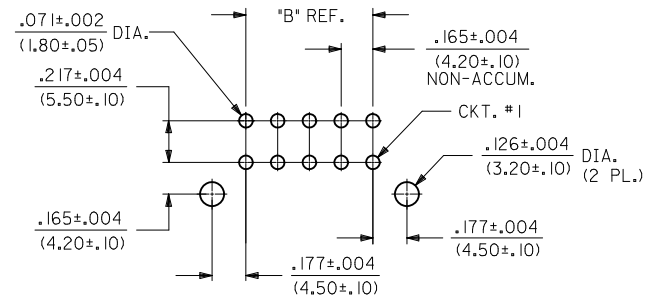
ASSEMBLY TYPE A
HOUSING WITH PEGS



ASSEMBLY TYPE B
HOUSING WITH FLANGE



RECOMMENDED HOLE LAYOUT FOR
.070/(1.78) MAX. THICK P.C. BOARD.
(PEG MOUNT)



RECOMMENDED HOLE LAYOUT FOR
.070/(1.78) MAX. THICK P.C. BOARD.
(FLANGE MOUNT)

SEE SHEET 1 EC NO: UCP2012-1103 DRAWN: NGUYEN 2011/10/07 CHKD: J.BELL 2011/10/07 APPR: F.SMITH 2011/10/11 D9	QUALITY SYMBOLS	GENERAL TOLERANCES (UNLESS SPECIFIED)	DIMENSION STYLE	SCALE	DESIGN UNITS	THIRD ANGLE PROJECTION
	▽=0	mm INCH	MM/IN	4:1	METRIC	
	▽=0	4 PLACES ± --- ± ---	DRAWN BY POLGAR DATE 1998/01/23	MINI-FIT JR RIGHT ANGLE HEADER ASSY CUSTOM HEADERS MOLEX INCORPORATED		
	▽=0	3 PLACES ± --- ± .15	CHECKED BY BANDURA DATE 1998/01/28			
	2 PLACES ± 0.38 ± ---	APPROVED BY F.SMITH DATE 2011/05/18	MATERIAL NO.	DOCUMENT NO.	SHEET NO.	
	1 PLACE ± --- ± ---	ANGULAR ±1/2°	SEE CHART	SD-44130-001	2 OF 4	
DRAFT WHERE APPLICABLE MUST REMAIN WITHIN DIMENSIONS		THIS DRAWING CONTAINS INFORMATION THAT IS PROPRIETARY TO MOLEX INCORPORATED AND SHOULD NOT BE USED WITHOUT WRITTEN PERMISSION				

