

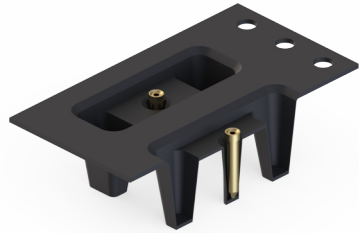
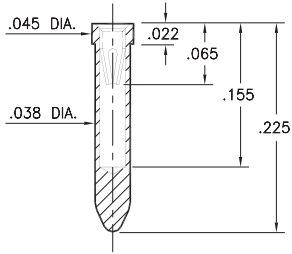
PIN RECEPTACLES

**FOR .012" - .017" DIAMETER PINS
RECEPTACLES ON TAPE & REEL PACKAGING**

8947

8947-0-57-XX-10-XX-10-0

Solder mount in .040 min. mounting hole
24mm wide X 8mm pitch carrier tape:
1,350 parts per 13" reel.



SPECIFICATIONS:

Shell Material: Brass Alloy 360, 1/2 Hard

Contact Material: Beryllium Copper Alloy 172, HT

Dimensions: Inches

Tolerances On: Lengths: $\pm .005$

Diameters: $\pm .002$

Angles: $\pm 2^\circ$



ORDER CODE: XXXX - X - XX - XX - XX - XX - 0

BASIC PART #

SPECIFY SHELL FINISH:

01 200 μ " TIN/LEAD OVER NICKEL

◆ **80** 200 μ " TIN OVER NICKEL (RoHS)

◆ **15** 10 μ " GOLD OVER NICKEL (RoHS)

SPECIFY CONTACT FINISH:

02 100 μ " TIN/LEAD OVER NICKEL

◆ **84** 100 μ " TIN OVER NICKEL (RoHS)

◆ **27** 30 μ " GOLD OVER NICKEL (RoHS)

SELECT CONTACT:

#10 CONTACT (DATA ON PAGE 250)
(NO alternate contact choices available)

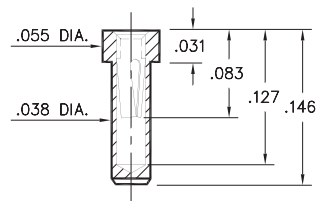
PIN RECEPTACLES

**FOR .015" - .020" DIAMETER PINS (#11 CONTACT)
FOR .015" - .022" DIAMETER PINS (#21 CONTACT)
RECEPTACLES ON TAPE & REEL PACKAGING**

1407

1407-0-57-XX-11-XX-10-0

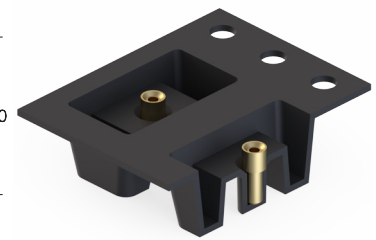
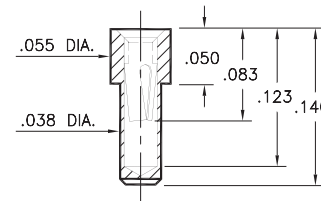
Solder mount in .040 min. mounting hole
16mm wide X 8mm pitch carrier tape:
1,500 parts per 13" reel.



0569

0569-0-57-XX-X1-XX-10-0

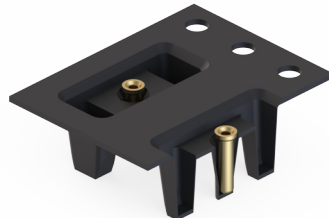
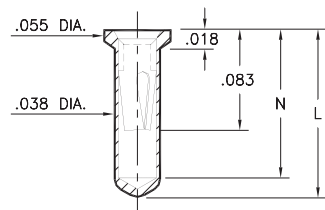
Solder mount in .040 min. mounting hole
16mm wide X 8mm pitch carrier tape:
2,000 parts per 13" reel.



0552

0552-X-57-XX-X1-XX-10-0

Solder mount in .040 min. mounting hole
16mm wide X 8mm pitch carrier tape:
1,500 parts per 13" reel.

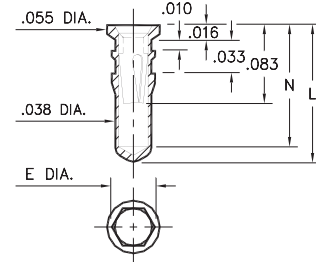


Basic Part Number	Length L	Depth N
0552-1	.136	.120
0552-2	.170	.150

0553

0553-2-57-XX-11-XX-10-0

Hex press-fit in .041 plated through-hole
16mm wide X 8mm pitch carrier tape:
1,580 parts per 13" reel.

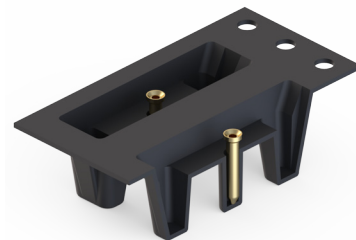
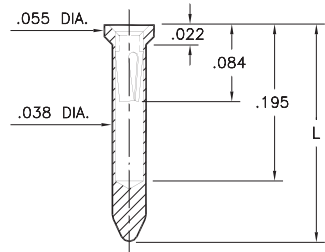


Basic Part Number	Hex Dia. E	Length L	Depth N
0553-1	.044	.140	.124
0553-2	.044	.170	.154
0553-3	.044	.282	.266

8579

8579-X-57-XX-X1-XX-10-0

Solder mount in .040 min. mounting hole
24mm wide X 8mm pitch carrier tape:
See chart for Tape & Reel Qtys.



Basic Part Number	Length L
8579-0	.234
8579-1	.295

T&R Packaging

Basic Part Number	Tape Width	Parts per 13" Reel
8579-0	24mm	1,200
8579-1	24mm	1,000

SPECIFICATIONS:

Shell Material: Brass Alloy 360, 1/2 Hard

Contact Material: Beryllium Copper Alloy 172, HT

Dimensions: Inches

Tolerances On: Lengths: ±.005
Diameters: ±.002
Angles: ± 2°



ORDER CODE: XXXX - X - XX - XX - XX - XX - 0

BASIC PART #

SPECIFY SHELL FINISH:

- 01 200 μ" TIN/LEAD OVER NICKEL
- ◆ 80 200 μ" TIN OVER NICKEL (RoHS)
- ◆ 15 10 μ" GOLD OVER NICKEL (RoHS)

SPECIFY CONTACT FINISH:

- 02 100 μ" TIN/LEAD OVER NICKEL
- ◆ 84 100 μ" TIN OVER NICKEL (RoHS)
- ◆ 27 30 μ" GOLD OVER NICKEL (RoHS)

SELECT CONTACT:

#11 or #21 CONTACT (DATA ON PAGE 251)

(For alternate contact choices, see group A on page 248)

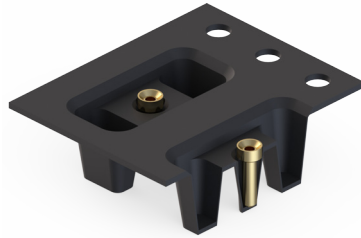
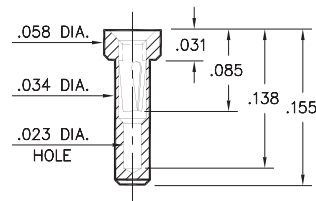
PIN RECEPTACLES

FOR .015" - .022" DIAMETER PINS
RECEPTACLES ON TAPE & REEL PACKAGING

0548

0548-0-57-XX-21-XX-10-0

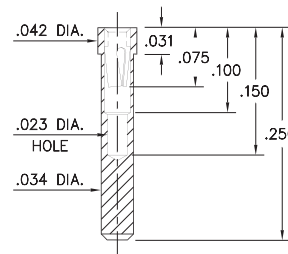
Solder mount in .036 min. mounting hole
16mm wide X 8mm pitch carrier tape:
1,900 parts per 13" reel.



8975

8975-0-57-XX-21-XX-10-0

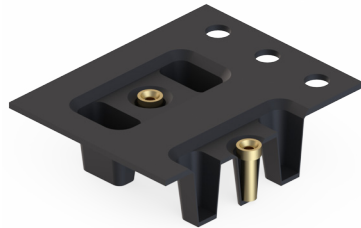
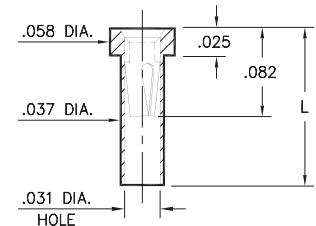
Solder mount in .036 min. mounting hole
24mm wide X 8mm pitch carrier tape:
1,200 parts per 13" reel.



0566

0566-X-57-XX-21-XX-10-0

Solder mount in .039 min. mounting hole
16mm wide X 8mm pitch carrier tape:
See chart for details.

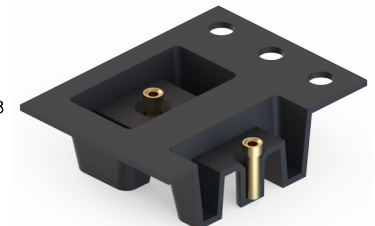
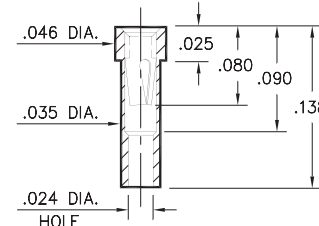


Basic Part Number	Length L	Parts per 13" Reel
0566-1	.083	3,000
0566-2	.138	2,100

8637

8637-0-57-XX-21-XX-10-0

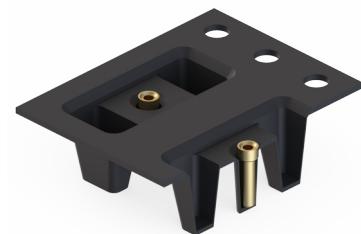
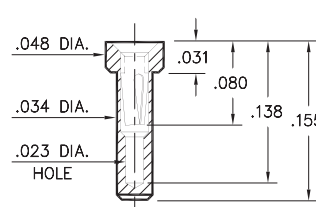
Solder mount in .037 min. mounting hole
16mm wide X 8mm pitch carrier tape:
2,000 parts per 13" reel.



3016

3016-0-57-XX-21-XX-10-0

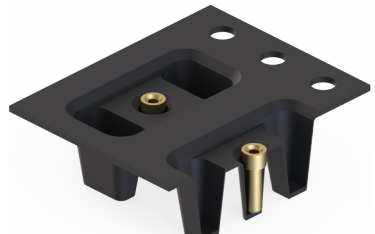
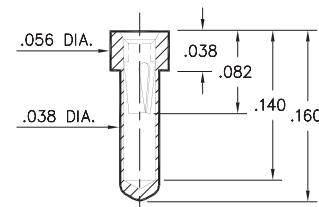
Solder mount in .036 min. mounting hole
16mm wide X 8mm pitch carrier tape:
1,900 parts per 13" reel.



0554

0554-0-57-XX-21-XX-10-0

Solder mount in .040 min. mounting hole
16mm wide X 8mm pitch carrier tape:
1,850 parts per 13" reel.



SPECIFICATIONS:

Shell Material: Brass Alloy 360, 1/2 Hard

Contact Material: Beryllium Copper Alloy 172, HT

Dimensions: Inches

Tolerances On: Lengths: $\pm .005$
Diameters: $\pm .002$
Angles: $\pm 2^\circ$



ORDER CODE: XXXX - X - XX - XX - XX - XX - XX - 0

BASIC PART #

SPECIFY SHELL FINISH:

- 01 200 μ " TIN/LEAD OVER NICKEL
- ◆ 80 200 μ " TIN OVER NICKEL (RoHS)
- ◆ 15 10 μ " GOLD OVER NICKEL (RoHS)

SPECIFY CONTACT FINISH:

- 02 100 μ " TIN/LEAD OVER NICKEL
- ◆ 84 100 μ " TIN OVER NICKEL (RoHS)
- ◆ 27 30 μ " GOLD OVER NICKEL (RoHS)

SELECT CONTACT:

#21 CONTACT (DATA ON PAGE 251)

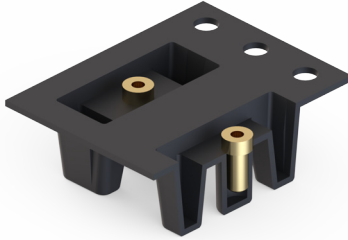
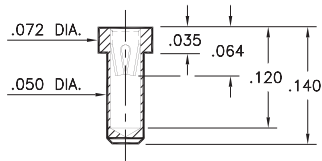
(Contact may be interchanged with group A, B & C contact on page 248)

PIN RECEPTACLES

**FOR .015" - .022" DIAMETER PINS
RECEPTACLES ON TAPE & REEL PACKAGING**

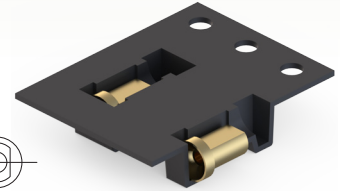
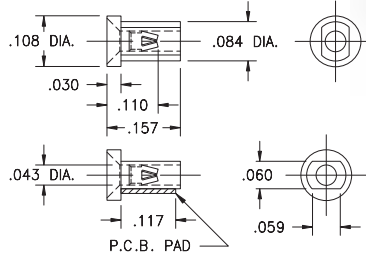
0550 * 0550-0-57-XX-22-XX-10-0

Solder mount in .052 min. mounting hole
16mm wide X 8mm pitch carrier tape:
1,700 parts per 13" reel.

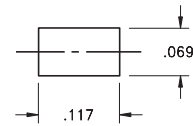


5739 * 5739-0-58-XX-12-XX-10-0

Surface mount
16mm wide X 8mm pitch carrier tape:
3,000 parts per 13" reel.



P.C.B. Layout



SPECIFICATIONS:

Shell Material: Brass Alloy 360, 1/2 Hard

Contact Material: Beryllium Copper Alloy 172, HT

Dimensions: Inches

Tolerances On: Lengths: ±.005

Diameters: ±.002

Angles: ± 2°



ORDER CODE: XXXX - X - XX - XX - XX - XX - XX - 0

BASIC PART #

SPECIFY SHELL FINISH:

- 01 200 μ" TIN/LEAD OVER NICKEL
- ◆ 80 200 μ" TIN OVER NICKEL (RoHS)
- ◆ 15 10 μ" GOLD OVER NICKEL (RoHS)

SPECIFY CONTACT FINISH:

- 02 100 μ" TIN/LEAD OVER NICKEL
- ◆ 84 100 μ" TIN OVER NICKEL (RoHS)
- ◆ 27 30 μ" GOLD OVER NICKEL (RoHS)

SELECT CONTACT:

#12 or #22 CONTACT (DATA ON PAGE 252)

* (Contact may be interchanged with group B or C contact on page 248)

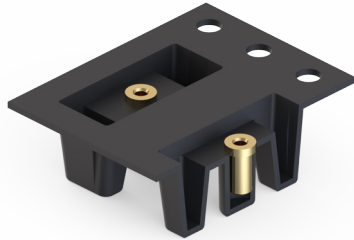
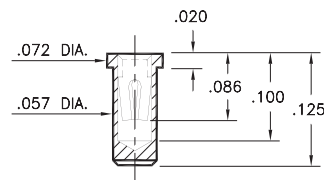
PIN RECEPTACLES

FOR .015" - .025" DIAMETER PINS RECEPTACLES ON TAPE & REEL PACKAGING

0669

0669-0-57-XX-30-XX-10-0

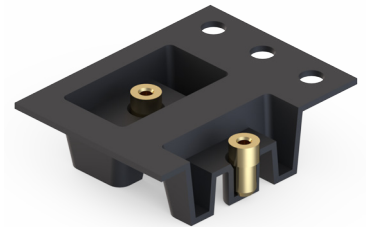
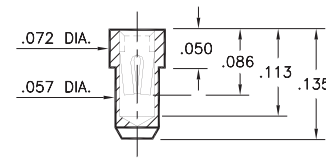
Solder mount in .060 min. mounting hole
16mm wide X 8mm pitch carrier tape:
1,700 parts per 13" reel.



0670

0670-0-57-XX-30-XX-10-0

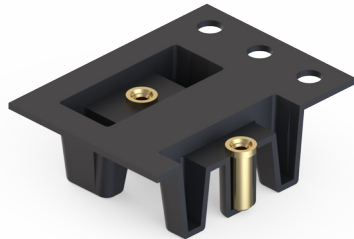
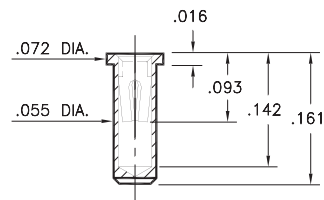
Solder mount in .060 min. mounting hole
16mm wide X 8mm pitch carrier tape:
2,000 parts per 13" reel.



0667

0667-0-57-XX-30-XX-10-0

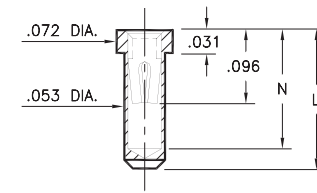
Solder mount in .057 min. mounting hole
16mm wide X 8mm pitch carrier tape:
1,700 parts per 13" reel.



1401/3185

XXXX-0-57-XX-30-XX-10-0

Solder mount in .055 min. mounting hole
16mm wide X 8mm pitch carrier tape:
1,700 parts per 13" reel.

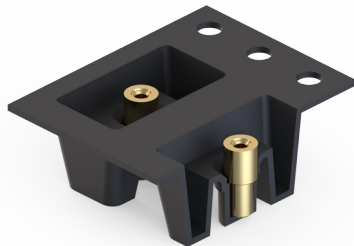
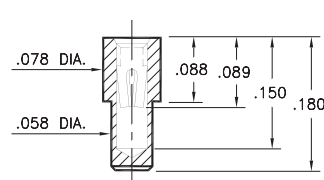


Basic Part Number	Length L	Depth N
1401-0	.165	.145
3185-0	.130	.109

0665

0665-0-57-XX-30-XX-10-0

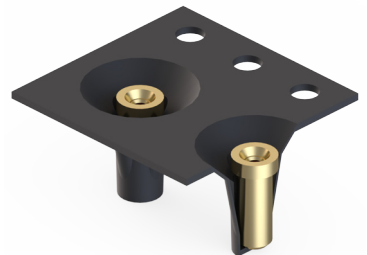
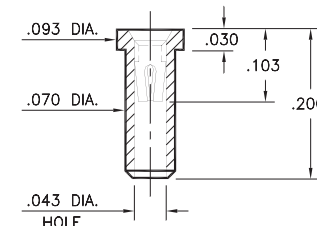
Solder mount in .061 min. mounting hole
16mm wide X 8mm pitch carrier tape:
1,580 parts per 13" reel.



0341

0341-0-57-XX-30-XX-10-0

Solder mount in .073 min. mounting hole
12mm wide X 8mm pitch carrier tape:
1,400 parts per 13" reel.



SPECIFICATIONS:

Shell Material: Brass Alloy 360, 1/2 Hard

Contact Material: Beryllium Copper Alloy 172, HT

Dimensions: Inches

Tolerances On: Lengths: ±.005

Diameters: ±.002

Angles: ±2°



ORDER CODE: XXXX - X - XX - XX - XX - XX - XX - 0

BASIC PART #

SPECIFY SHELL FINISH:

- 01 200 μ" TIN/LEAD OVER NICKEL
- ◆ 80 200 μ" TIN OVER NICKEL (RoHS)
- ◆ 15 10 μ" GOLD OVER NICKEL (RoHS)

SPECIFY CONTACT FINISH:

- 02 100 μ" TIN/LEAD OVER NICKEL
- ◆ 84 100 μ" TIN OVER NICKEL (RoHS)
- ◆ 27 30 μ" GOLD OVER NICKEL (RoHS)

SELECT CONTACT:

#30 CONTACT (DATA ON PAGE 253)

(For alternate contact choices, see group B & C on page 248)

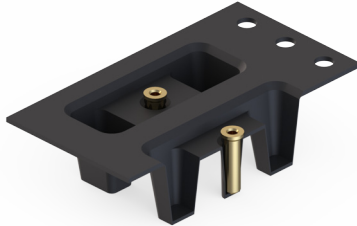
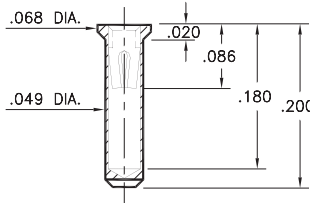
PIN RECEPTACLES

**FOR .015" - .025" DIAMETER PINS
RECEPTACLES ON TAPE & REEL PACKAGING**

0660

0660-0-57-XX-30-XX-10-0

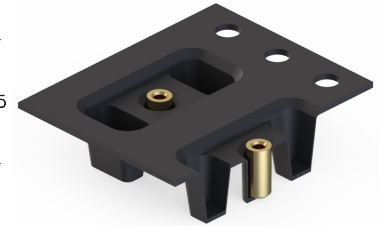
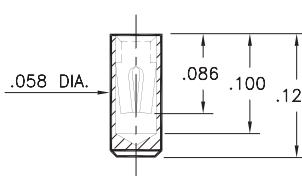
Solder mount in .051 min. mounting hole
24mm wide X 8mm pitch carrier tape:
1,500 parts per 13" reel.



0673

0673-0-57-XX-30-XX-10-0

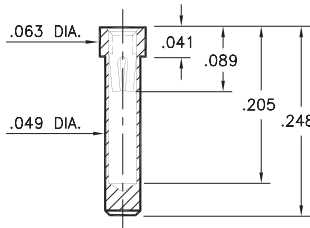
Surface mount
16mm wide X 8mm pitch carrier tape:
2,300 parts per 13" reel.



0677

0677-0-57-XX-30-XX-10-0

Solder mount in .051 min. mounting hole
24mm wide X 8mm pitch carrier tape:
1,200 parts per 13" reel.



SPECIFICATIONS:

Shell Material: Brass Alloy 360, 1/2 Hard

Contact Material: Beryllium Copper Alloy 172, HT

Dimensions: Inches

Tolerances On: Lengths: ±.005

Diameters: ±.002

Angles: ± 2°



ORDER CODE: XXXX - X - XX - XX - XX - XX - XX - 0

BASIC PART #

SPECIFY SHELL FINISH:

01 200 μ" TIN/LEAD OVER NICKEL

◆ 80 200 μ" TIN OVER NICKEL (RoHS)

◆ 15 10 μ" GOLD OVER NICKEL (RoHS)

SPECIFY CONTACT FINISH:

02 100 μ" TIN/LEAD OVER NICKEL

◆ 84 100 μ" TIN OVER NICKEL (RoHS)

◆ 27 30 μ" GOLD OVER NICKEL (RoHS)

SELECT CONTACT:

#30 CONTACT (DATA ON PAGE 253)

(For alternate contact choices, see group B & C on page 248)

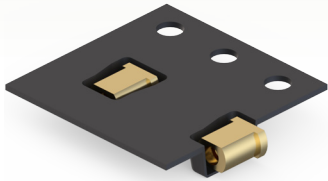
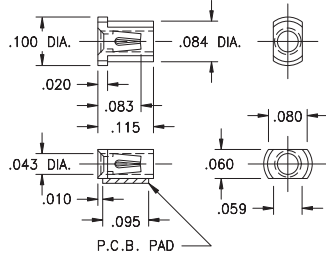
PIN RECEPTACLES

FOR .015" - .025" DIAMETER PINS
RECEPTACLES ON TAPE & REEL PACKAGING

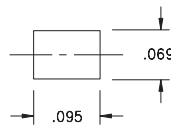
3907

3907-0-58-XX-30-XX-10-0

Surface mount
12mm wide X 8mm pitch carrier tape:
4,000 parts per 13" reel.



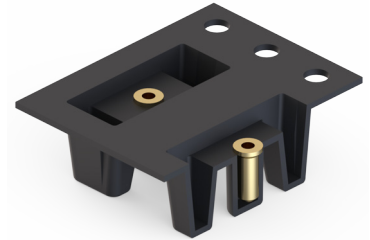
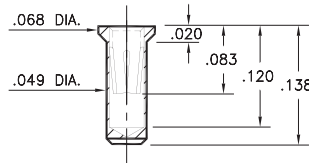
P.C.B. Layout



0680

0680-0-57-XX-32-XX-10-0

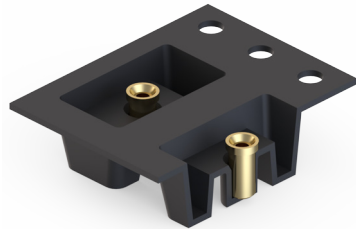
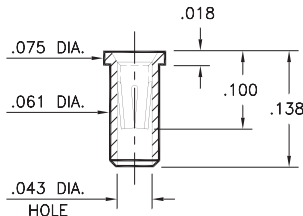
Solder mount in .051 min. mounting hole
16mm wide X 8mm pitch carrier tape:
1,700 parts per 13" reel.



0666

0666-0-57-XX-32-XX-10-0

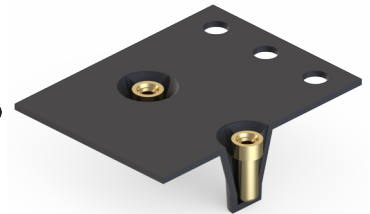
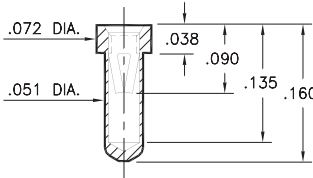
Solder mount in .064 min. mounting hole
16mm wide X 8mm pitch carrier tape:
2,000 parts per 13" reel.



0555

0555-0-57-XX-32-XX-10-0

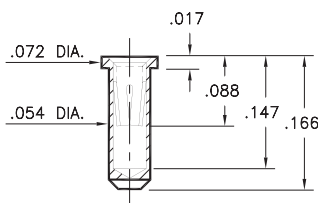
Solder mount in .053 min. mounting hole
16mm wide X 8mm pitch carrier tape:
1,800 parts per 13" reel.



0682

0682-0-57-XX-32-XX-10-0

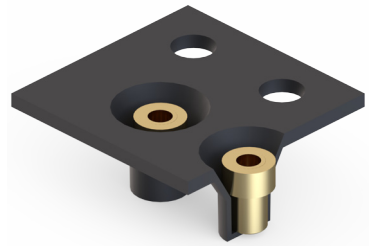
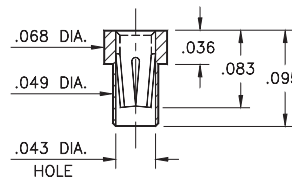
Solder mount in .056 min. mounting hole
16mm wide X 8mm pitch carrier tape:
1,500 parts per 13" reel.



5342

5342-0-57-XX-35-XX-10-0

Solder mount in .051 min. mounting hole
8mm wide X 8mm pitch carrier tape:
6,000 parts per 13" reel.



SPECIFICATIONS:

Shell Material: Brass Alloy 360, 1/2 Hard

Contact Material: Beryllium Copper Alloy 172, HT

Dimensions: Inches

Tolerances On: Lengths: ±.005

Diameters: ±.002

Angles: ±2°



ORDER CODE: XXXX - X - XX - XX - XX - XX - XX - 0

BASIC PART #

SPECIFY SHELL FINISH:

- 01 200 μ" TIN/LEAD OVER NICKEL
- ◆ 80 200 μ" TIN OVER NICKEL (RoHS)
- ◆ 15 10 μ" GOLD OVER NICKEL (RoHS)

SPECIFY CONTACT FINISH:

- 02 100 μ" TIN/LEAD OVER NICKEL
- ◆ 84 100 μ" TIN OVER NICKEL (RoHS)
- ◆ 27 30 μ" GOLD OVER NICKEL (RoHS)

SELECT CONTACT:

#30, #32 or #35 CONTACT (DATA ON PAGE 253 & 254)
(For alternate contact choices, see group B & C on page 248)

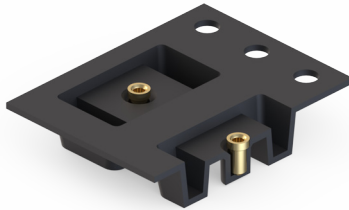
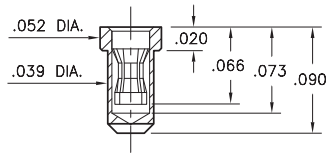
PIN RECEPTACLES

FOR .018" - .023" DIAMETER PINS
RECEPTACLES ON TAPE & REEL PACKAGING

0507

0507-0-57-XX-31-XX-10-0

Solder mount in .042 min. mounting hole
16mm wide X 8mm pitch carrier tape:
3,000 parts per 13" reel.



SPECIFICATIONS:

Shell Material: Brass Alloy 360, 1/2 Hard

Contact Material: Beryllium Copper Alloy 172, HT

Dimensions: Inches

Tolerances On: Lengths: ±.005

Diameters: ±.002

Angles: ± 2°



ORDER CODE: XXXX - X - XX - XX - XX - XX - XX - 0

BASIC PART #

SPECIFY SHELL FINISH:

- 01 200 μ" TIN/LEAD OVER NICKEL
- ◆ 80 200 μ" TIN OVER NICKEL (RoHS)
- ◆ 15 10 μ" GOLD OVER NICKEL (RoHS)

SPECIFY CONTACT FINISH:

- 01 200 μ" TIN/LEAD OVER NICKEL
- ◆ 80 200 μ" TIN OVER NICKEL (RoHS)
- ◆ 27 30 μ" GOLD OVER NICKEL (RoHS)

SELECT CONTACT:

#31 CONTACT

(For alternate contact choices, see group A on page 248)

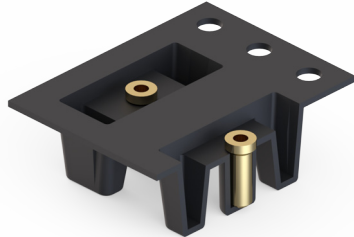
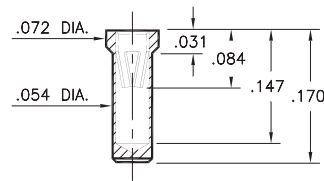
PIN RECEPTACLES

**FOR .020" - .032" DIAMETER PINS
RECEPTACLES ON TAPE & REEL PACKAGING**

0338

0338-0-57-XX-15-XX-10-0

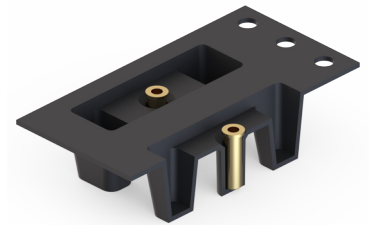
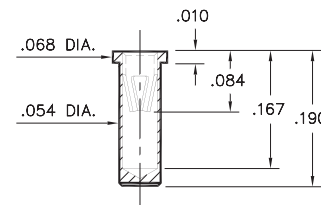
Solder mount in .057 min. mounting hole
16mm wide X 8mm pitch carrier tape:
1,700 parts per 13" reel.



0339

0339-0-57-XX-15-XX-10-0

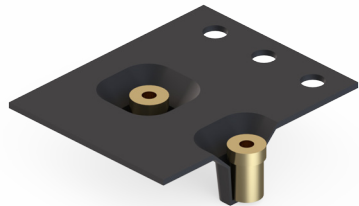
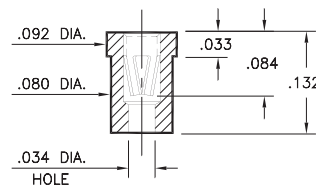
Solder mount in .057 min. mounting hole
24mm wide X 8mm pitch carrier tape:
1,540 parts per 13" reel.



0378

0378-0-57-XX-15-XX-10-0

Solder mount in .082 min. mounting hole
16mm wide X 8mm pitch carrier tape:
2,200 parts per 13" reel.



SPECIFICATIONS:

Shell Material: Brass Alloy 360, 1/2 Hard

Contact Material: Beryllium Copper Alloy 172, HT

Dimensions: Inches

Tolerances On: Lengths: ±.005

Diameters: ±.002

Angles: ±2°



ORDER CODE: XXXX - X - XX - XX - XX - XX - XX - 0

BASIC PART #

SPECIFY SHELL FINISH:

01 200 μ" TIN/LEAD OVER NICKEL

◆ 80 200 μ" TIN OVER NICKEL (RoHS)

◆ 15 10 μ" GOLD OVER NICKEL (RoHS)

SPECIFY CONTACT FINISH:

01 200 μ" TIN/LEAD OVER NICKEL

◆ 80 200 μ" TIN OVER NICKEL (RoHS)

◆ 27 30 μ" GOLD OVER NICKEL (RoHS)

SELECT CONTACT:

#15 CONTACT (DATA ON PAGE 254)

(For alternate contact choices, see group K on page 248)

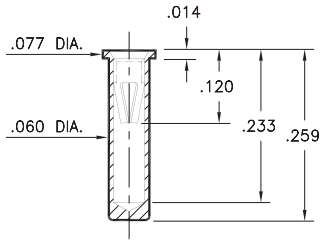
PIN RECEPTACLES

FOR .022" - .032" DIAMETER PINS
RECEPTACLES ON TAPE & REEL PACKAGING

0295

0295-0-57-XX-06-XX-10-0

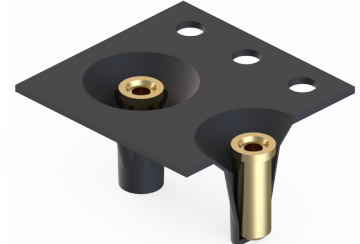
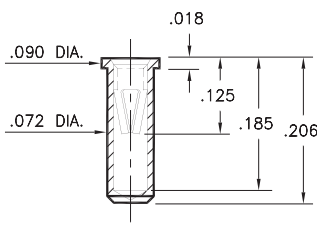
Solder mount in .063 min. mounting hole
12mm wide X 8mm pitch carrier tape:
1,000 parts per 13" reel.



0294

0294-0-57-XX-06-XX-10-0

Solder mount in .076 min. mounting hole
12mm wide X 8mm pitch carrier tape:
1,400 parts per 13" reel.



SPECIFICATIONS:

Shell Material: Brass Alloy 360, 1/2 Hard

Contact Material: Beryllium Copper Alloy 172, HT

Dimensions: Inches

Tolerances On: Lengths: ±.005

Diameters: ±.002

Angles: ± 2°



ORDER CODE: XXXX - X - XX - XX - XX - XX - XX - 0

BASIC PART #

SPECIFY SHELL FINISH:

- 01 200 μ" TIN/LEAD OVER NICKEL
- ◆ 80 200 μ" TIN OVER NICKEL (RoHS)
- ◆ 15 10 μ" GOLD OVER NICKEL (RoHS)

SPECIFY CONTACT FINISH:

- 01 200 μ" TIN/LEAD OVER NICKEL
- ◆ 80 200 μ" TIN OVER NICKEL (RoHS)
- ◆ 27 30 μ" GOLD OVER NICKEL (RoHS)

SELECT CONTACT:

#06 CONTACT (DATA ON PAGE 255)

(For alternate contact choices, see group D on page 248)

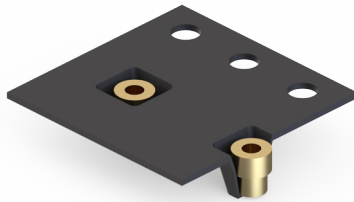
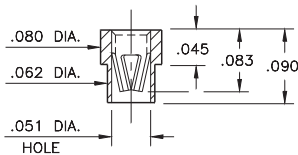
PIN RECEPTACLES

**FOR .022" - .034" DIAMETER PINS AND .025" SQUARE PINS
RECEPTACLES ON TAPE & REEL PACKAGING**

0287

0287-0-57-XX-16-XX-10-0

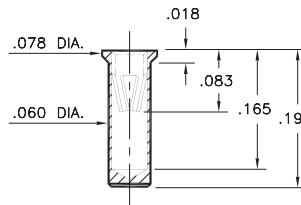
Solder mount in .065 min. mounting hole
8mm wide X 8mm pitch carrier tape:
3,250 parts per 13" reel.



0415

0415-0-57-XX-16-XX-10-0

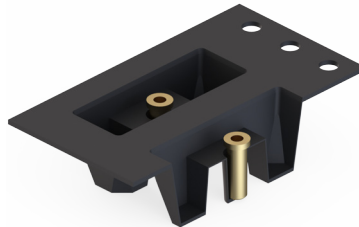
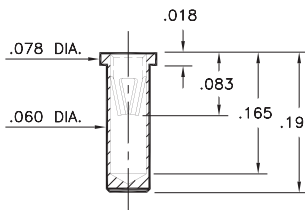
Solder mount in .063 min. mounting hole
24mm wide X 8mm pitch carrier tape:
1,500 parts per 13" reel.



6021

6021-0-57-XX-16-XX-10-0

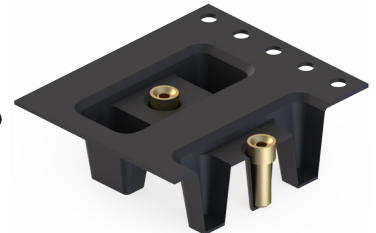
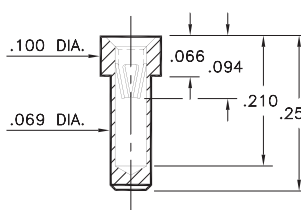
Solder mount in .062 min. mounting hole
24mm wide X 8mm pitch carrier tape:
1,500 parts per 13" reel.



8679

8679-0-57-XX-16-XX-10-0

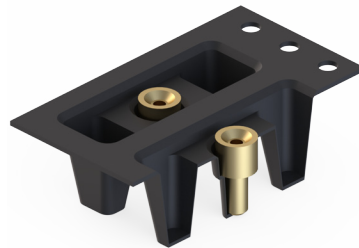
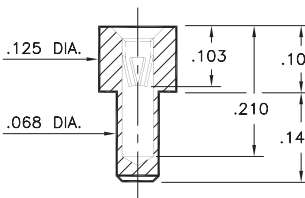
Solder mount in .071 min. mounting hole
24mm wide X 8mm pitch carrier tape:
800 parts per 13" reel.



0284

0284-0-57-XX-16-XX-10-0

Solder mount in .070 min. mounting hole
24mm wide X 8mm pitch carrier tape:
1,200 parts per 13" reel.



SPECIFICATIONS:

Shell Material: Brass Alloy 360, 1/2 Hard

Contact Material: Beryllium Copper Alloy 172, HT

Dimensions: Inches

Tolerances On: Lengths: ±.005

Diameters: ±.002

Angles: ± 2°



ORDER CODE: XXXX - X - XX - XX - XX - XX - XX - 0

BASIC PART #

SPECIFY SHELL FINISH:

- 01 200 μ" TIN/LEAD OVER NICKEL
- ◆ 80 200 μ" TIN OVER NICKEL (RoHS)
- ◆ 15 10 μ" GOLD OVER NICKEL (RoHS)

SPECIFY CONTACT FINISH:

- 01 200 μ" TIN/LEAD OVER NICKEL
- ◆ 80 200 μ" TIN OVER NICKEL (RoHS)
- ◆ 27 30 μ" GOLD OVER NICKEL (RoHS)

SELECT CONTACT:

#16 CONTACT (DATA ON PAGE 256)

(For alternate contact choices, see group D on page 248)

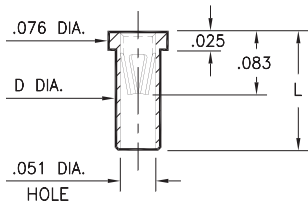
PIN RECEPTACLES

**FOR .025" - .037" DIAMETER PINS AND .025" SQUARE PINS
RECEPTACLES ON TAPE & REEL PACKAGING**

0305

0305-X-57-XX-47-XX-10-0

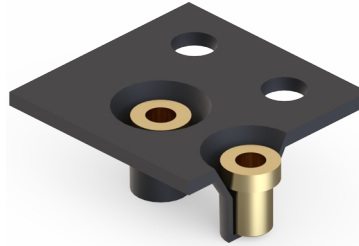
Solder mount in .059/.061 mounting hole
8mm wide or 24mm wide X 8mm pitch
carrier tape: See chart for details.



Basic Part Number	Length L	Dia. D
0305-0	.095	.056
0305-1	.105	.058
0305-2	.155	.058

T&R Packaging

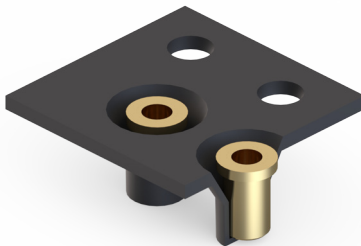
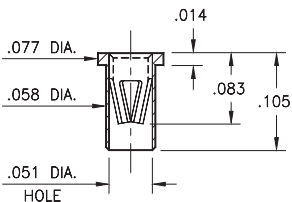
Basic Part Number	Tape Width	Parts per 13" Reel
0305-0	8mm	6,000
0305-1	8mm	6,000
0305-2	24mm	1,500



7305

7305-0-57-XX-47-XX-10-0

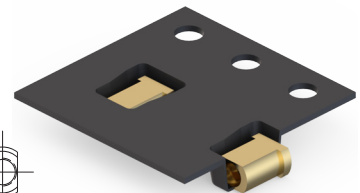
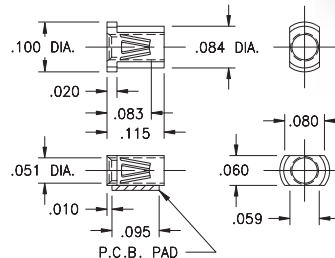
Solder mount in .060 min. mounting hole
8mm wide X 8mm pitch carrier tape:
6,000 parts per 13" reel.



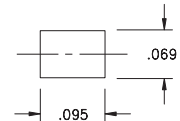
8806

8806-0-58-XX-47-XX-10-0

Surface mount
12mm wide X 8mm pitch carrier tape:
4,000 parts per 13" reel.



P.C.B. Layout



SPECIFICATIONS:

Shell Material: Brass Alloy 360, 1/2 Hard

Contact Material: Beryllium Copper Alloy 172, HT

Dimensions: Inches

Tolerances On: Lengths: ±.005

Diameters: ±.002

Angles: ± 2°



ORDER CODE: XXXX - X - XX - XX - XX - XX - XX - 0

BASIC PART #

SPECIFY SHELL FINISH:

- 01 200 μ" TIN/LEAD OVER NICKEL
- ◆ 80 200 μ" TIN OVER NICKEL (RoHS)
- ◆ 15 10 μ" GOLD OVER NICKEL (RoHS)

SPECIFY CONTACT FINISH:

- 01 200 μ" TIN/LEAD OVER NICKEL
- ◆ 80 200 μ" TIN OVER NICKEL (RoHS)
- ◆ 27 30 μ" GOLD OVER NICKEL (RoHS)

SELECT CONTACT:

#47 CONTACT (DATA ON PAGE 256)

(For alternate contact choices, see group D on page 248)

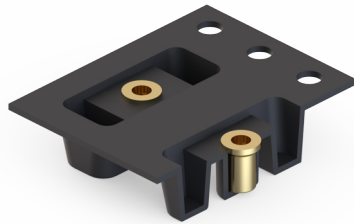
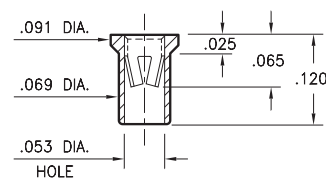
PIN RECEPTACLES

FOR .037" - .043" DIAMETER PINS
RECEPTACLES ON TAPE & REEL PACKAGING

7406

7406-0-57-XX-18-XX-10-0

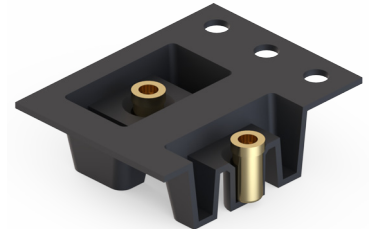
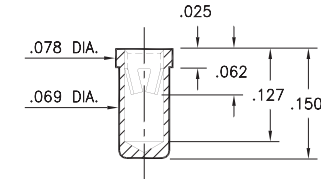
Solder mount in .071 min. mounting hole
16mm wide X 8mm pitch carrier tape:
2,200 parts per 13" reel.



8331

8331-0-57-XX-18-XX-10-0

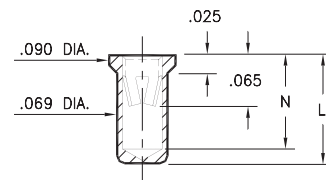
Solder mount in .071 min. mounting hole
16mm wide X 8mm pitch carrier tape:
1,900 parts per 13" reel.



0331/9353

X3XX-0-57-XX-18-XX-10-0

Solder mount in .071 min. mounting hole
24mm wide X 8mm pitch carrier tape:
1,000 parts per 13" reel.

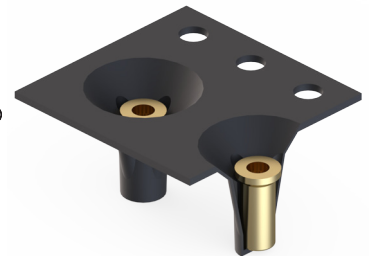
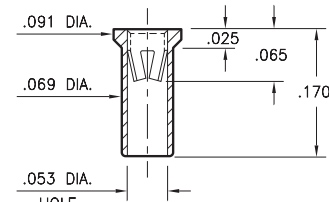


Basic Part Number	Length L	Depth N
0331-0	.150	.127
9353-0	.170	.147

9354

9354-0-57-XX-18-XX-10-0

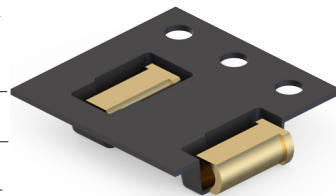
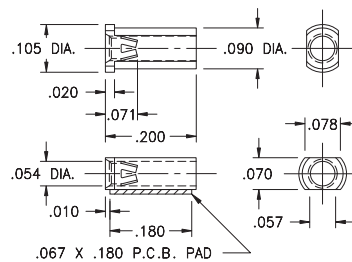
Solder mount in .071 min. mounting hole
12mm wide X 8mm pitch carrier tape:
1,400 parts per 13" reel.



6628

6628-0-58-XX-18-XX-10-0

Surface mount
12mm wide X 8mm pitch carrier tape:
3,700 parts per 13" reel.



SPECIFICATIONS:

Shell Material: Brass Alloy 360, 1/2 Hard

Contact Material: Beryllium Copper Alloy 172, HT

Dimensions: Inches

Tolerances On: Lengths: ±.005

Diameters: ±.002

Angles: ± 2°



ORDER CODE: XXXX - X - XX - XX - XX - XX - XX - 0

BASIC PART #

SPECIFY SHELL FINISH:

- 01 200 μ" TIN/LEAD OVER NICKEL
- ◆ 80 200 μ" TIN OVER NICKEL (RoHS)
- ◆ 15 10 μ" GOLD OVER NICKEL (RoHS)

SPECIFY CONTACT FINISH:

- 01 200 μ" TIN/LEAD OVER NICKEL
- ◆ 80 200 μ" TIN OVER NICKEL (RoHS)
- ◆ 27 30 μ" GOLD OVER NICKEL (RoHS)

SELECT CONTACT:

#18 CONTACT (DATA ON PAGE 257)

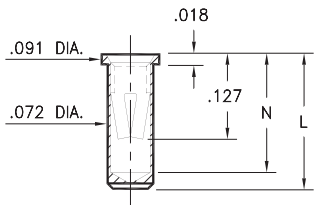
(For alternate contact choices, see group L on page 248)

PIN RECEPTACLES

FOR .032" - .046" DIAMETER PINS RECEPTACLES ON TAPE & REEL PACKAGING

0327/0351/0373 03XX-0-57-XX-34-XX-10-0

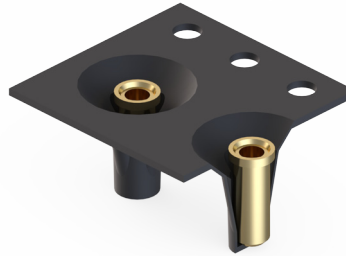
Solder mount in .075 min. mounting hole
12mm wide or 24mm wide X 8mm pitch
carrier tape: See chart for details



Basic Part Number	Length L	Depth N
0327-0	.206	.180
0351-0	.226	.200
0373-0	.270	.241

T&R Packaging

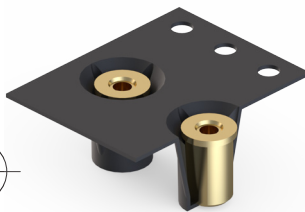
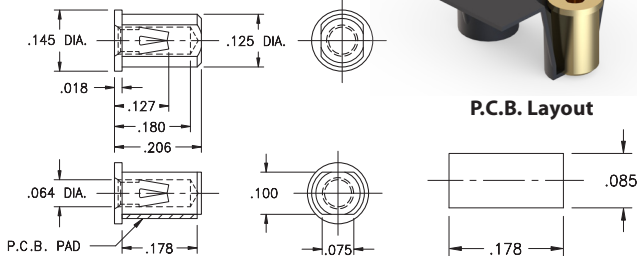
Basic Part Number	Tape Width	Parts per 13" Reel
0327-0	12mm	1,400
0351-0	24mm	1,100
0373-0	24mm	1,000



8206

8206-0-57-XX-34-XX-40-0

Surface mount, board edge
16mm wide X 8mm pitch carrier tape:
Packaged Vertically 1,400 parts per 13" reel.

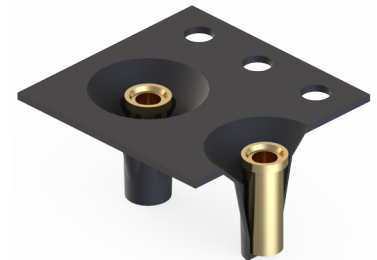
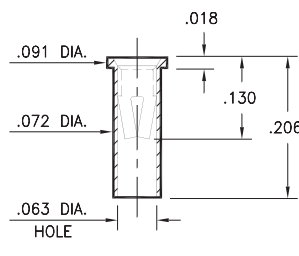


P.C.B. Layout

0312

0312-0-57-XX-34-XX-10-0

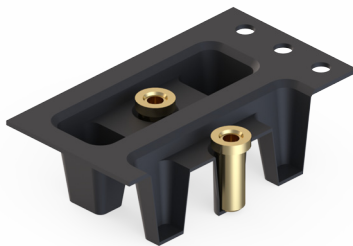
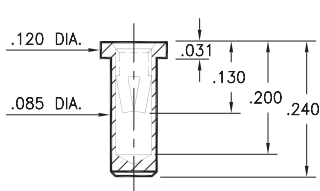
Solder mount in .075 min. mounting hole
12mm wide X 8mm pitch carrier tape:
1,400 parts per 13" reel.



0340

0340-0-57-XX-34-XX-10-0

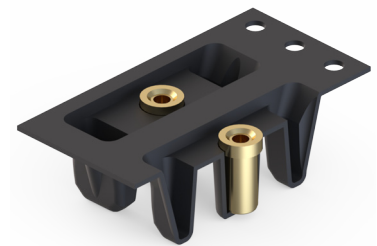
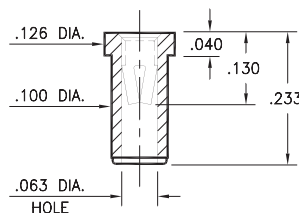
Solder mount in .087 min. mounting hole
24mm wide X 8mm pitch carrier tape:
1,250 parts per 13" reel.



0356

0356-0-57-XX-34-XX-10-0

Solder mount in .102 min. mounting hole
24mm wide X 8mm pitch carrier tape:
1,100 parts per 13" reel.



SPECIFICATIONS:

Shell Material: Brass Alloy 360, 1/2 Hard

Contact Material: Beryllium Copper Alloy 172, HT

Dimensions: Inches

Tolerances On: Lengths: ±.005

Diameters: ±.002

Angles: ± 2°



ORDER CODE: XXXX - X - XX - XX - XX - XX - XX - 0

BASIC PART #

SPECIFY SHELL FINISH:

- 01 200 μ" TIN/LEAD OVER NICKEL
- ◆ 80 200 μ" TIN OVER NICKEL (RoHS)
- ◆ 15 10 μ" GOLD OVER NICKEL (RoHS)

SPECIFY CONTACT FINISH:

- 01 200 μ" TIN/LEAD OVER NICKEL
- ◆ 80 200 μ" TIN OVER NICKEL (RoHS)
- ◆ 27 30 μ" GOLD OVER NICKEL (RoHS)

SELECT CONTACT:

#34 CONTACT (DATA ON PAGE 258)

(For alternate contact choices, see group E on page 248)

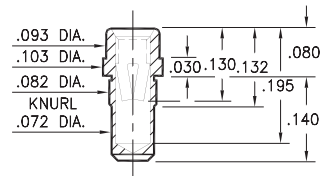
PIN RECEPTACLES

**FOR .032" - .046" DIAMETER PINS
RECEPTACLES ON TAPE & REEL PACKAGING**

0357

0357-0-57-XX-34-XX-10-0

Press-fit in .078 mounting hole
24mm wide X 8mm pitch carrier tape:
1,400 parts per 13" reel.



SPECIFICATIONS:

Shell Material: Brass Alloy 360, 1/2 Hard

Contact Material: Beryllium Copper Alloy 172, HT

Dimensions: Inches

Tolerances On: Lengths: $\pm .005$

Diameters: $\pm .002$

Angles: $\pm 2^\circ$



ORDER CODE: XXXX - X - XX - XX - XX - XX - XX - 0

BASIC PART #

SPECIFY SHELL FINISH:

01 200 μ " TIN/LEAD OVER NICKEL

◆ **80** 200 μ " TIN OVER NICKEL (RoHS)

◆ **15** 10 μ " GOLD OVER NICKEL (RoHS)

SPECIFY CONTACT FINISH:

01 200 μ " TIN/LEAD OVER NICKEL

◆ **80** 200 μ " TIN OVER NICKEL (RoHS)

◆ **27** 30 μ " GOLD OVER NICKEL (RoHS)

SELECT CONTACT:

#34 CONTACT (DATA ON PAGE 258)

(For alternate contact choices, see group E on page 248)

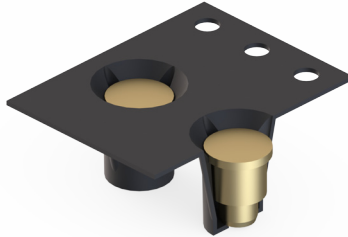
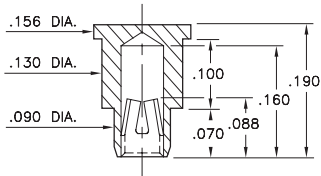
PIN RECEPTACLES

**FOR .040" - .050" DIAMETER PINS
RECEPTACLES ON TAPE & REEL PACKAGING**

9184

9184-0-57-XX-02-XX-40-0

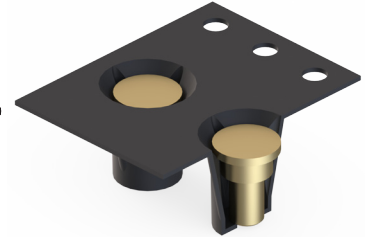
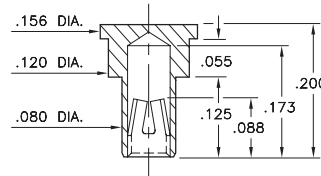
Bottom entry Surface mount, .092 min. plated through-hole. 12mm wide X 8mm pitch carrier tape: 1,500 parts per 13" reel.



9222

9222-2-57-XX-02-XX-40-0

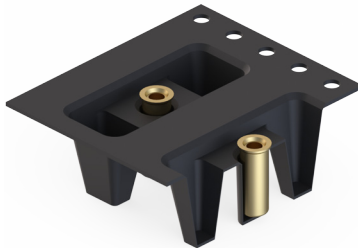
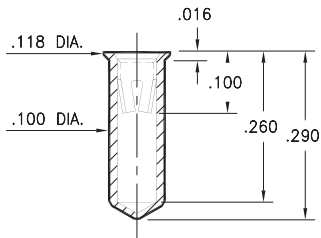
Bottom entry Surface mount, .082 min. plated through-hole. 12mm wide X 8mm pitch carrier tape: 1,500 parts per 13" reel.



0355

0355-0-57-XX-02-XX-10-0

Solder mount in .102 min. mounting hole. 24mm wide X 12mm pitch carrier tape: 700 parts per 13" reel.



SPECIFICATIONS:

Shell Material: Brass Alloy 360, 1/2 Hard

Contact Material: Beryllium Copper Alloy 172, HT

Dimensions: Inches

Tolerances On: Lengths: ±.005

Diameters: ±.002

Angles: ± 2°



ORDER CODE: XXXX - X - XX - XX - XX - XX - XX - 0

BASIC PART #

SPECIFY SHELL FINISH:

- 01 200 μ" TIN/LEAD OVER NICKEL
- ◆ 80 200 μ" TIN OVER NICKEL (RoHS)
- ◆ 15 10 μ" GOLD OVER NICKEL (RoHS)

SPECIFY CONTACT FINISH:

- 01 200 μ" TIN/LEAD OVER NICKEL
- ◆ 80 200 μ" TIN OVER NICKEL (RoHS)
- ◆ 27 30 μ" GOLD OVER NICKEL (RoHS)

SELECT CONTACT:

#02 CONTACT (DATA ON PAGE 259)

(For alternate contact choices, see group F on page 248)

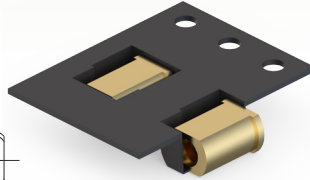
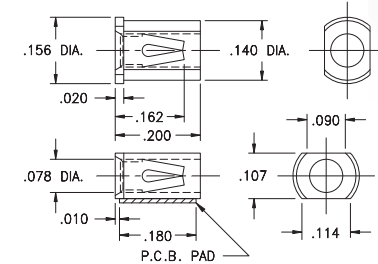
PIN RECEPTACLES

**FOR .040" - .060" DIAMETER PINS (#03 CONTACT)
FOR .048" - .064" DIAMETER PINS (#13 CONTACT)
RECEPTACLES ON TAPE & REEL PACKAGING**

4064

4064-0-58-XX-03-XX-40-0

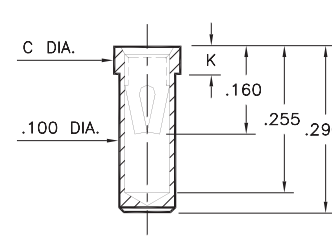
Surface mount
16mm wide X 8mm pitch carrier tape:
2,400 parts per 13" reel.



0435/0436

043X-0-57-XX-03-XX-10-0

Solder mount in .102 min. mounting hole
24mm wide X 8mm pitch carrier tape:
950 parts per 13" reel.

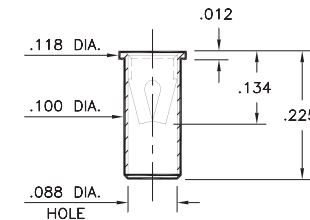


Basic Part Number	Dia. C	Length K
0435-0	.118	.050
0436-0	.125	.070

0372

0372-0-57-XX-13-XX-10-0

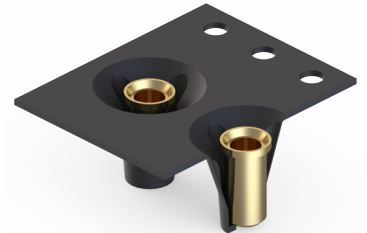
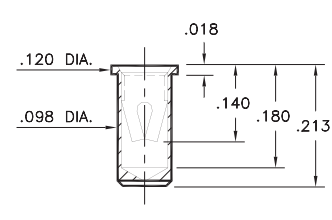
Solder mount in .102 min. mounting hole
24mm wide X 8mm pitch carrier tape:
950 parts per 13" reel.



0364

0364-0-57-XX-13-XX-10-0

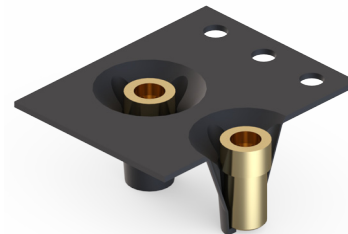
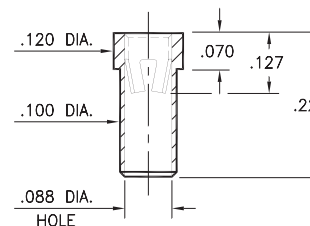
Solder mount in .100 min. mounting hole
16mm wide X 8mm pitch carrier tape:
1,300 parts per 13" reel.



9064

9064-0-57-XX-13-XX-10-0

Solder mount in .102 min. mounting hole
16mm wide X 8mm pitch carrier tape:
1,300 parts per 13" reel.



SPECIFICATIONS:

Shell Material: Brass Alloy 360, 1/2 Hard

Contact Material: Beryllium Copper Alloy 172, HT

Dimensions: Inches

Tolerances On: Lengths: $\pm .005$
Diameters: $\pm .002$
Angles: $\pm 2^\circ$



ORDER CODE: XXXX - X - XX - XX - XX - XX - XX - 0

BASIC PART #

SPECIFY SHELL FINISH:

- 01 200 μ " TIN/LEAD OVER NICKEL
- ◆ 80 200 μ " TIN OVER NICKEL (RoHS)
- ◆ 15 10 μ " GOLD OVER NICKEL (RoHS)

SPECIFY CONTACT FINISH:

- 01 200 μ " TIN/LEAD OVER NICKEL
- ◆ 80 200 μ " TIN OVER NICKEL (RoHS)
- ◆ 27 30 μ " GOLD OVER NICKEL (RoHS)

SELECT CONTACT:

#03 or #13 CONTACT (DATA ON PAGE 259 - 260)

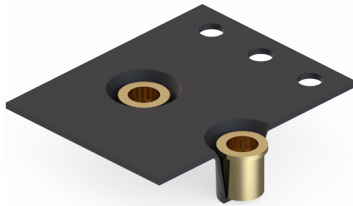
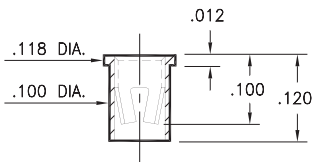
PIN RECEPTACLES

FOR .045" - .065" DIAMETER PINS
RECEPTACLES ON TAPE & REEL PACKAGING

9372

9372-0-57-XX-23-XX-10-0

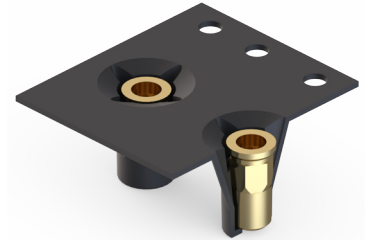
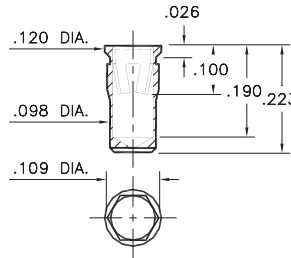
Solder mount in .102 min. mounting hole
16mm wide X 8mm pitch carrier tape:
2,400 parts per 13" reel.



0365

0365-0-57-XX-23-XX-10-0

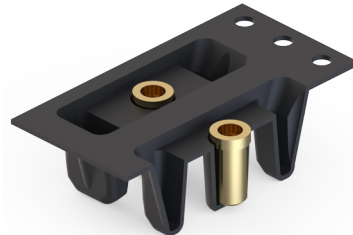
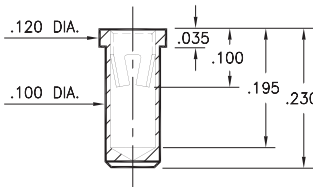
Hex press-fit in .105 plated through-hole
16mm wide X 8mm pitch carrier tape:
1,200 parts per 13" reel.



9401

9401-0-57-XX-23-XX-10-0

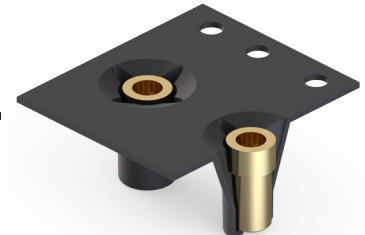
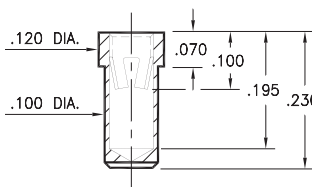
Solder mount in .102 min. mounting hole
24mm wide X 8mm pitch carrier tape:
1,100 parts per 13" reel.



9801

9801-0-57-XX-23-XX-10-0

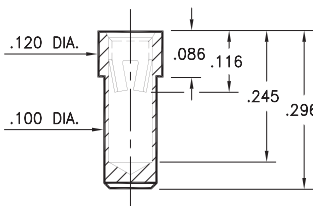
Solder mount in .102 min. mounting hole
16mm wide X 8mm pitch carrier tape:
1,200 parts per 13" reel.



8829

8829-0-57-XX-23-XX-10-0

Solder mount in .102 min. mounting hole
24mm wide X 8mm pitch carrier tape:
950 parts per 13" reel.



SPECIFICATIONS:

Shell Material: Brass Alloy 360, 1/2 Hard

Contact Material: Beryllium Copper Alloy 172, HT

Dimensions: Inches

Tolerances On: Lengths: ±.005

Diameters: ±.002

Angles: ± 2°



ORDER CODE: XXXX - X - XX - XX - XX - XX - XX - 0

BASIC PART #

SPECIFY SHELL FINISH:

- 01 200 μ" TIN/LEAD OVER NICKEL
- ◆ 80 200 μ" TIN OVER NICKEL (RoHS)
- ◆ 15 10 μ" GOLD OVER NICKEL (RoHS)

SPECIFY CONTACT FINISH:

- 01 200 μ" TIN/LEAD OVER NICKEL
- ◆ 80 200 μ" TIN OVER NICKEL (RoHS)
- ◆ 27 30 μ" GOLD OVER NICKEL (RoHS)

SELECT CONTACT:

#23 CONTACT (DATA ON PAGE 260)

(For alternate contact choices, see group G on page 248)

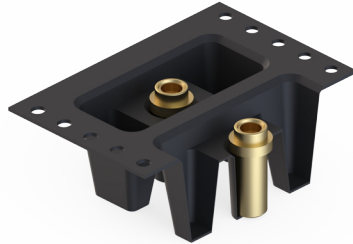
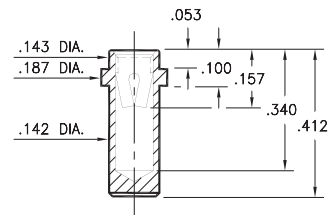
PIN RECEPTACLES

**FOR .065" - .082" DIAMETER PINS (#07 CONTACT)
FOR .084" - .102" DIAMETER PINS (#08 CONTACT)
RECEPTACLES ON TAPE & REEL PACKAGING**

0393

0393-0-57-XX-07-XX-10-0

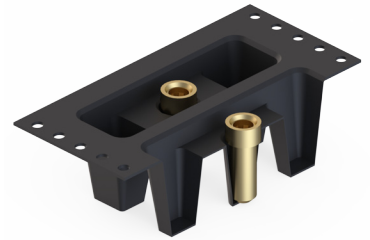
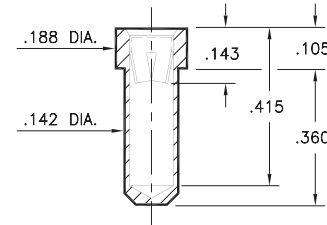
Solder mount in .144 min. mounting hole
32mm wide X 12mm pitch carrier tape:
490 parts per 13" reel.



0390

0390-0-57-XX-08-XX-10-0

Solder mount in .144 min. mounting hole
44mm wide X 12mm pitch carrier tape:
425 parts per 13" reel.



SPECIFICATIONS:

Shell Material: Brass Alloy 360, 1/2 Hard

Contact Material: Beryllium Copper Alloy 172, HT

Dimensions: Inches

Tolerances On: Lengths: ±.005

Diameters: ±.002

Angles: ±2°



ORDER CODE: XXXX - X - XX - XX - XX - XX - XX - 0

BASIC PART #

SPECIFY SHELL FINISH:

01 200 μ" TIN/LEAD OVER NICKEL

◆ **80** 200 μ" TIN OVER NICKEL (RoHS)

◆ **15** 10 μ" GOLD OVER NICKEL (RoHS)

SPECIFY CONTACT FINISH:

01 200 μ" TIN/LEAD OVER NICKEL

◆ **80** 200 μ" TIN OVER NICKEL (RoHS)

◆ **27** 30 μ" GOLD OVER NICKEL (RoHS)

SELECT CONTACT:

#07 or #08 CONTACT (DATA ON PAGE 261 & 262)

(For alternate contact choices, see group H on page 248)

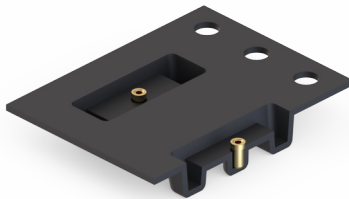
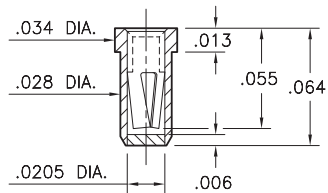
PIN RECEPTACLES

PIN RECEPTACLES WITH ORGANIC FIBRE PLUG® SOLDER BARRIER (SEE SPECIFIC CONTACT RANGE ON PAGES 250, 251 & 253)

4428

4428-0-67-XX-04-XX-10-0

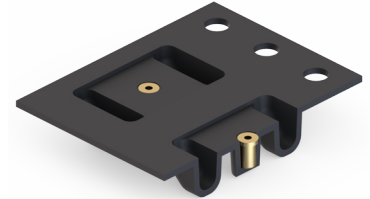
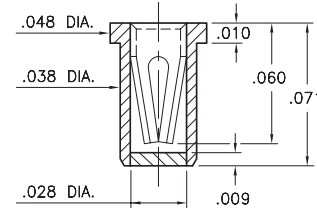
Solder mount in $\varnothing .032$ " max. PTH
#04 Contact for $\varnothing .008$ " - $.013$ " pins
16mm wide X 8mm pitch carrier tape:
3,400 parts per 13" reel.



5359

5359-0-67-XX-10-XX-10-0

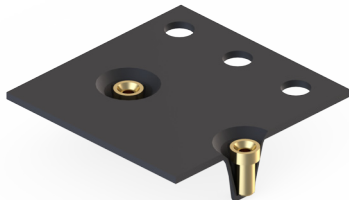
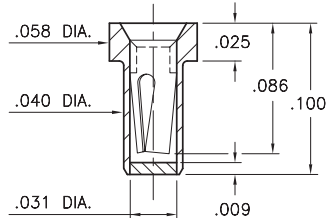
Solder mount in $\varnothing .043$ " $\pm .003$ " PTH
#10 Contact for $\varnothing .012$ " - $.017$ " pins
16mm wide X 8mm pitch carrier tape:
3,000 parts per 13" reel.



0577

0577-0-67-XX-21-XX-10-0

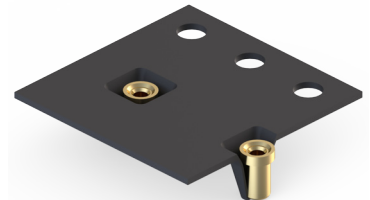
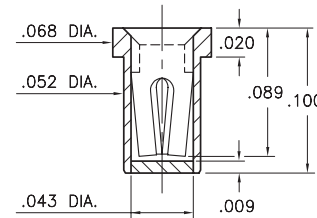
Solder mount in $\varnothing .045$ " $\pm .003$ " PTH
#21 Contact for $\varnothing .015$ " - $.025$ " pins
12mm wide X 8mm pitch carrier tape:
3,000 parts per 13" reel.



4015

4015-0-67-XX-30-XX-10-0

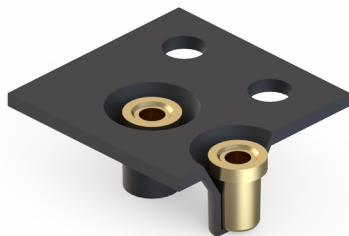
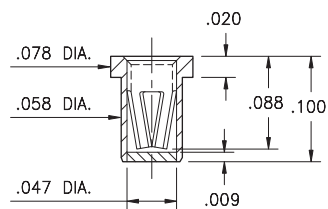
Solder mount in $\varnothing .057$ " $\pm .003$ " PTH
#30 Contact for $\varnothing .015$ " - $.025$ " pins
8mm wide X 8mm pitch carrier tape:
5,500 parts per 13" reel.



0337

0337-0-67-XX-15-XX-10-0

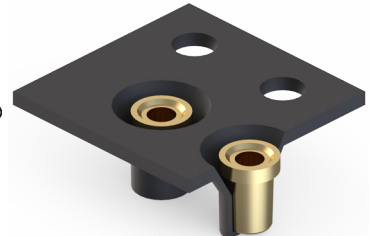
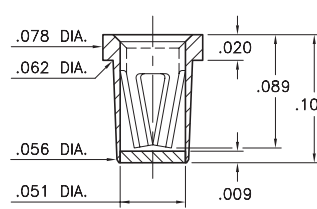
Solder mount in $\varnothing .066$ " $\pm .003$ " PTH
#15 Contact for $\varnothing .020$ " - $.032$ " pins
8mm wide X 8mm pitch carrier tape:
6,000 parts per 13" reel.



4280

4280-0-67-XX-16-XX-10-0

Solder mount in $\varnothing .067$ " $\pm .003$ " PTH
#16 Contact for $\varnothing .022$ " - $.034$ " pins
8mm wide X 8mm pitch carrier tape:
6,000 parts per 13" reel.



SPECIFICATIONS:

Shell Material: Brass Alloy 360, 1/2 Hard

Contact Material: Beryllium Copper Alloy 172, HT

Solder Barrier: Organic Fibre Plug®

Dimensions: Inches

Tolerances On: Lengths: $\pm .005$
Diameters: $\pm .002$
Angles: $\pm 2^\circ$



ORDER CODE: XXXX - 0 - XX - XX - XX - XX - XX - 0

BASIC PART #

SPECIFY PACKAGING:

43 Discrete Receptacles

67 Supplied on 13" Reels

SPECIFY SHELL FINISH:

01 200 μ " TIN/LEAD OVER NICKEL

80 200 μ " TIN OVER NICKEL (RoHS)

CONTACT:

#04, #10, #15, #16, #21 or #30 CONTACT (DATA ON PAGES 250, 251 & 253)

SPECIFY CONTACT FINISH:

27 30 μ " GOLD OVER NICKEL (RoHS)

02 100 μ " TIN/LEAD OVER NICKEL

84 100 μ " TIN OVER NICKEL (RoHS)

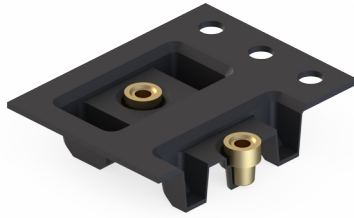
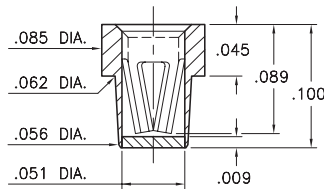
PIN RECEPTACLES

PIN RECEPTACLES WITH ORGANIC FIBRE PLUG® SOLDER BARRIER (SEE SPECIFIC CONTACT RANGE ON PAGES 254 - 262)

5280

5280-0-67-XX-16-XX-40-0

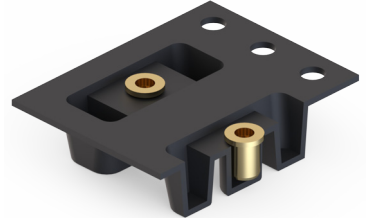
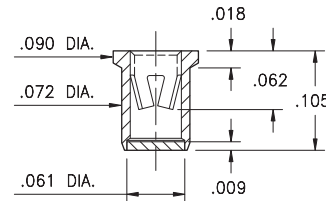
Solder mount in $\varnothing .067" \pm .003"$ PTH
#16 Contact for $\varnothing .022" - .034"$ pins
16mm wide X 8mm pitch carrier tape:
2,200 parts per 13" reel.



0332

0332-0-67-XX-18-XX-10-0

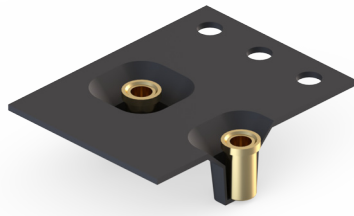
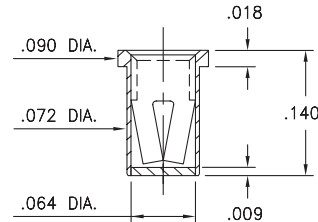
Solder mount in $\varnothing .079" \pm .003"$ PTH
#18 Contact for $\varnothing .037" - .043"$ pins
16mm wide X 8mm pitch carrier tape:
2,200 parts per 13" reel.



0479

0479-0-67-XX-34-XX-10-0

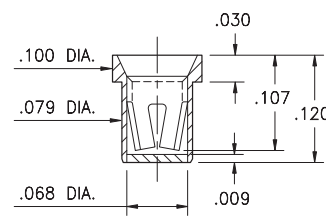
Solder mount in $\varnothing .077" \pm .003"$ PTH
#34 Contact for $\varnothing .032" - .046"$ pins
16mm wide X 8mm pitch carrier tape:
2,200 parts per 13" reel.



0375

0375-0-67-XX-02-XX-10-0

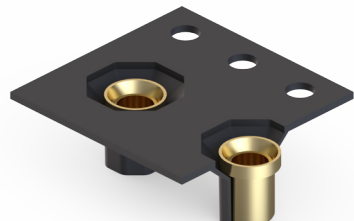
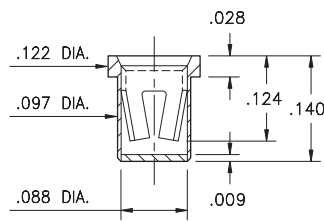
Solder mount in $\varnothing .087" \pm .003"$ PTH
#02 Contact for $\varnothing .040" - .050"$ pins
12mm wide X 8mm pitch carrier tape:
4,500 parts per 13" reel.



0384

0384-0-67-XX-23-XX-10-0

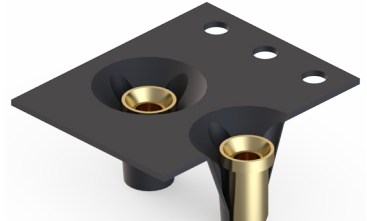
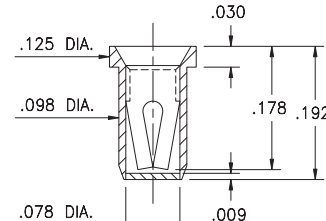
Solder mount in $\varnothing .105" \pm .003"$ PTH
#23 Contact for $\varnothing .045" - .065"$ pins
12mm wide X 8mm pitch carrier tape:
2,000 parts per 13" reel.



0353

0353-0-67-XX-03-XX-10-0

Solder mount in $\varnothing .106" \pm .003"$ PTH
#03 Contact for $\varnothing .040" - .060"$ pins
12mm wide X 8mm pitch carrier tape:
1,300 parts per 13" reel.



SPECIFICATIONS:

Shell Material: Brass Alloy 360, 1/2 Hard

Contact Material: Beryllium Copper Alloy 172, HT

Solder Barrier: Organic Fibre Plug®

Dimensions: Inches

Tolerances On: Lengths: $\pm .005$
Diameters: $\pm .002$
Angles: $\pm 2^\circ$



ORDER CODE: XXXX - 0 - XX - XX - XX - XX - XX - 0

BASIC PART #

SPECIFY PACKAGING:

43 Discrete Receptacles

67 Supplied on 13" Reels

SPECIFY SHELL FINISH:

01 200 μ " TIN/LEAD OVER NICKEL

◆ 80 200 μ " TIN OVER NICKEL (RoHS)

CONTACT:

SPECIFY CONTACT FINISH:

◆ 27 30 μ " GOLD OVER NICKEL (RoHS)

02 100 μ " TIN/LEAD OVER NICKEL

◆ 80 200 μ " TIN OVER NICKEL (RoHS)

◆02, ◆03, ◆16, ◆18, ◆23, or ◆34 CONTACT (DATA ON PAGES 254 - 262)

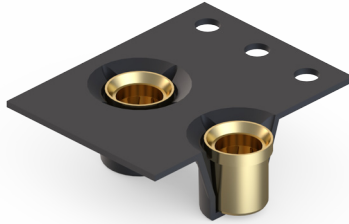
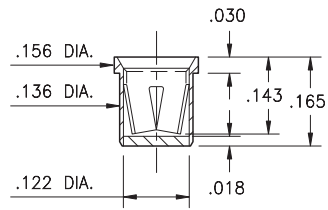
PIN RECEPTACLES

PIN RECEPTACLES WITH ORGANIC FIBRE PLUG® SOLDER BARRIER (SEE SPECIFIC CONTACT RANGE ON PAGES 256 - 262)

0321

0321-0-67-XX-08-XX-10-0

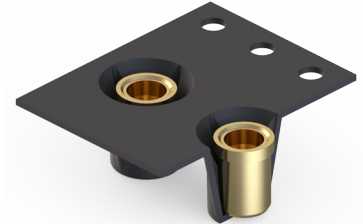
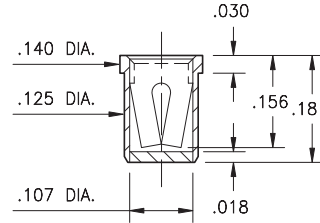
Solder mount in $\varnothing .144" \pm .003"$ PTH
#08 Contact for $\varnothing .084" - .102"$ pins
16mm wide X 8mm pitch carrier tape:
1,700 parts per 13" reel.



0376

0376-0-67-XX-07-XX-10-0

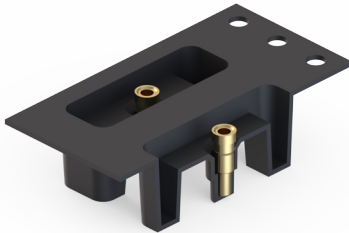
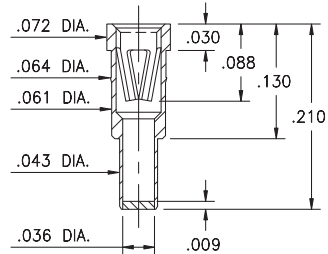
Solder mount in $\varnothing .133" \pm .003"$ PTH
#07 Contact for $\varnothing .065" - .082"$ pins
16mm wide X 8mm pitch carrier tape:
1,500 parts per 13" reel.



3435

3435-0-67-XX-47-XX-04-0

Solder mount in $\varnothing .046" \pm .003"$ PTH
#47 Contact for $\varnothing .025" - .037"$ and $.025"$
square pins. 24mm wide X 8mm pitch
carrier tape: 1,400 parts per 13" reel.



SPECIFICATIONS:

Shell Material: Brass Alloy 360, 1/2 Hard

Contact Material: Beryllium Copper Alloy 172, HT

Solder Barrier: Organic Fibre Plug®

Dimensions: Inches

Tolerances On: Lengths: $\pm .005$
Diameters: $\pm .002$
Angles: $\pm 2^\circ$



ORDER CODE: XXXX - 0 - XX - XX - XX - XX - XX - 0

BASIC PART #

SPECIFY PACKAGING:

43 Discrete Receptacles

67 Supplied on 13" Reels

SPECIFY SHELL FINISH:

01 200 μ " TIN/LEAD OVER NICKEL

◆ 80 200 μ " TIN OVER NICKEL (RoHS)

CONTACT:

#07, #08 or #47 CONTACT (DATA ON PAGES 256-262)

SPECIFY CONTACT FINISH:

◆ 27 30 μ " GOLD OVER NICKEL (RoHS)

02 100 μ " TIN/LEAD OVER NICKEL

◆ 84 100 μ " TIN OVER NICKEL (RoHS)