

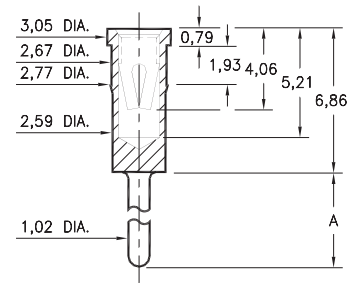
# PIN RECEPTACLES

**FOR 1,02 - 1,52 DIAMETER PINS (#03 CONTACT)**  
**FOR 1,5 - 1,6 DIAMETER PINS (#42 CONTACT)**

## 0433/8433

**X433-0-15-XX-03-XX-04-0**

Press-fit in 2,69 mounting hole

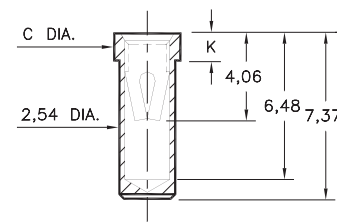


Basic Part Number	Length A
<b>0433-0</b>	3,05
<b>8433-0</b>	8,38

## 0435/0436

**043X-0-15-XX-03-XX-10-0**

Solder mount in 2,59 min. mounting hole  
 Also available on 24mm wide carrier tape:  
 950 parts per 330mm reel  
 Order as: 0435-0-57-XX-03-XX-10-0

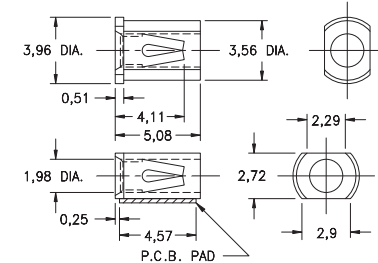


Basic Part Number	Dia. C	Length K
<b>0435-0</b>	3,0	1,27
<b>0436-0</b>	3,18	1,78

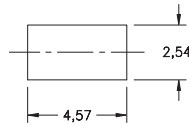
## 4064

**4064-0-18-XX-03-XX-40-0**

Surface mount  
 Also available on 16mm wide carrier tape:  
 2,400 parts per 330mm reel  
 Order as: 4064-0-58-XX-03-XX-40-0



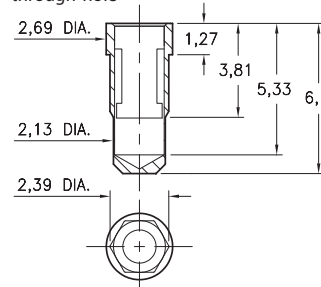
P.C.B. Layout



## 0342

**0342-0-15-XX-42-XX-10-0**

Hex press-fit in 2,29±0,05 plated through-hole

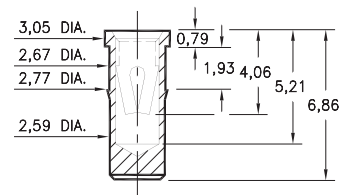


- 0342 receptacle uses Mill-Max's new #42 Contact. This receptacle will accept the Ø1,55 ±0,05 power pins of ¼ brick DC/DC converters.
- #42 contact can be ordered in standard receptacles that use #03 contact; or it can be specified as the spring element inside custom made receptacles.

## 0434

**0434-0-15-XX-03-XX-10-0**

Press-fit in 2,69 mounting hole



### Mechanical Data #42 Contact:

Insertion/Extraction Force with a Ø1,55 (nominal) pin:

First Cycle		2nd & Subsequent Cycles	
Insertion Force	Extraction Force	Insertion Force	Extraction Force
20N	6N	10N	6N

Compliance Test (the "spring back" characteristic of the contact to accept Ø 1,5 small pin after insertion of a Ø1,6 large pin) :

Initial Cycle with Ø1,5 pin		Second Cycle with Ø1,6 pin		Third Cycle with Ø1,5 pin	
Ins. Force	Ext. Force	Ins. Force	Ext. Force	Ins. Force	Ext. Force
18N	6N	22N	7N	3N	2N

(Insertion/Extraction Forces are in Newtons and measured with polished steel gage pins having elliptical shaped tips).

### SPECIFICATIONS:

**Shell Material:** Brass Alloy 360, 1/2 Hard

**Contact Material:** Beryllium Copper Alloy 172, HT

**Dimensions:** Millimeters

**Tolerances On:** Lengths: ±0,13  
 Diameters: ±0,051  
 Angles: ±2°



**ORDER CODE: XXXX - X - 1X - XX - XX - XX - XX - 0**

**BASIC PART #**

**SPECIFY SHELL FINISH:**

- 01 5,08µm TIN/LEAD OVER NICKEL
- ◆ 80 5,08µm TIN OVER NICKEL (RoHS)
- ◆ 15 0,25µm GOLD OVER NICKEL (RoHS)

**SPECIFY CONTACT FINISH:**

- 01 5,08µm TIN/LEAD OVER NICKEL
- ◆ 80 5,08µm TIN OVER NICKEL (RoHS)
- ◆ 27 0,76µm GOLD OVER NICKEL (RoHS)

**SELECT CONTACT:**

**#03 or #42 CONTACT (DATA ON PAGE 259)**

