

10 9 8 7 6 5 4 3 2 1

F

E

D

C

B

A

F

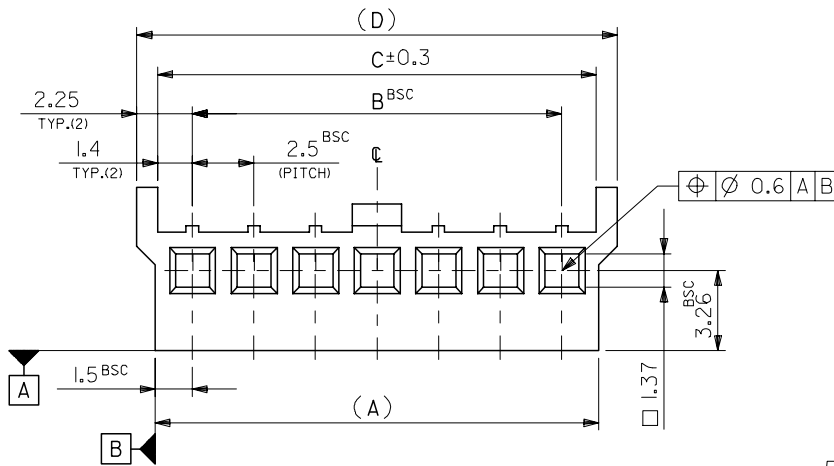
E

D

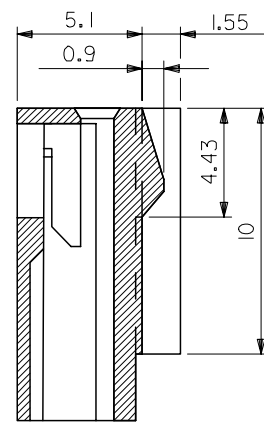
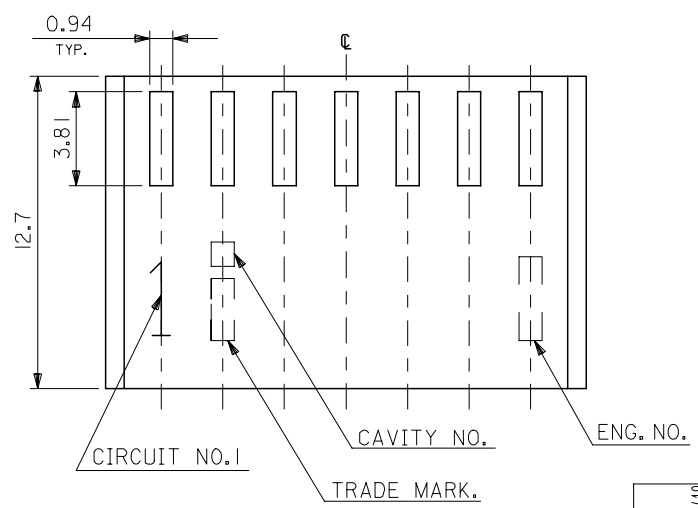
C

B

A



**NOTE**  
FOR USE WITH TERMINAL NO.2759,5159,4809.



32.0	30.3	27.5	30.5	39-01-5120	5507-125	12
29.5	27.8	25.0	28.0	-5110	-115	11
27.0	25.3	22.5	25.5	-5100	-105	10
24.5	22.8	20.0	23.0	-5090	-095	9
22.0	20.3	17.5	20.5	-5080	-085	8
19.5	17.8	15.0	18.0	-5070	-075	7
17.0	15.3	12.5	15.5	-5060	-065	6
14.5	12.8	10.0	13.0	-5050	-055	5
12.0	10.3	7.5	10.5	-5040	-045	4
9.5	7.8	5.0	8.0	39-01-5030	5507-035	3
(D)	C	B	(A)	EDP. NO.	ENG. NO.	CIRCUIT

MATERIAL  
66NYLON.UL94V-0

REVISED EC NO: J2006-3376 DRWN:KSAIT001 2006/07/19 CHKD:MTANAKA 2006/07/19 APPR:NUKITA 2006/07/20	GENERAL TOLERANCES (UNLESS SPECIFIED)		DIMENSION STYLE MM ONLY		SCALE 5:1	DESIGN UNITS METRIC	THIRD ANGLE PROJECTION	
	10 UNDER ±0.2	10 OVER 30 UNDER ±0.25	30 OVER ±0.3	ANGULAR ±3 °	DRAFT WHERE APPLICABLE MUST REMAIN WITHIN DIMENSIONS	DRAWN BY S.MOCHIZUKI 1988/11/01	CHECKED BY M.FUKUSHIMA 1988/11/04	APPROVED BY M.ENOMOTO 1988/11/04
	TITLE K.K. 2.5 PITCH HOUSING			MOLEX INCORPORATED		DOCUMENT NO. SD-5507-N5	SHEET NO. 1 OF 1	
	SEE CHART			THIS DRAWING CONTAINS INFORMATION THAT IS PROPRIETARY TO MOLEX INCORPORATED AND SHOULD NOT BE USED WITHOUT WRITTEN PERMISSION				