

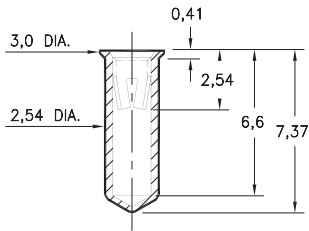
PIN RECEPTACLES

FOR 1,02 - 1,27 DIAMETER PINS (#02 CONTACT)
FOR 1,02 - 1,52 DIAMETER PINS (#03 CONTACT)

0355

0355-0-15-XX-02-XX-10-0

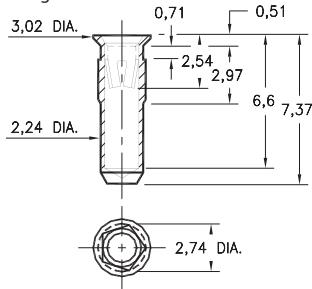
Solder mount in 2,59 min. mounting hole



0354

0354-0-15-XX-02-XX-10-0

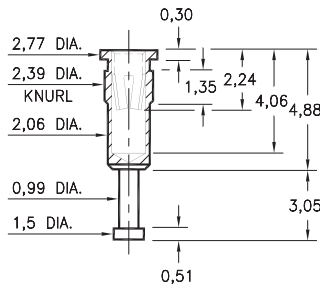
Pentagonal press-fit in 2,64 min. plated through-hole



3490

3490-0-15-XX-02-XX-10-0

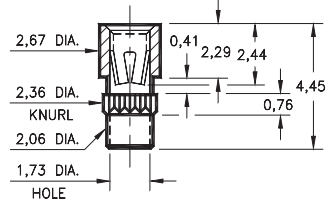
Press-fit in 2,31 mounting hole



3808

3808-0-15-XX-02-XX-10-0

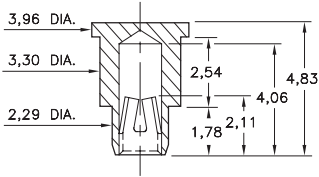
Press-fit in 2,29 mounting hole



9184

9184-0-15-XX-02-XX-40-0

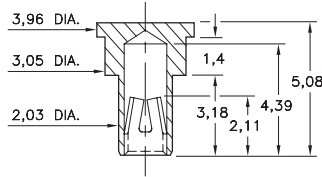
Bottom entry, surface mount
 2,34 min. plated through-hole
 Also available on carrier tape,
 Order as: 9184-0-57-XX-02-XX-40-0



9222

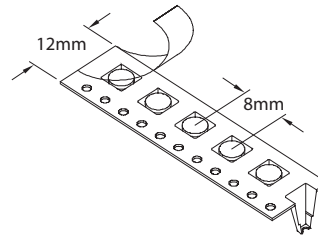
9222-2-15-XX-02-XX-40-0

Bottom entry, surface mount
 2,08 min. plated through-hole
 Also available on carrier tape,
 Order as: 9222-2-57-XX-02-XX-40-0



Carrier tape format for 9184 and 9222.

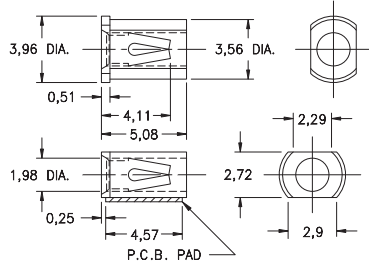
1,500 pieces per 330mm reel



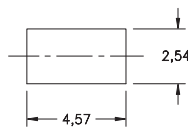
4064

4064-0-18-XX-03-XX-40-0

Surface mount
 Also available on 16mm wide carrier tape:
 2,400 parts per 330mm reel
 Order as: 4064-0-58-XX-03-XX-40-0



P.C.B. Layout



SPECIFICATIONS:

Shell Material: Brass Alloy 360, 1/2 Hard

Contact Material: Beryllium Copper Alloy 172, HT

Dimensions: Millimeters

Tolerances On: Lengths: ± 0,13

Diameters: ± 0,051

Angles: ± 2°



ORDER CODE: XXXX - X - XX - XX - 02 - XX - XX - 0

BASIC PART #

SPECIFY SHELL FINISH:

01 5,08µm TIN/LEAD OVER NICKEL

◆ 80 5,08µm TIN OVER NICKEL (RoHS)

◆ 15 0,25µm GOLD OVER NICKEL (RoHS)

SPECIFY CONTACT FINISH:

01 5,08µm TIN/LEAD OVER NICKEL

◆ 80 5,08µm TIN OVER NICKEL (RoHS)

◆ 27 0,76µm GOLD OVER NICKEL (RoHS)

SELECT CONTACT:

#02 or #03 CONTACT (DATA ON PAGE 259)

(For alternate contact choices, see group F on page 248)

