



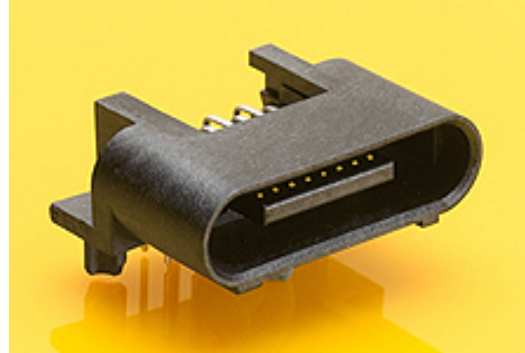
Part Number : [459850442](#)

Product Description : EXTreme LPHPower Plug, Right-Angle, 24 Signal Contacts, Select Gold (Au) Plating, for 2.36mm Thick PC Board, with Guide Pockets and Press-fit Plastic Pegs

Series Number : 45985

Status : Active

Product Category : Board-to-Board Connectors



Documents & Resources

Drawings

[459850442_sd.pdf](#)

[PK-45984-001-001.pdf](#)

3D Models and Design Files

[459850442_stp.zip](#)


[SYM-45985-0441-001.zip](#)

Specifications

[PS-45984-001-001.pdf](#)

Product Environment Compliance

Compliance

GADSL/IMDS	Not Relevant
China RoHS	
EU ELV	Not Relevant
Low-Halogen Status	Low-Halogen per IEC 61249-2-21
REACH SVHC	Not Contained per D(2024)6225-DC (07 Nov 2024)
EU RoHS	Compliant per EU 2015/863

[Multiple Part Product Compliance Statements](#)

- Eu RoHS
- REACH SVHC
- Low-Halogen

[Multiple Part Industry Compliance Documents](#)

- IPC 1752A Class C
- IPC 1752A Class D
- Molex Product Compliance Declaration
- IEC-62474
- chemSHERPA (xml)

EU RoHS Certificate of Compliance

Part Details

General

Status	Active
Category	Board-to-Board Connectors
Series	45985
Description	EXTreme LPHPower Plug, Right-Angle, 24 Signal Contacts, Select Gold (Au) Plating, for 2.36mm Thick PC Board, with Guide Pockes and Press-fit Plastic Pegs
Application	Board-to-Board, Signal
Component Type	PCB Header
Product Name	EXTreme LPHPower
UPC	883906949662

Agency

CSA	LR19980
UL	E29179

Electrical

Current - Maximum per Contact	1.0A
Voltage - Maximum	30V DC (Signal)

Physical

Breakaway	No
Circuits (Loaded)	24
Circuits (maximum)	24
Color - Resin	Black
Durability (mating cycles max)	250
First Mate / Last Break	No

Flammability	94V-0
Glow-Wire Capable	No
Guide to Mating Part	Yes
Keying to Mating Part	None
Lock to Mating Part	None
Material - Metal	High Performance Alloy (HPA)
Material - Plating Mating	Gold
Material - Plating Termination	Tin
Material - Resin	High Temperature Thermoplastic
Net Weight	2.448/g
Number of Rows	2
Orientation	Right Angle
Packaging Type	Tray
PC Tail Length	2.90mm
PCB Locator	Yes
PCB Retention	Yes
PCB Thickness - Recommended	2.36mm
Pitch - Mating Interface	1.27mm
Pitch - Termination Interface	1.27mm
Plating min - Mating	0.762µm
Plating min - Termination	3.810µm
Polarized to Mating Part	Yes
Polarized to PCB	Yes
(p)ower-(s)ignal Configuration	24s - 0p
Shrouded	Fully
Stackable	No
Temperature Range - Operating	-40° to +105°C
Termination Interface Style	Through Hole

Solder Process Data

Max-Duration	20
Lead-Free Process Capability	WAVE
Max-Cycle	3
Max-Temp	260

Mates With / Use With

Mates with Part(s)

Description	Part Number
EXTreme LPHPower Right-Angle PCB Receptacles	<u>45984</u>
1.27mm Pitch EXTreme LPHPower Vertical PCB Receptacles	<u>46113</u>

This document was generated on Feb 13, 2025