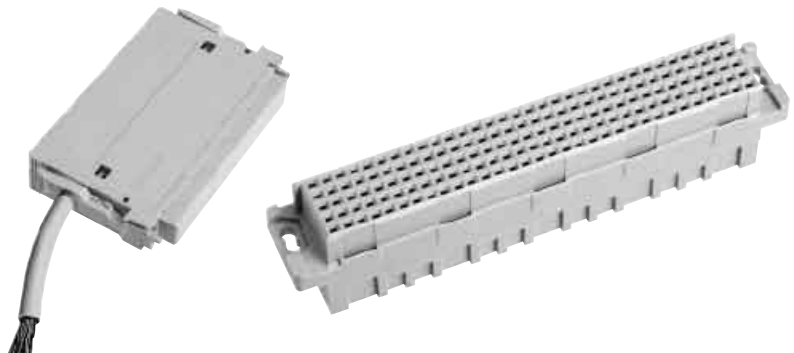


Number of contacts

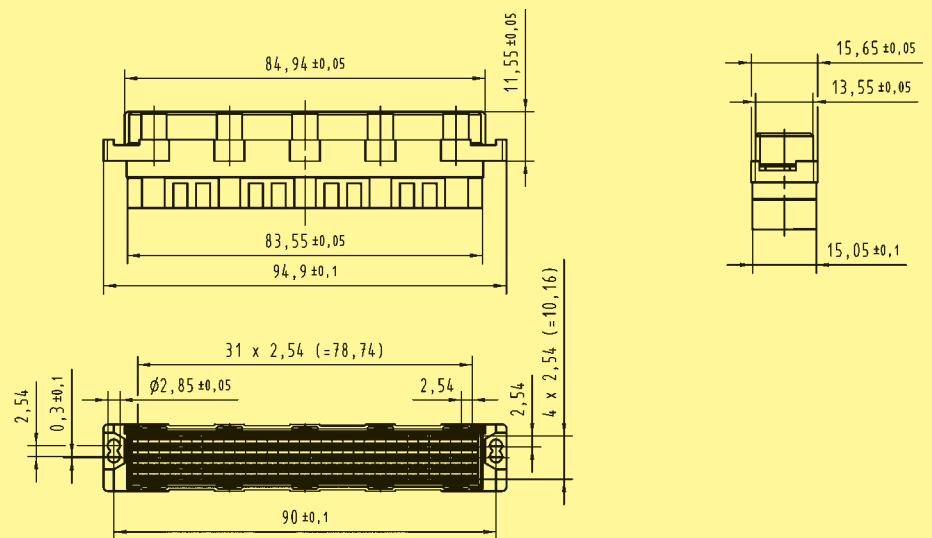
max. 160



Female connectors

Identification	Number of contacts	Contact-arrangement	Suitable for	Part No.
Female connector for crimp contacts order contacts separately fits into shell housing C see chapter 20	160		har-bus® 64 shroud	02 05 000 0004
	160		Male connector type R with 5 rows	02 05 000 0005
	160		Male connector type C with 5 rows	02 05 000 0003

Dimensions



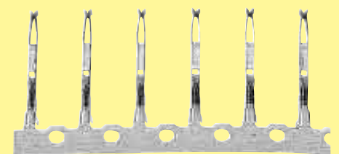
har-bus 64

Identification	Part No.	Performance levels according to IEC 61076-4-113. Explanation chapter 00
Female crimp contacts har-bus® 64	2	1
Bandoliered contacts (approx. 5,000 pieces)	02 05 000 2511	02 05 000 1511
Bandoliered contacts (approx. 500 pieces)	02 05 000 2512	02 05 000 1512
Individual contacts ¹⁾	02 05 000 2513	02 05 000 1513

Wire gauge mm ²	AWG	Insulation ϕ mm
0.09 - 0.5	28 - 20	0.7 - 1.5

3.5 + 0.5 mm of insulation is stripped
Insertion, removal and crimping tools see chapter 30

Bandoliered contacts



Individual contacts



¹⁾ Packaging unit 1,000 pieces