

Actuator

02-
619.011



<https://eao.com/p/02-619.011>

Your product:



02-619.011 Actuator

FRONT

Front bezel colour: Black

Front bezel material: Plastic

MOUNTING

Design: flush

Mounting cut-out: 21.2 mm x 29.2 mm

OPERATING-/INDICATION PART

Lens illumination: illuminative

ELECTRICAL CHARACTERISTICS

Electric strength: 2500 VAC, 50 Hz, 1 minute, as per IEC 60947-5-1 between all terminals and earth

Contacts: 2 C

Standards: The switches comply with the "Standards for low-voltage switching devices" EN IEC 60947-5-1

Rated insulation voltage U_i : 400 VAC/440 VDC according to IEC 60947-5-1

Switching voltage and switching current:

according to UL	
250 VAC, 10 A	
according to IEC 60947-5-1	
AC-12: 400 V, 10 A	AC-15: 400 V, 6 A
AC-15: 250 V, 8 A	DC-13: 110 V, 0.4 A
DC-13: 60 V, 1 A	DC-13: 24 V, 3 A

Thermal current I_{th} : 10 A

MECHANICAL CHARACTERISTIC

Switching system:

Snap-action switching element

Terminal:	Screw terminal
Operating Travel:	ca. 5 mm
Switching system:	1 or 2 self-cleaning snap action switching elements. 1 or 2 double-throw contacts.
Weight:	0.055 kg
Mechanical lifetime:	1 Mio. cycles of operation
Switching action:	Maintained
Tightening torque:	Fixing nut max. 0.2 Nm, Screw terminal 0.8 Nm
Operating force:	6 ... 12 N
Contact material:	Silver

AMBIENT CONDITION

Operating temperature:	- 25 °C ... + 55 °C, mounted as a block, make sure the heat can escape freely
Vibration resistance:	10 g at 10 Hz...2000 Hz, amplitude 1.0 mm, according to IEC 60068-2-6
Shock resistance:	15 g for 11 ms, according to IEC 60068-2-27
IP Protection:	IP40 front side, IP65 with spray cover, according to IEC 60529

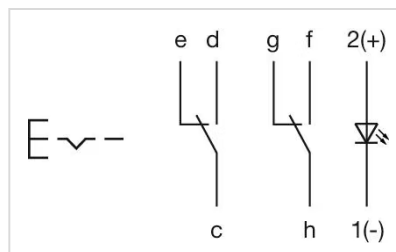
CERTIFICATE

Approbations:	CB (IEC 60947-5-1), CENELEC CCA-NTR (EN 60947-5-1), CSA, DNV, SEV, UL
Conformities:	CE, UKCA, 2011 / 65 / EC (RoHS), 2014 / 35 / EU (LVD)

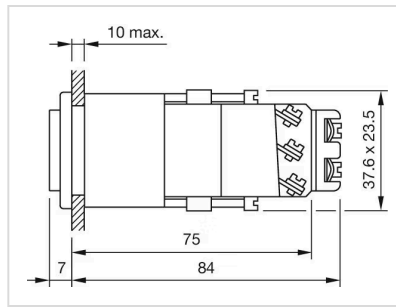
OTHER

Housing colour:	Black
Short Description:	Actuator, 21.2 mm x 29.2 mm, illuminative, Black, Plastic, 2 C, Maintained, Screw terminal
Housing material:	Plastic

Wiring diagrams:



Dimension drawings:



Mounting cut-outs:

