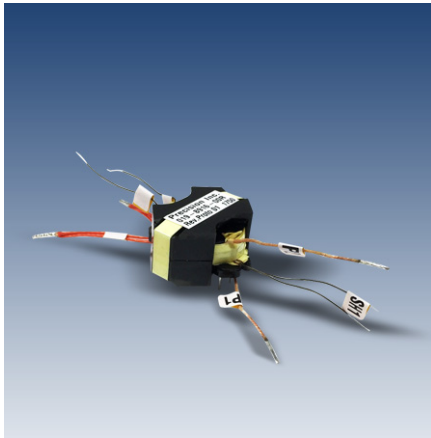




019-8916-00R

Features:

- 45W Flyback Transformer
- Frequency: 180 - 280 KHz, 20V / 2.25A
- RoHS Compliant



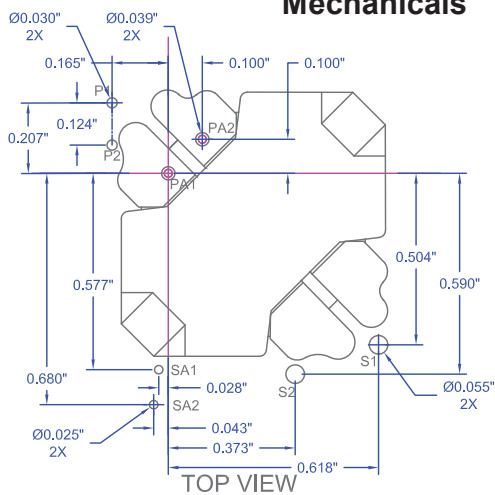
Electrical

Electrical Specifications @ 25 °C unless noted otherwise

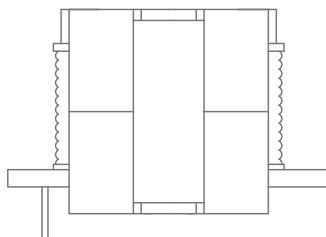
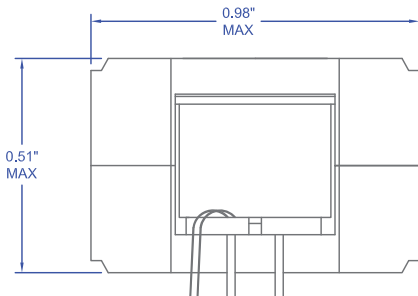
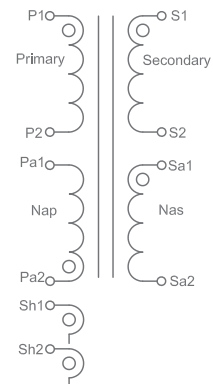
Parameters	Value	Notes
Inductance (µH)	104 - 127	P1 - P2 @ 0.1VAC, 200kHz
Leakage Inductance (µH)	2.6 Max	P1 - P2 Short S1 - S2 @ 0.1VAC, 200kHz
DC Resistance (Ω) @ 20 °C	0.147 Max	P1 - P2
DC Resistance (Ω) @ 20 °C	0.014 Max	S1 - S2
DC Resistance (Ω) @ 20 °C	0.168 Max	Pa1 - Pa2 & Sa1 - Sa2
Dielectric	1500VAC, 60Hz, 1mA, 1s	P1 - S1
Dielectric	500VAC, 60Hz, 1mA, 1s	P1, S1 - CORE

Physical Dimensions

Mechanicals



Schematics



- Specifications subject to change without notice.
- Pin 1 indicated by dot on label or parts.
- Label shown is only for illustrative purposes only.
- Reference board layout only.