



Part Number : [936010363](#)

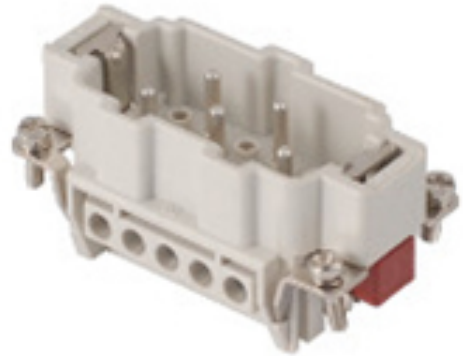
Product Description : GWconnect Screw Terminal Insert, Male, 5-Pole, 16A, Silver (Ag) Plated Contacts, Numbered 1-10, with Wire Protection, Size 10B «57x27»

Series Number : 93601

Status : Active

Product Category : Heavy-Duty Connectors

Engineering Number : 7503.6131.0



Product Environment Compliance

Compliance

GADSL/IMDS	Not Relevant
China RoHS	
EU ELV	Not Relevant
Low-Halogen Status	Not Reviewed per IEC 61249-2-21
REACH SVHC	Not Contained per ED/71/2019 (16 July 2019)
EU RoHS	Compliant per EU 2015/863

Multiple Part Product Compliance Statements

- Eu RoHS
- REACH SVHC
- Low-Halogen

Multiple Part Industry Compliance Documents

- IPC 1752A Class C
- IPC 1752A Class D
- Molex Product Compliance Declaration
- IEC-62474
- chemSHERPA (xml)

EU RoHS Certificate of Compliance

Part Details

General

Status	Active
--------	--------

Category	Heavy-Duty Connectors
Series	93601
Description	GWconnect Screw Terminal Insert, Male, 5-Pole, 16A, Silver (Ag) Plated Contacts, Numbered 1-10, with Wire Protection, Size 10B «57x27»
Component Type	Inserts - Screw Terminal Block
Insert Series	S-EHV
Product Name	GWconnect
Standard	CSA C22.2 NO. 182.3, EN 60664-1, EN 61984, UL 1977
UPC	887191886213

Agency

CSA	256883
UL	E249674

Electrical

Current - Maximum per Contact	16.0A
Voltage - Maximum	830V

Physical

Component Size	10B «57X27»
Durability (mating cycles max)	500
Gender	Male
Insert Color	Grey
Material - Contact	Copper Alloy
Material - Insert	Polycarbonate
Material - Plating	Silver
Net Weight	53.000/g
Number of Rows	2
Packaging Type	Bag
Polarized to Mating Part	Yes
Poles	5
Stripping Length	7.00mm
Temperature Range - Operating	-40° to +125°C

Tightening Test Torque	0.50 Nm
Wire Size (AWG)	14-20
Wire Size mm ²	0.50-2.50

Mates With / Use With

Mates with Part(s)

Description	Part Number
GWconnect Screw Terminal Insert, Female, 5-Pole, 16A, Silver (Ag) Plated Contacts, Numbered 1-10, with Wire Protection, Size 10B «57x27»	<u>936010360</u>

Use with Part(s)

Description	Part Number
Use With	Size 10B «57x27» Hoods and Housings
