



DEUTSCH

TE Internal #: ZPF000000000000345

Socket Contact, Gold, 115 VAC, 115 VDC, Spring Contact

Retention, Size 20 Contact Size, Discrete Wire, 24 – 20 AWG Wire

Size, .25 – .6 mm² Wire Size[View on TE.com >](#)

Connectors > Contacts > Connector Contacts

Contact Type: **Socket**Contact Mating Area Plating Material: **Gold**Wire Contact Termination Area Plating Material: **Gold**Operating Voltage: **115 VDC****Features****Product Type Features**

Sealable	Yes
----------	-----

Configuration Features

Compatible With Wire & Cable Type	Discrete Wire
-----------------------------------	---------------

Electrical Characteristics

Operating Voltage	115 VDC
-------------------	---------

Contact Features

Barrel Type	Closed
-------------	--------

Contact Type	Socket
--------------	--------

Contact Mating Area Plating Material	Gold
--------------------------------------	------

Wire Contact Termination Area Plating Material	Gold
--	------

Contact Retention Within Housing	With
----------------------------------	------

Contact Size	Size 20
--------------	---------

Contact Base Material	Copper Alloy
-----------------------	--------------

Contact Current Rating (Max)	7.5 A
------------------------------	-------

Termination Features

Termination Method to Wire & Cable	Crimp
------------------------------------	-------

Product Terminates To	Wire & Cable
-----------------------	--------------

Mechanical Attachment



Contact Retention Type Within Housing	Spring
---------------------------------------	--------

Dimensions

Wire Size	.25 – .6 mm ²
-----------	--------------------------

Usage Conditions

Operating Temperature Range	-65 – 200 °C[-85 – 392 °F]
-----------------------------	----------------------------

Operation/Application

Circuit Application	Power, Signal & High Speed Data
---------------------	---------------------------------

Product Compliance

[For compliance documentation, visit the product page on TE.com>](#)

EU RoHS Directive 2011/65/EU	Compliant with Exemptions
EU ELV Directive 2000/53/EC	Out of Scope
China RoHS 2 Directive MIIT Order No 32, 2016	Restricted Materials Above Threshold
EU REACH Regulation (EC) No. 1907/2006	Current ECHA Candidate List: JUNE 2024 (241) Candidate List Declared Against: JAN 2024 (240) SVHC > Threshold: Pb (1.2% in alloy) Article Safe Usage Statements: Do not eat, drink or smoke when using this product. Wash thoroughly after handling. Recycle if possible and dispose of the article by following all applicable governmental regulations relevant to your geographic location.
Halogen Content	Low Halogen - Br, Cl, F, I < 900 ppm per homogenous material. Also BFR/CFR/PVC Free
Solder Process Capability	Not reviewed for solder process capability

Product Compliance Disclaimer

This information is provided based on reasonable inquiry of our suppliers and represents our current actual knowledge based on the information they provided. This information is subject to change. The part numbers that TE has identified as EU RoHS compliant have a maximum concentration of 0.1% by weight in homogenous materials for lead, hexavalent chromium, mercury, PBB, PBDE, DBP, BBP, DEHP, DIBP, and 0.01% for cadmium, or qualify for an exemption to these limits as defined in the Annexes of Directive 2011/65/EU (RoHS2). Finished electrical and electronic equipment products will be CE marked as required by Directive 2011/65/EU. Components may not be CE marked. Additionally, the part numbers that TE has identified as EU ELV compliant have a maximum concentration of 0.1% by weight in homogenous materials for lead, hexavalent chromium, and mercury, and 0.01% for cadmium, or qualify for an exemption to these limits as defined in the Annexes of Directive 2000/53/EC (ELV). Regarding the REACH Regulation, the information TE provides on SVHC in articles for this part number is based on the latest European Chemicals Agency (ECHA) 'Guidance on requirements for substances in articles' posted at this URL: <https://echa.europa.eu/guidance-documents/guidance-on-reach>

Compatible Parts



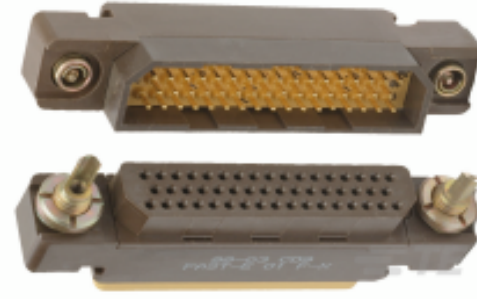
Customers Also Bought



TE Part #12333-20
CONT SOC ASSY



TE Part #324056
TERMINAL,T-N R 1/0 1/4



TE Part #ZPF00000000017864
FAST-E 01 F-X-A 00 B



TE Part #ZPF00000000015067
DM 5623-37-37 PP



TE Part #ZPF00000000020792
SRDJ ME 3



TE Part #A461153001
55A1821-22-2/6-9CK0300



TE Part #006-0937-20A
CONT PIN



TE Part #CQ23433001
55A0811-18-9CK0300



TE Part #Y78106-2461PSNV003
HERM RECP



TE Part #ZPF00000000015872
DTP 07-20-41 K